

## DECORATIVE CEILING MOUNTING

CEWOOD Decorative / Acoustic panels for indoor use are made from high-quality wood wool and cement. The fireproof material has great acoustic and thermal insulation capacities, and is perfectly suitable for the widest range of interior solutions.

### Benefits

The panels are suitable for indoors temperature 10-30 °C with the relative humidity up to 85%. The panels are very durable, so they are the right choice for premises where there is need for regular access to the communications' systems behind the decorative ceiling.

**Ecology** – the material is produced in a nature-friendly way

**Health** – provides a human-friendly, favourable environment

**Handiness** – easy to transport and assemble

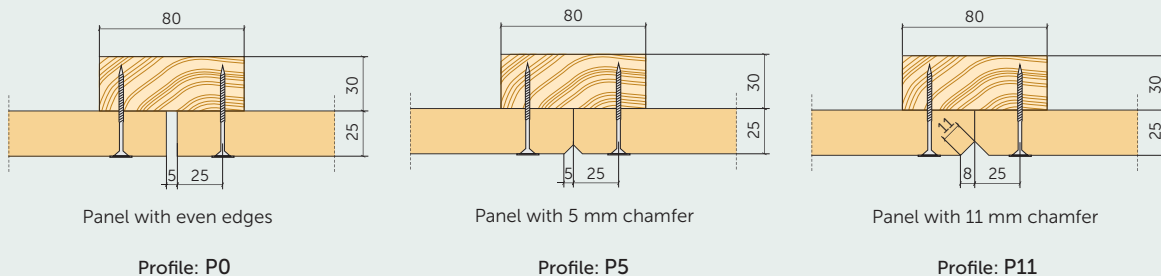
**Insulation** – excellent insulation properties

**Acoustics** – excellent sound insulating and absorbing properties

### Technical data

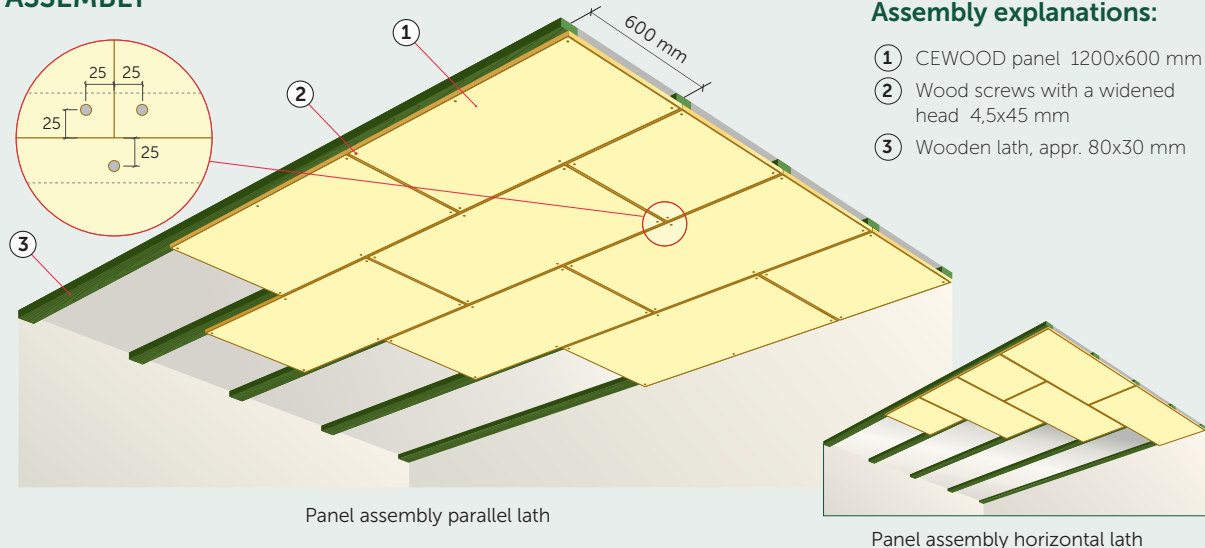
Wood wool width:	1,0 and 1,5 mm
Panel thickness:	25 mm, soon available – 15, 35, 50 mm
Size:	2400x600 mm, 1200x600 mm, 600x600 mm. Other sizes – upon request
Weight:	10,5–11,5 kg/m <sup>2</sup>
Thermal conductivity:	$\lambda = 0,66 \text{ W/m}\cdot\text{K}$
Fire safety class:	B-s1, d0
Colours:	natural, white, black, grey, or painted according to RAL colour chart.

### Profiles



## DECORATIVE CEILING MOUNTING

### ASSEMBLY



### Assembly explanations:

- ① CEWOOD panel 1200x600 mm
- ② Wood screws with a widened head 4,5x45 mm
- ③ Wooden lath, appr. 80x30 mm

### Important

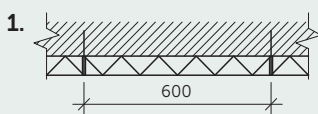
The panels can be fixed to wooden laths (80x30 mm) and metal (CD) profiles or other construction providing strength and load-bearing capacity.

The assembling is carried out using appropriate screws, size 4,5x45 mm (self-cutting screws for CD profiles, wood screws for wooden constructions).

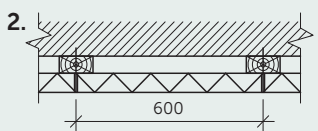
The construction steps are 600 mm, according to the panel width. The mounting should be carried out starting from the middle of room, gradually moving to the sides.

The screw mounting steps are >600 mm. In the corners the mounting should be 35 mm from the side of the panel.

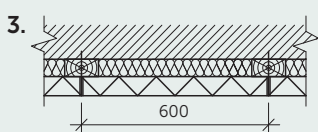
### Variants of assembly



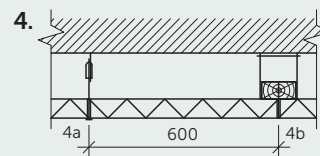
1. The panels are assembled to the ceiling or walls. Assembling to concrete or stone walls is done with plug nails (6 pcs/m<sup>2</sup>), to wood – wood screws with widened head or washer.



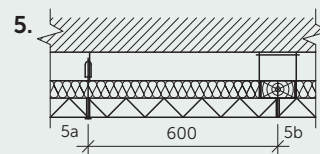
2. A wooden lathing (appr. 80x30 mm) or metal (CD) profile is constructed on the ceiling or wall, to which the CEWOOD panels are assembled.



3. 3rd variant is the same as 2nd, but a layer of mineral wool is inserted between the laths above the panels.



4. A hanged ceiling construction (4a; 5a) or laths construction is attached to the ceiling with the „quick“ suspension, then the CEWOOD panels are assembled.



5. 5th variant is the same as 4th, but a layer of mineral wool is inserted over the CEWOOD panels.