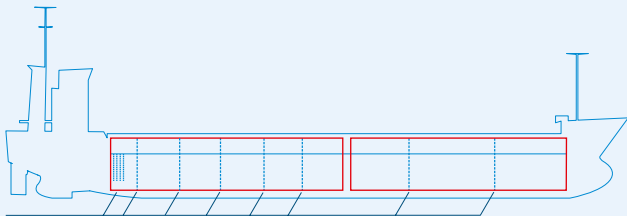
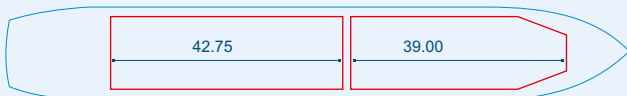


MV KETHI



Two removable tweendeck/bulkheads, hold 1 and/or hold 2
 Tween deck: 2 pcs, strength 3.4 mt/sqm
 Strength hatchcovers: 1.75 mt / sqm
 Strength tanktop: 14.7 mt / sqm



Capacities stated in this list are based on averages.
 Particulars believed to be correct but not guaranteed.



Built:	2002
Shipyard:	Bodewes Shipyard B.V. Hoogezand, the Netherlands
Call sign:	9HA5167
IMO No:	9263552
Type:	Multipurpose Dry Cargo and Container Carrier
Flag:	Malta
Ice class:	1A
DWAT:	8370 mt
GT:	4996 mt
NT:	2597 mt
Length over all:	118.55 m
Breadth over all:	15.20 m
Moulded depth:	9.85 m
Draft:	7.34 m
2 Hatches (L x W):	39.00 x 12.65 m 42.75 x 12.65 m
2 Holds (L x W x H):	39.00 x 12.65 x 9.45 m 42.75 x 12.65 x 9.45 m
Hold Capacity (grain):	332665 cbft / 9420 cbm
TEU:	390
Main Engine:	MaK 8M32c 3840 kW
Speed:	14 knots
Phone on board:	+372 5 196 9011