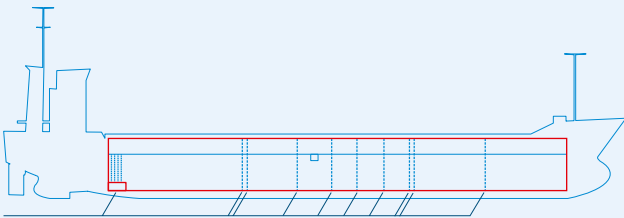
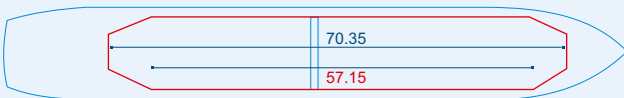


MV KERDA



Two removable bulkheads



Capacities stated in this list are based on averages.
 Particulars believed to be correct but not guaranteed.



Built:	2004
Shipyard:	Rousse Shipyard Ltd Rousse, Bulgaria
Call sign:	V2RC5
IMO No:	9289790
Type:	Multipurpose Dry Cargo Carrier
Flag:	Antigua & Barbuda
Ice class:	1A
DWAT:	4525 mt
GT:	3173
NT:	1725
Length over all:	98.90 m
Breadth over all:	13.80 m
Moulded depth:	7.40 m
Draft:	5.75 m
1 Hatch (L x W):	70.35 x 11.47 m
1 Hold (L x W x H):	70.35 x 11.20 x 8.44 m
Hold Capacity (grain):	225100 cbft / 6375 cbm
TEU:	
Main Engine:	MaK 6M32, 2880 kW
Speed:	12.5 knots
Phone on board:	+372 5387 5264