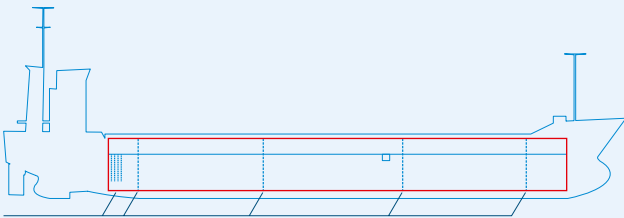
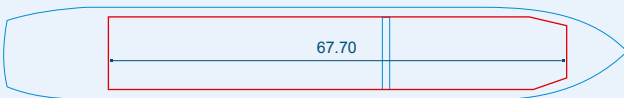


MV KAMELIA



Two removable bulkheads



Capacities stated in this list are based on averages.
 Particulars believed to be correct but not guaranteed.



Built:	1999
Shipyard:	Damen Shipyards B.V. Gorinchem, the Netherlands
Call sign:	9HA3170
IMO No:	9188958
Type:	Multipurpose Dry Cargo and Container Carrier
Flag:	Malta
Ice class:	1C
DWAT:	5049 mt
GT:	2999
NT:	1714
Length over all:	94.99 m
Breadth over all:	13.17 m
Moulded depth:	7.15 m
Draft:	6.19 m
1 Hatch (L x W):	67.70 x 11.10 m
1 Hold (L x W x H):	67.70 x 11.10 x 8.40 m
Hold Capacity (grain):	218780 cbft / 6196 cbm
TEU:	224
Main Engine:	Deutz MWM TBD645L6 2200 kW
Speed:	11 knots
Phone on board:	+372 5 14 0079