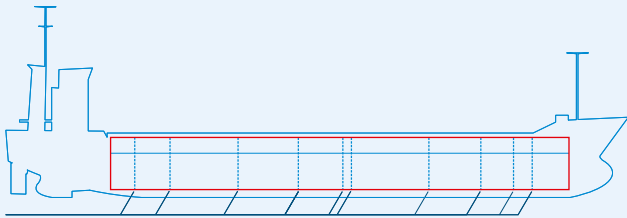
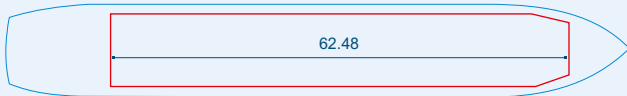


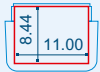
# MV KAJA



Two removable bulkheads



Capacities stated in this list are based on averages.  
 Particulars believed to be correct but not guaranteed.



Built:	1998
Shipyard:	Damen Shipyards Hoogezand, the Netherlands
Call sign:	9HA3670
IMO No:	9130200
Type:	Multipurpose Dry Cargo Carrier
Flag:	Malta
DWAT:	4182 mt
GT:	2844
NT:	1568
Length over all:	89.77 m
Breadth over all:	13.17 m
Moulded depth:	7.15 m
Draft:	5.68 m
1 Hatch (L x W):	62.48 x 11.00 m
1 Hold (L x W x H):	62.48 x 11.00 x 8.44 m
Hold Capacity (grain):	202000 cbft / 5720 cbm
Main Engine:	Deutz KHD SBV 9M628 1800 kW
Speed:	11.5 knots
Phone on board:	+372 53 022 442