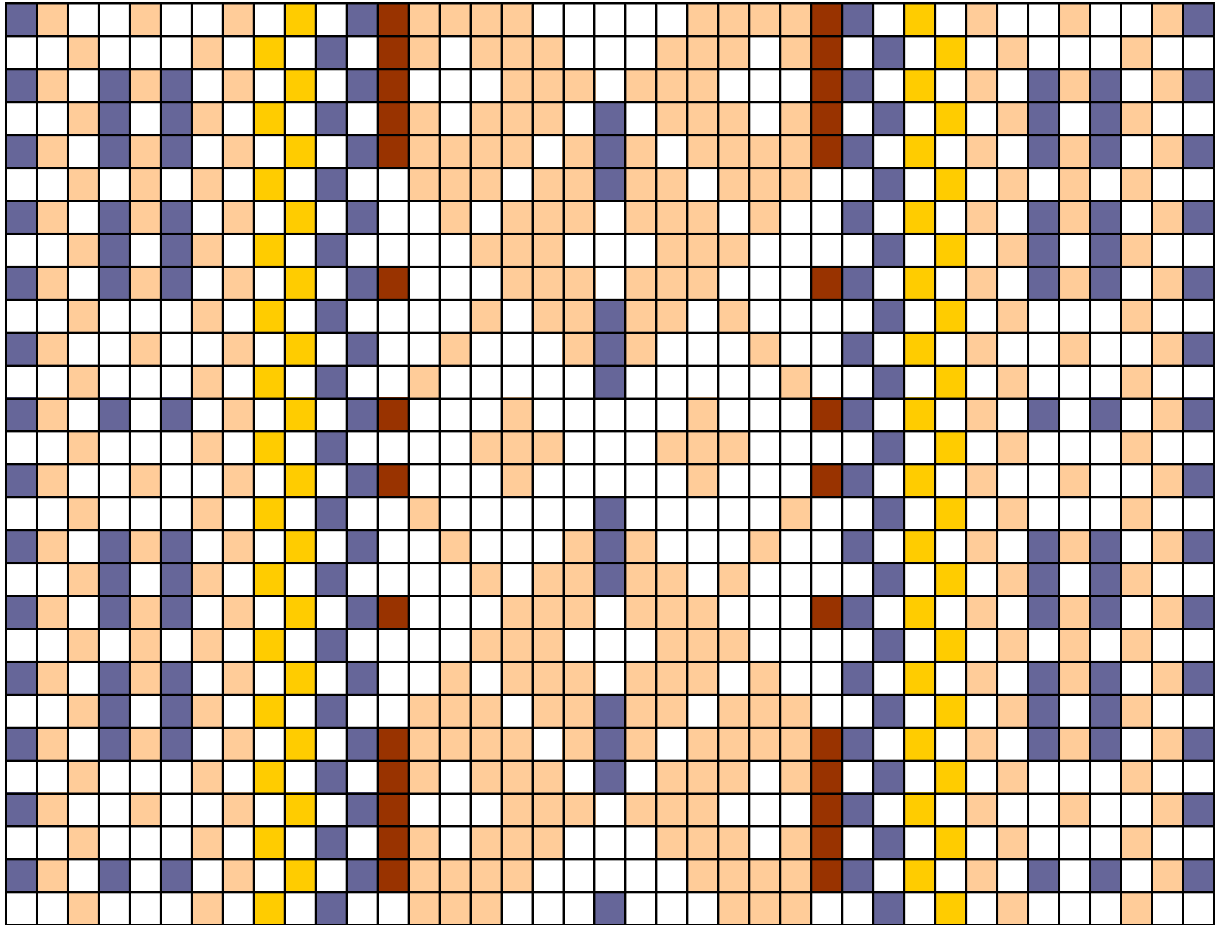
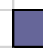



TORMA




ERM A174:24 - Vöö

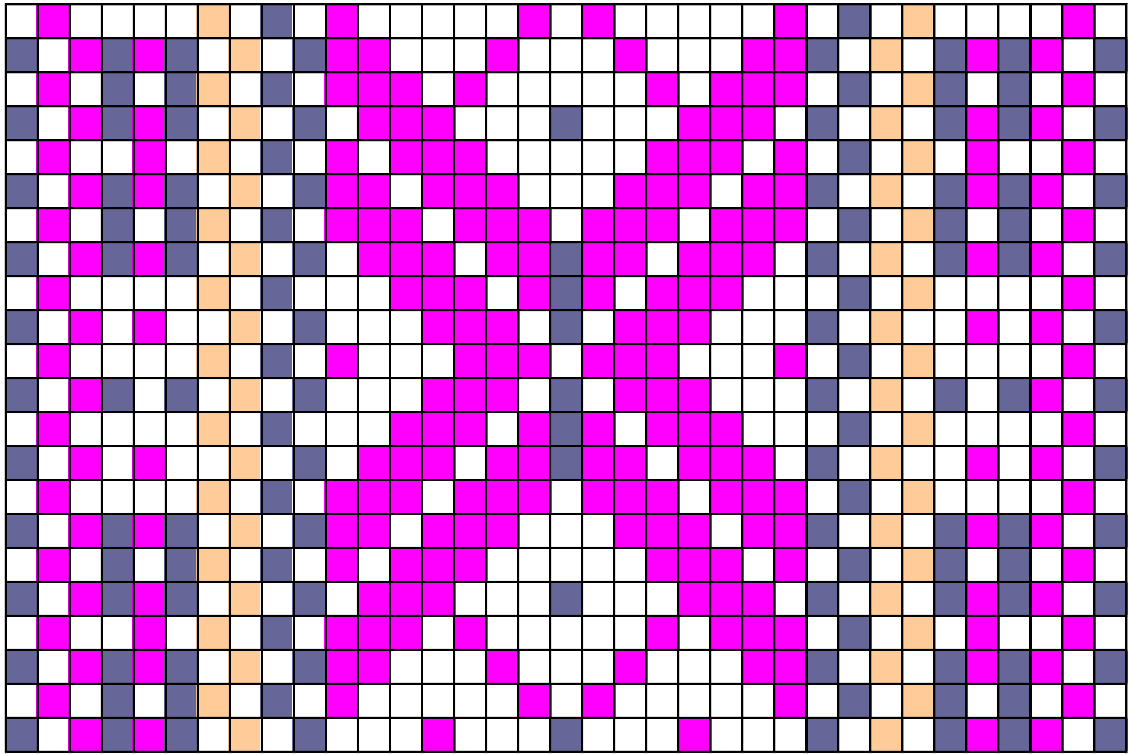
Torma kihelkond

 - tuhm sinakashall

 - beežikaspruun

 - sinepikollane

 - pruun



ERM3919 - Vöö

Torma kihelkond



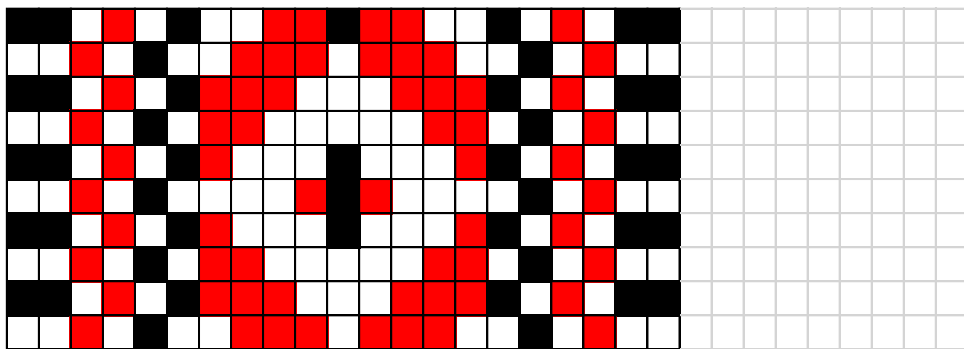
- sinakashall



- lillakasroosa



- beež



ERM3915 - Vöö



-

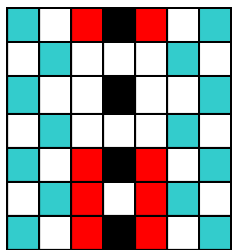
must

Torma kihelkond






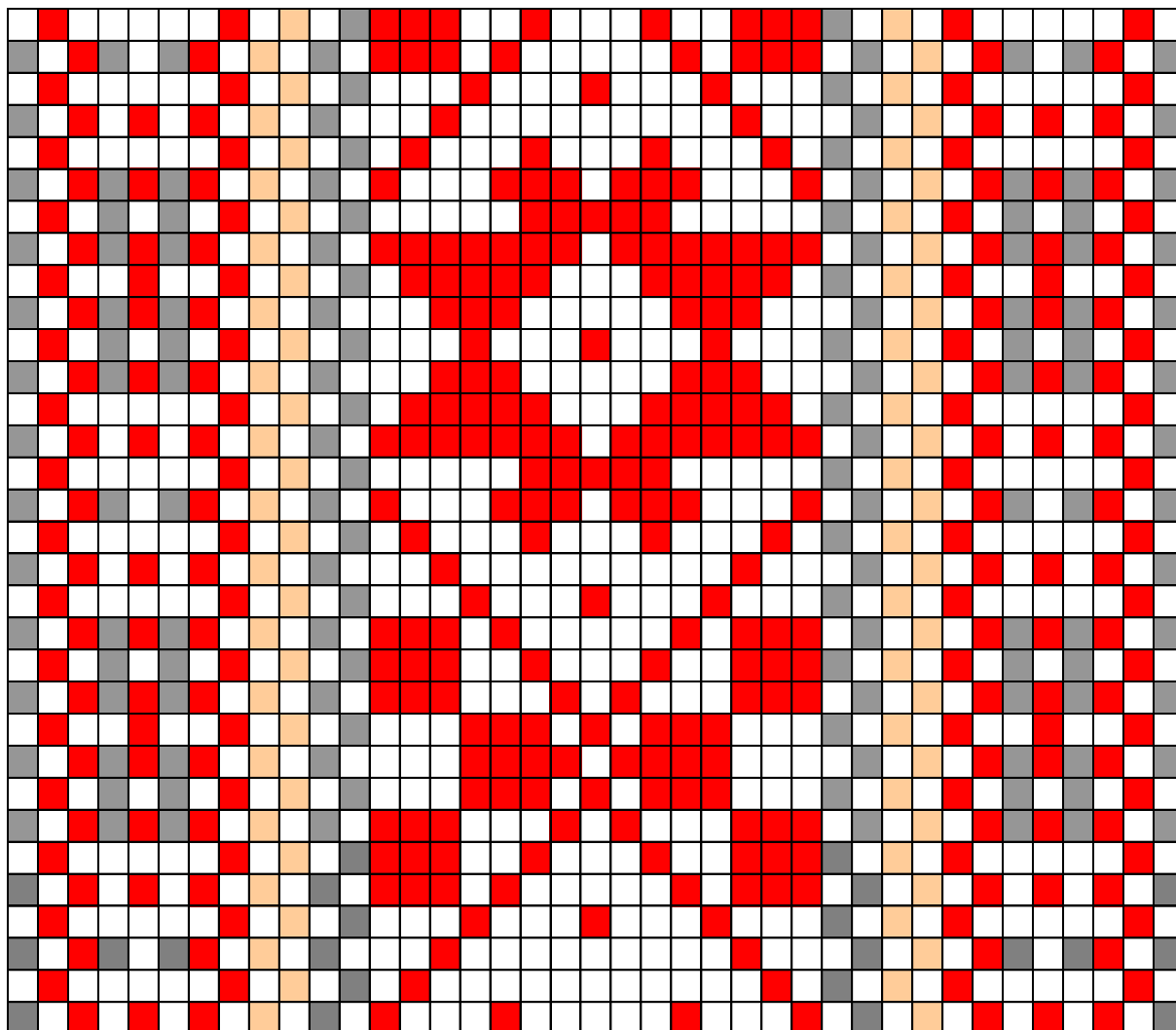
-



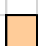
punane

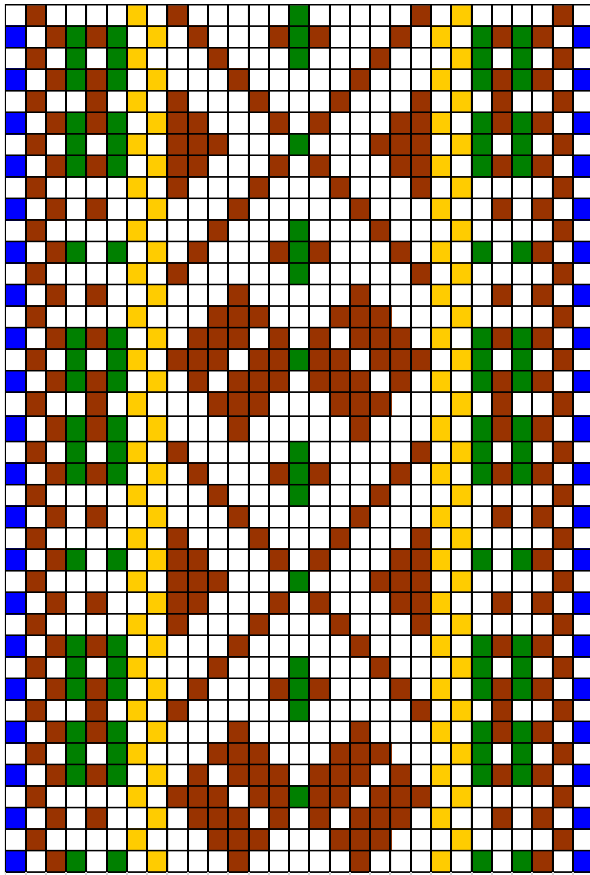


Motiiv 2

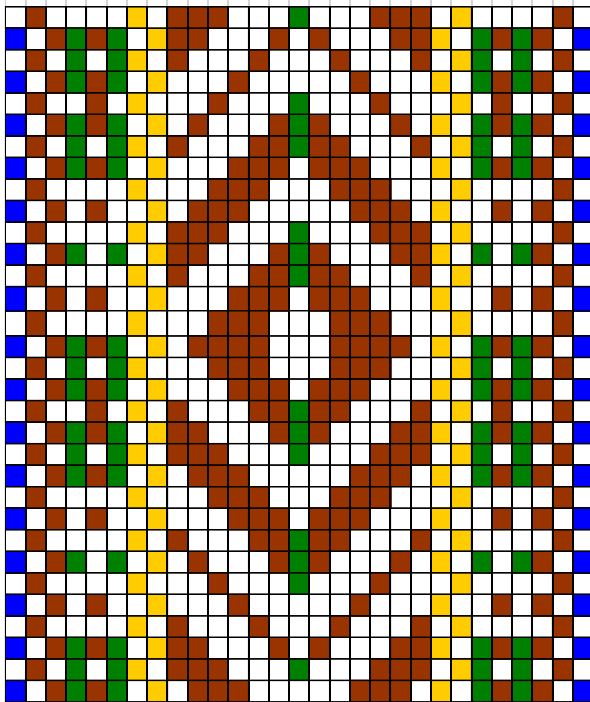
| | | | |
|----------------------------------|---|---|-----------------|
| ERM A509:1699 - Põllepael |  | - | must |
| Torma kihelkond |  | - | sinakasroheline |
| |  | - | punane |



| | | | | |
|---------------------|--|---|---|--------|
| ERM A70:9 - Vöö osa | |  | - | punane |
| Torma kihelkond | |  | - | hall |
| | |  | - | beež |







Motiiv 1
Vöö algus

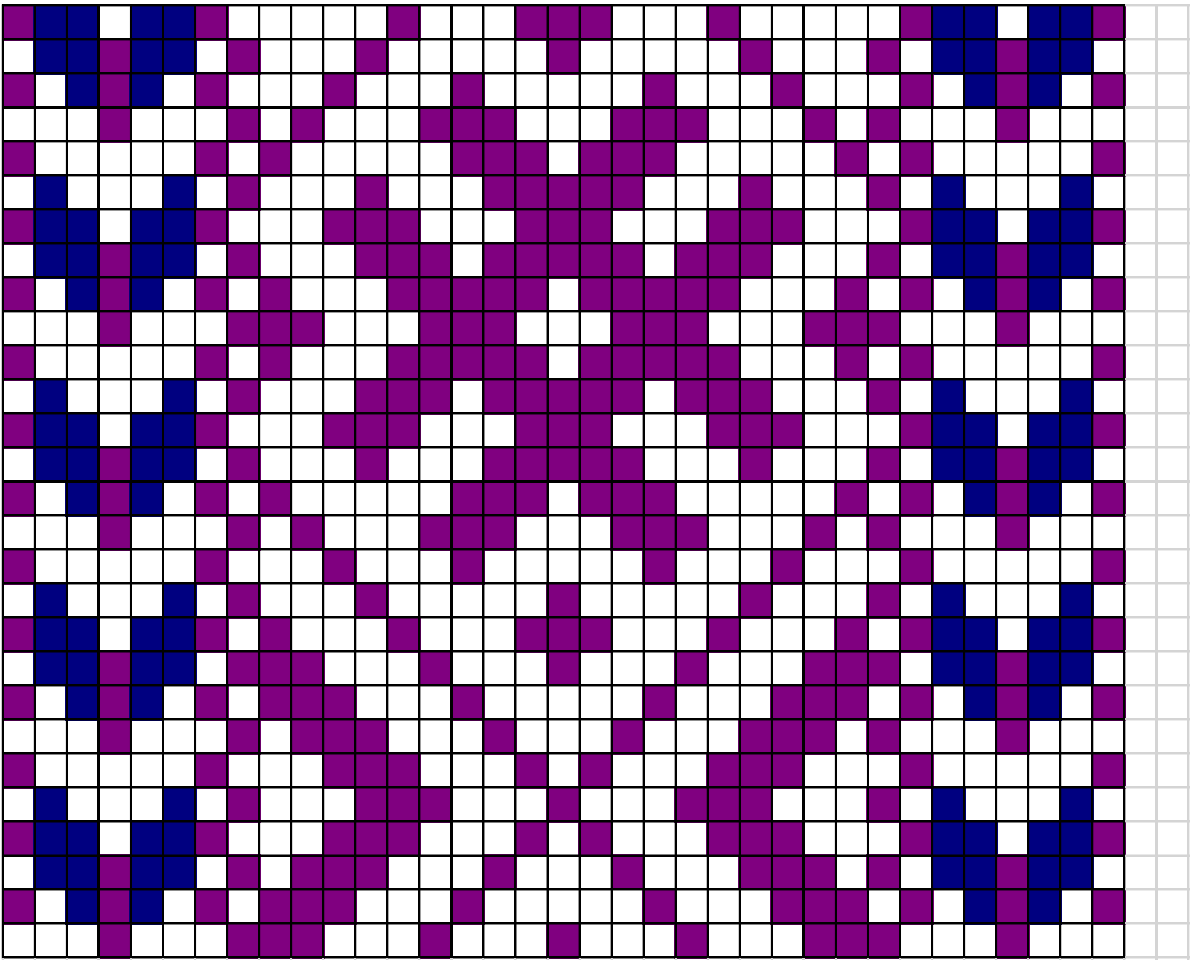


Motiiv 2
Peamotiiv

ERM3922 - Vöö

Torma kihelkond

-  - roheline
-  - pruun
-  - sinepiroheline
-  - sinine



ERM3921 - Vöö

Torma kihelkond



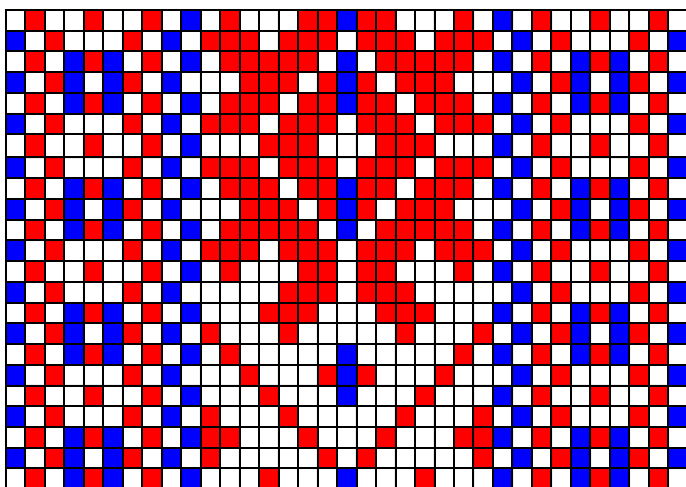
-

lilla

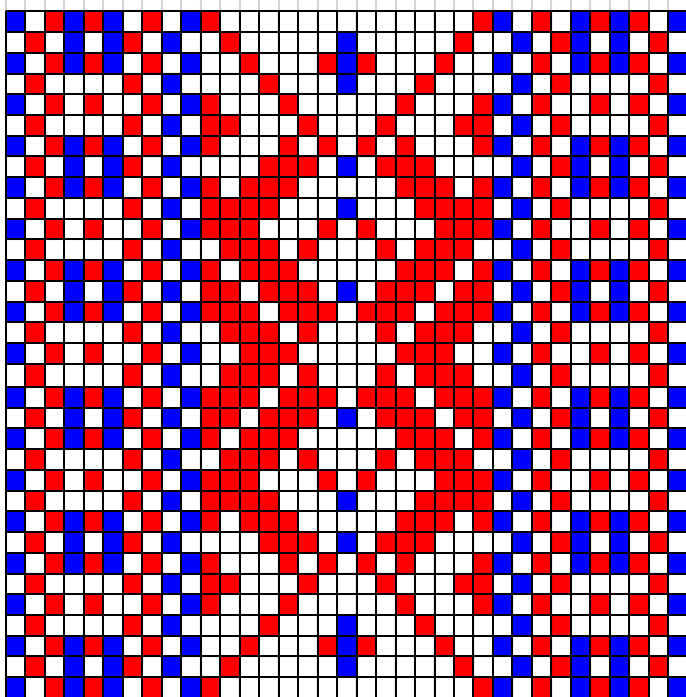


-

tumesinine




Motiiv 1

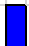


Motiiv 4

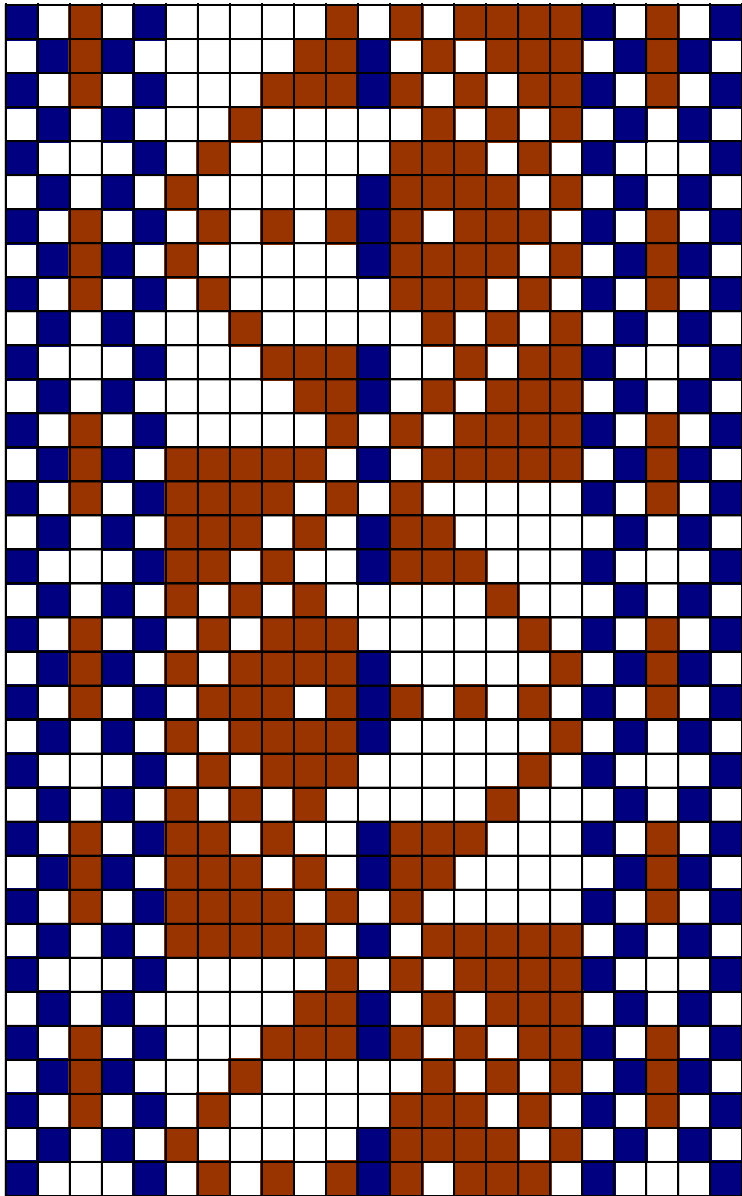
ERM A174:18 - Vöö

Torma kihelkond

 - punane

 - sinine

Motiivide järjekord: 1, 2, 2, 1, 3, 4, 3, 4 jne



ERM180 - Naiste vöö

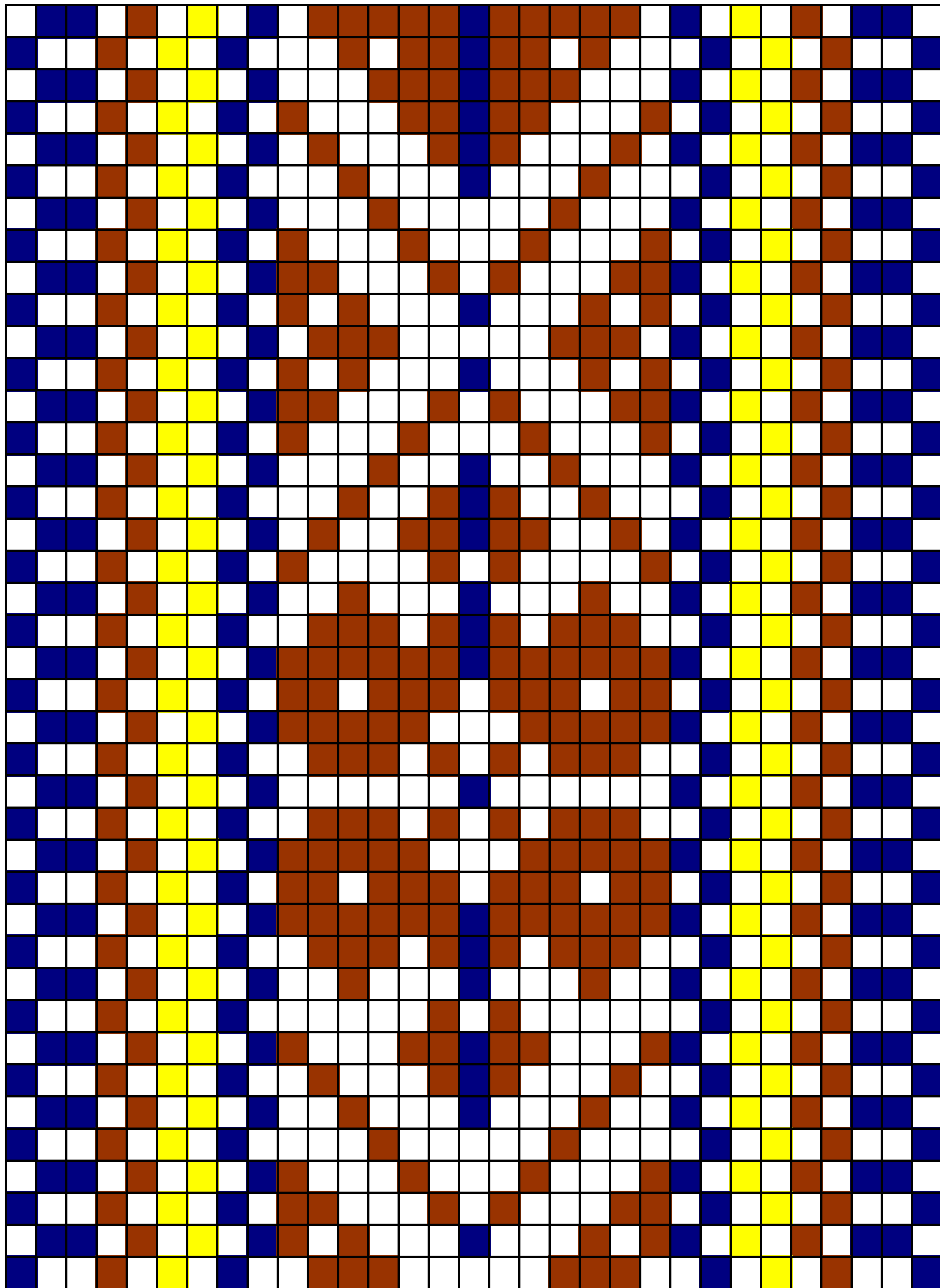


- pruun

Torma kihelkond


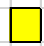



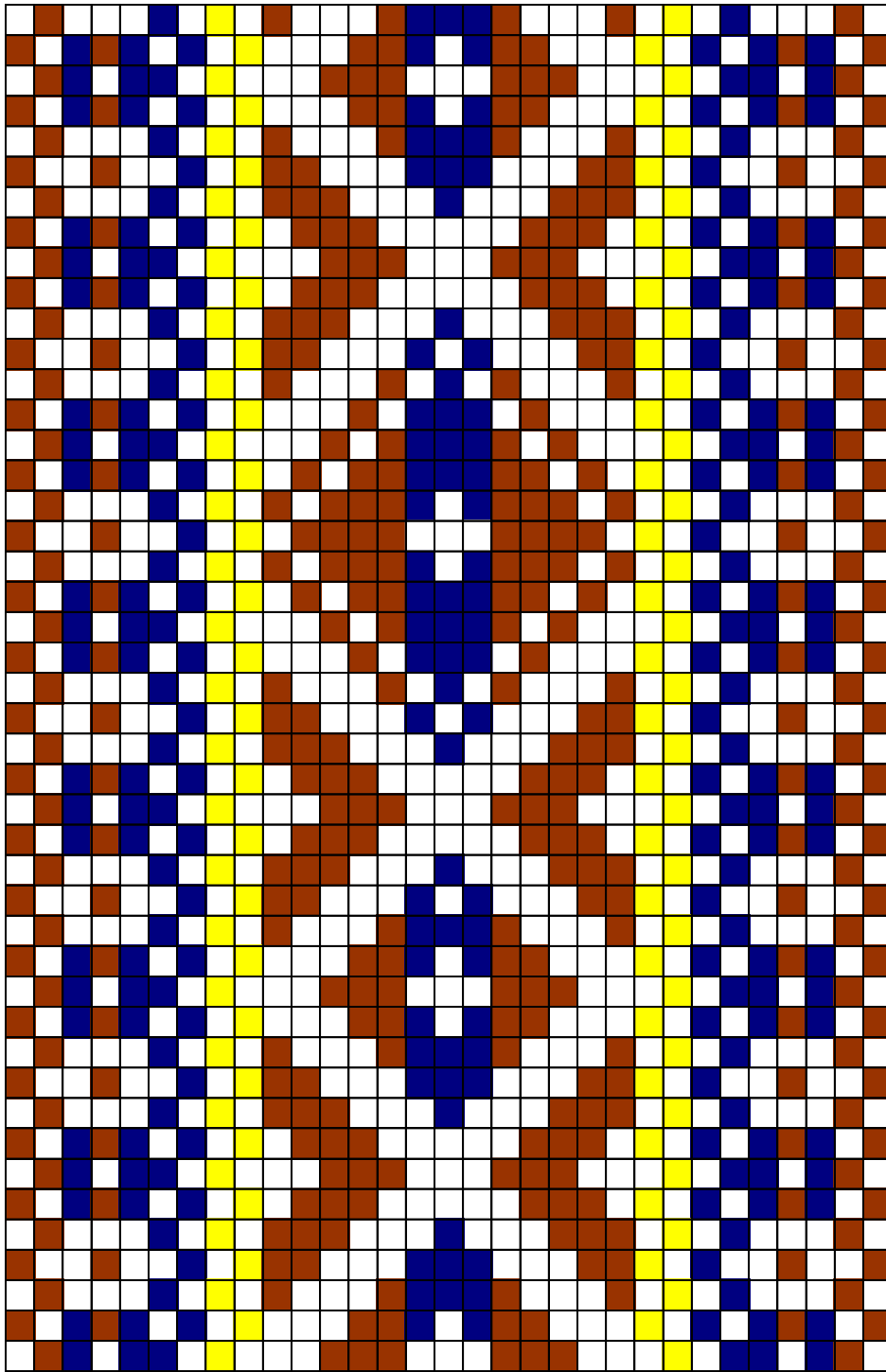
- tumesinine



ERM182 - Naiste vöö


Torma kihelkond

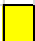
-  - tumesinine
-  - kollane
-  - pruun



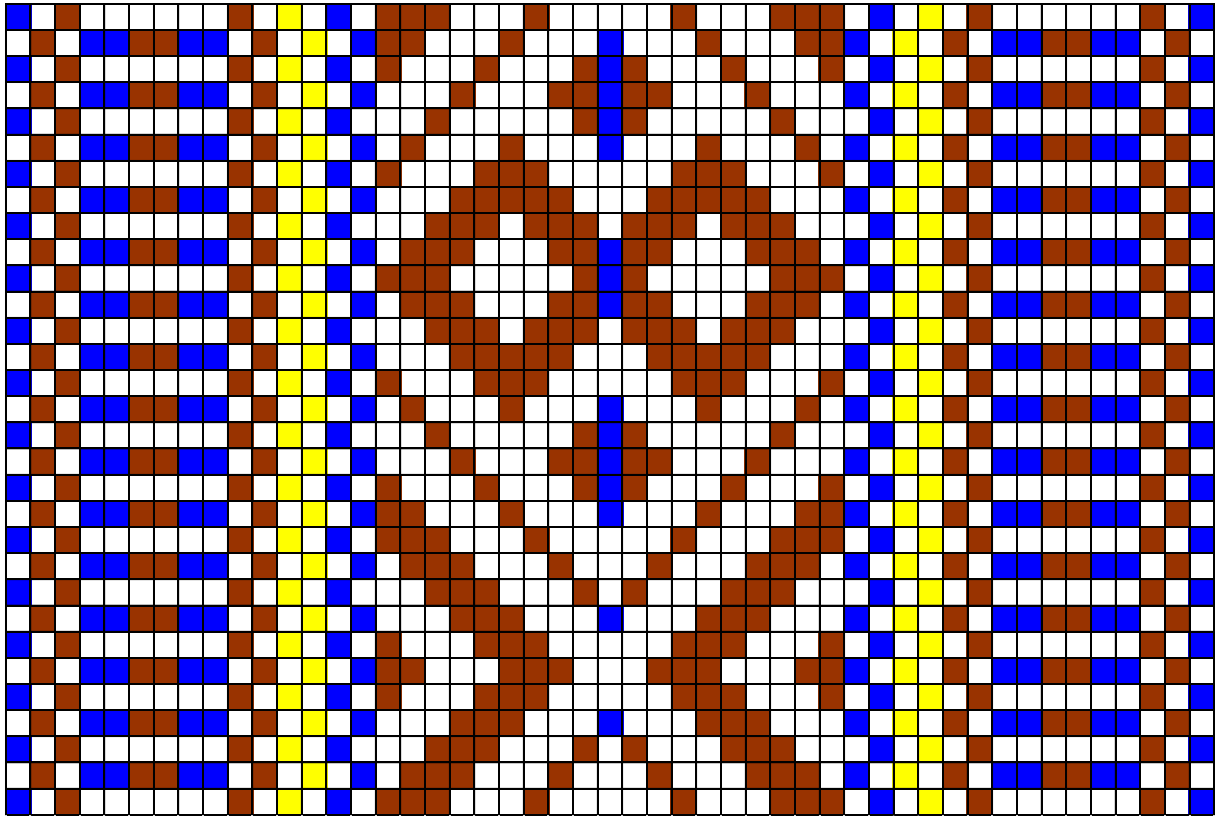
ERM187 - Naiste vöö

Torma kihelkond

 - tumesinine



 - kollane

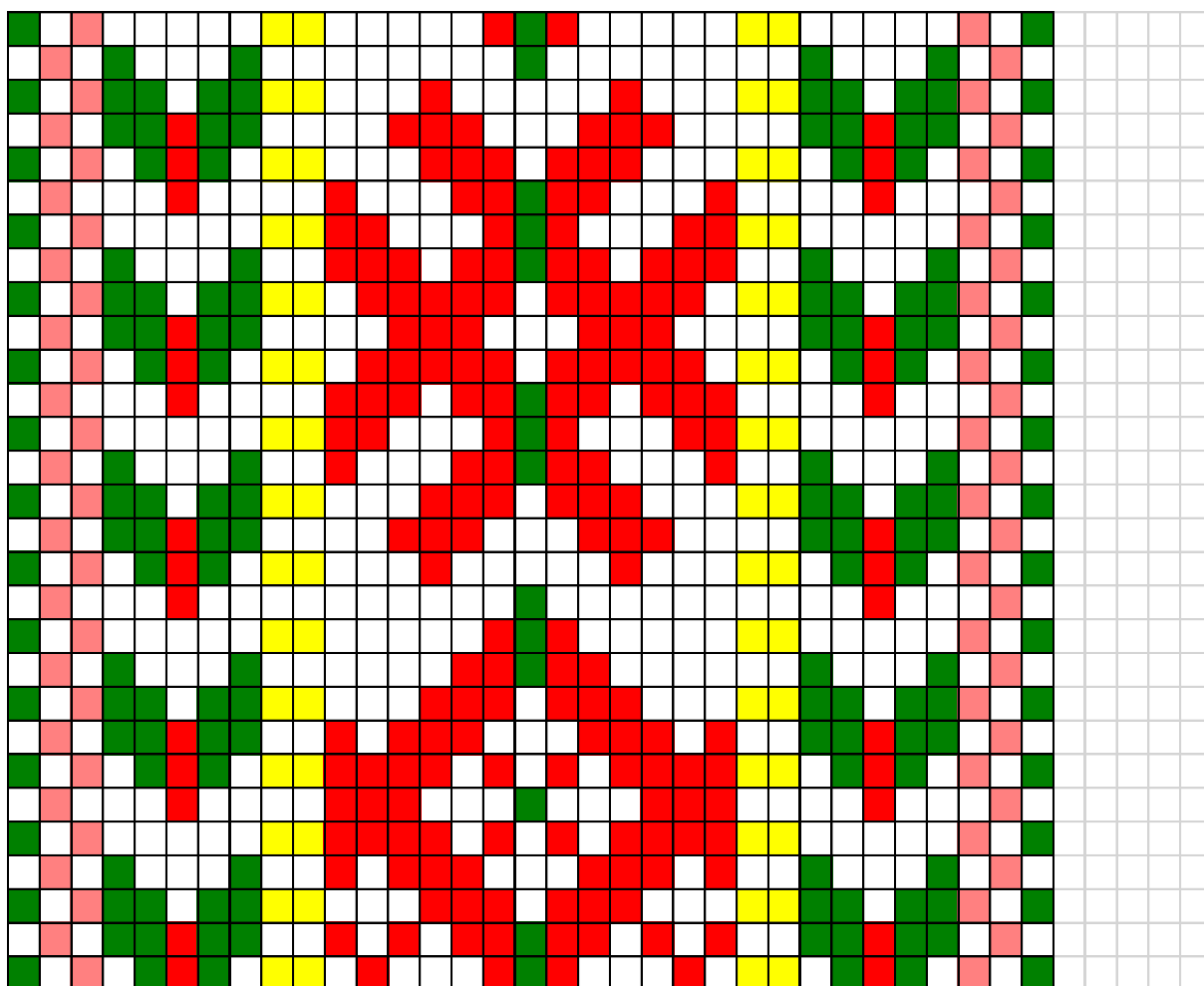
 - pruun



ERM188 - Naiste vöö katkend

Torma kihelkond

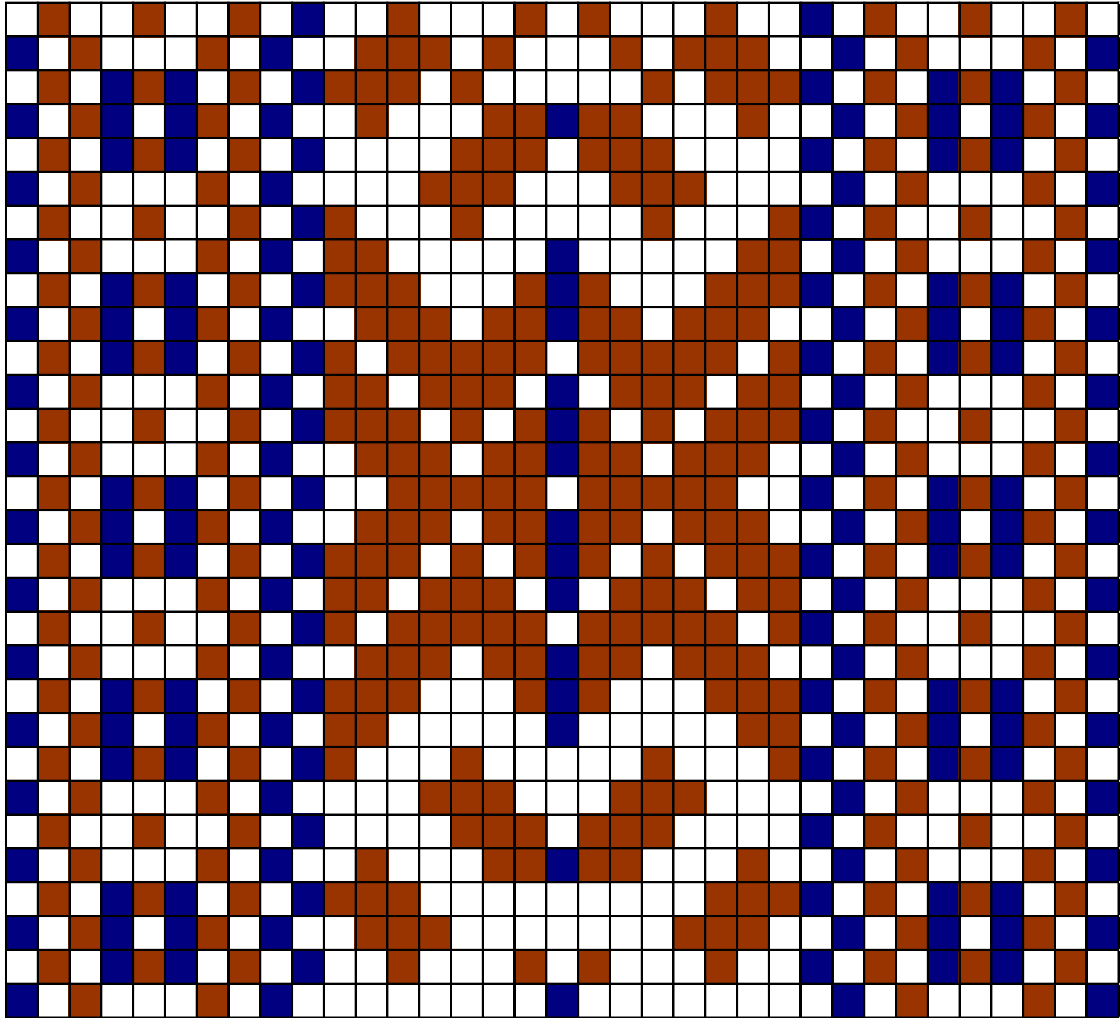
-  - sinine
-  - kollane
-  - pruun



ERM3913 - Naisterahva vöö

Torma kihelkond

- roheline
- punane
- kollane
- helepunane



ERM3914 - Naiste vöö



-

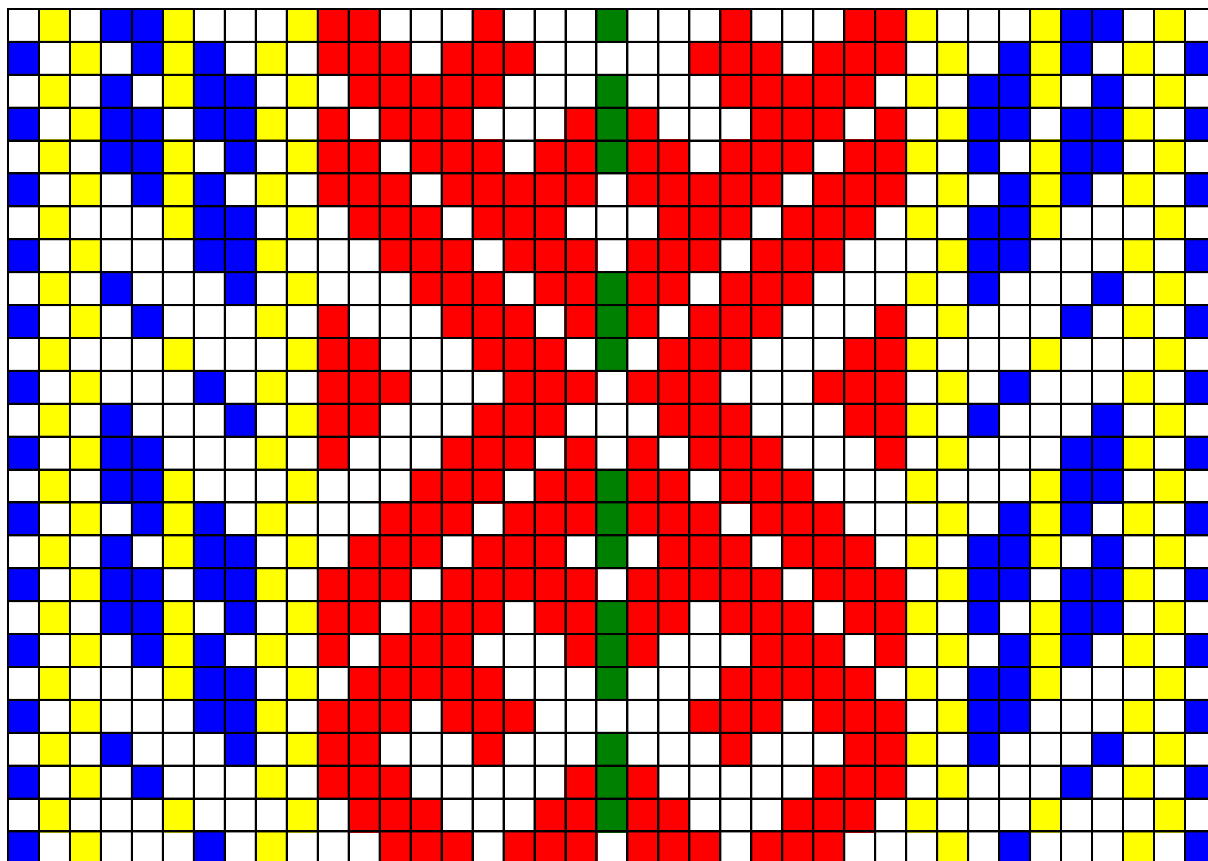
tumesinine

Torma kihelkond







-

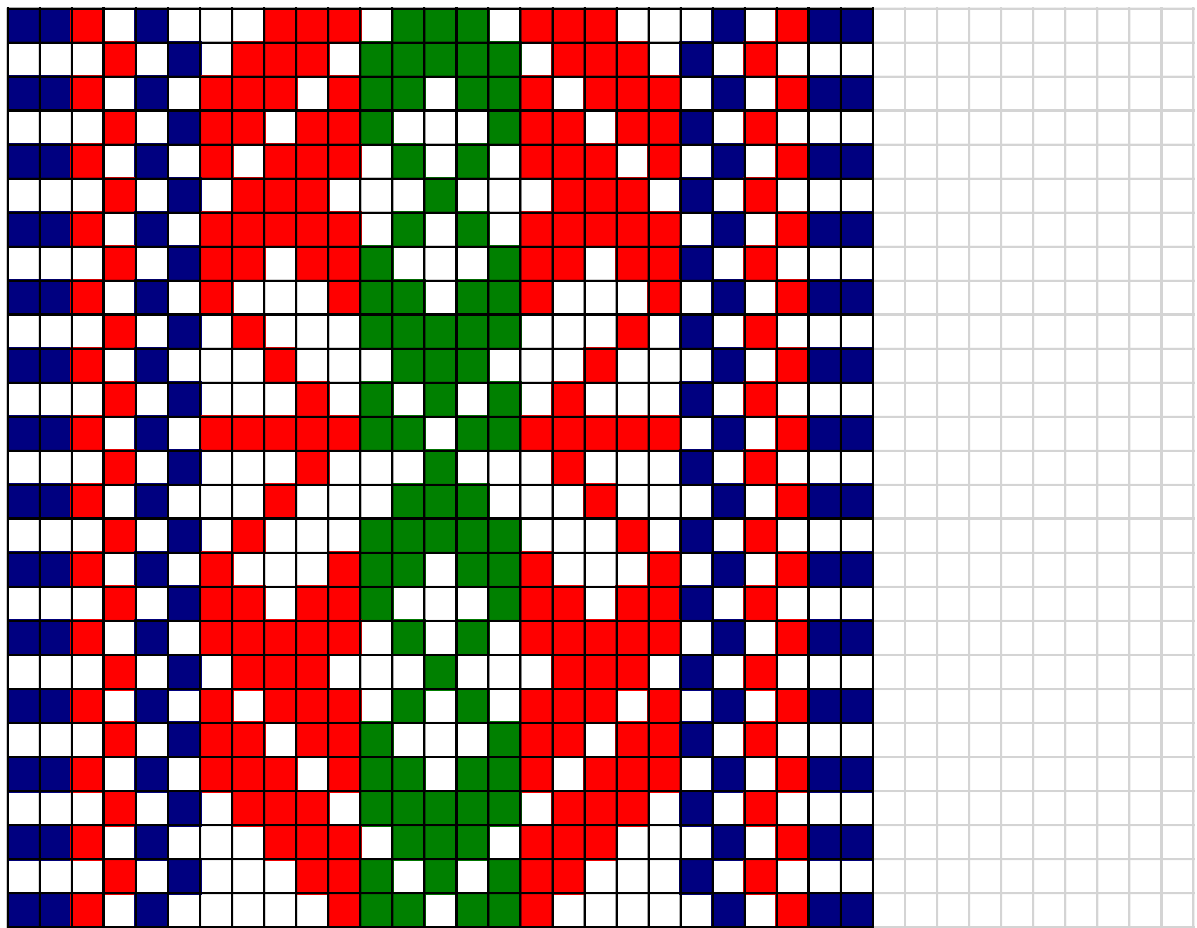
pruun



ERM A174:1 - Vöö


Torma kihelkond


-  - sinine
-  - kollane
-  - punane
-  - roheline




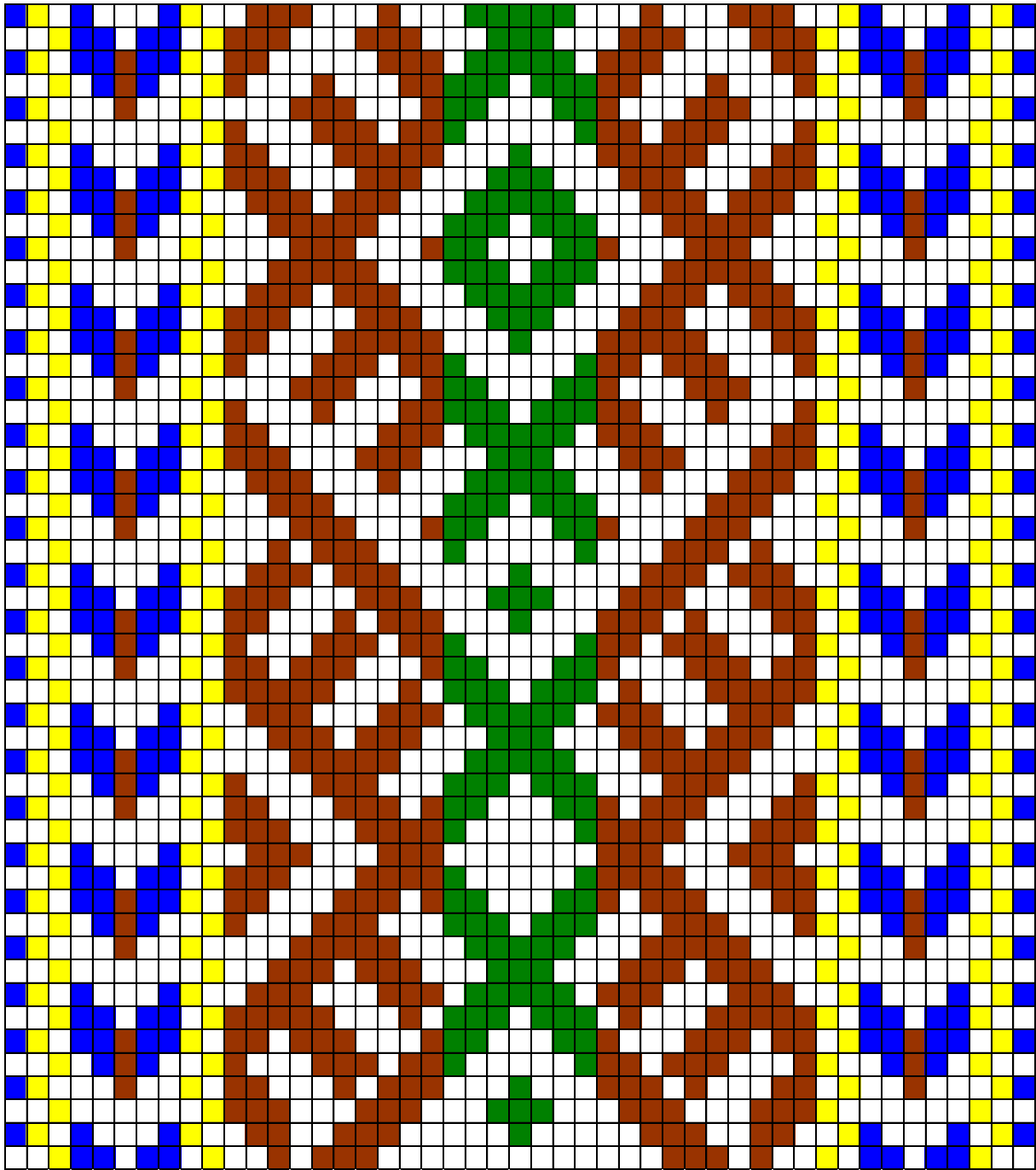
ERM A194:5 - Naiste vöö

Torma kihelkond

 - roheline





 - tumesinine

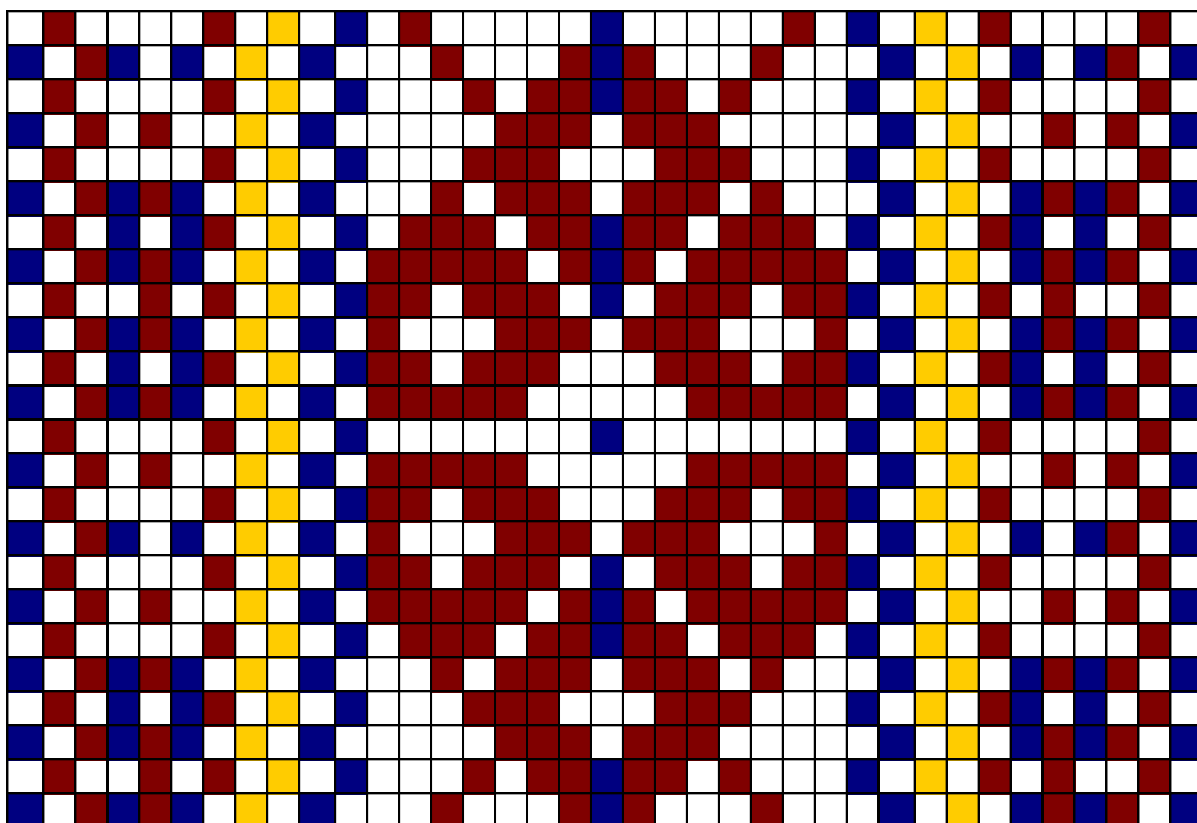
 - punane



ERM A509:1172 - Naiste vöö




Torma kihelkond

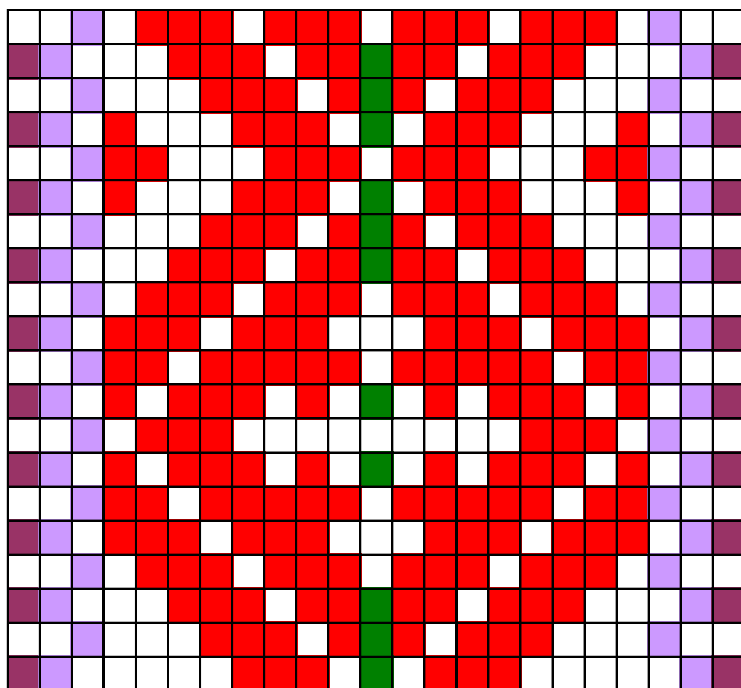
-  - roheline
-  - sinine
-  - pruun
-  - kollane



ERM174:24 - Vöö


Torma kihelkond

| | | |
|---|---|--------------|
|  | - | tumesinine |
|  | - | kollane |
|  | - | punakaspruun |

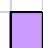


ERM A509:1172 - Naiste vöö

Torma kihelkond

 - roheline

 - punane

 - helelilla

 - lilla