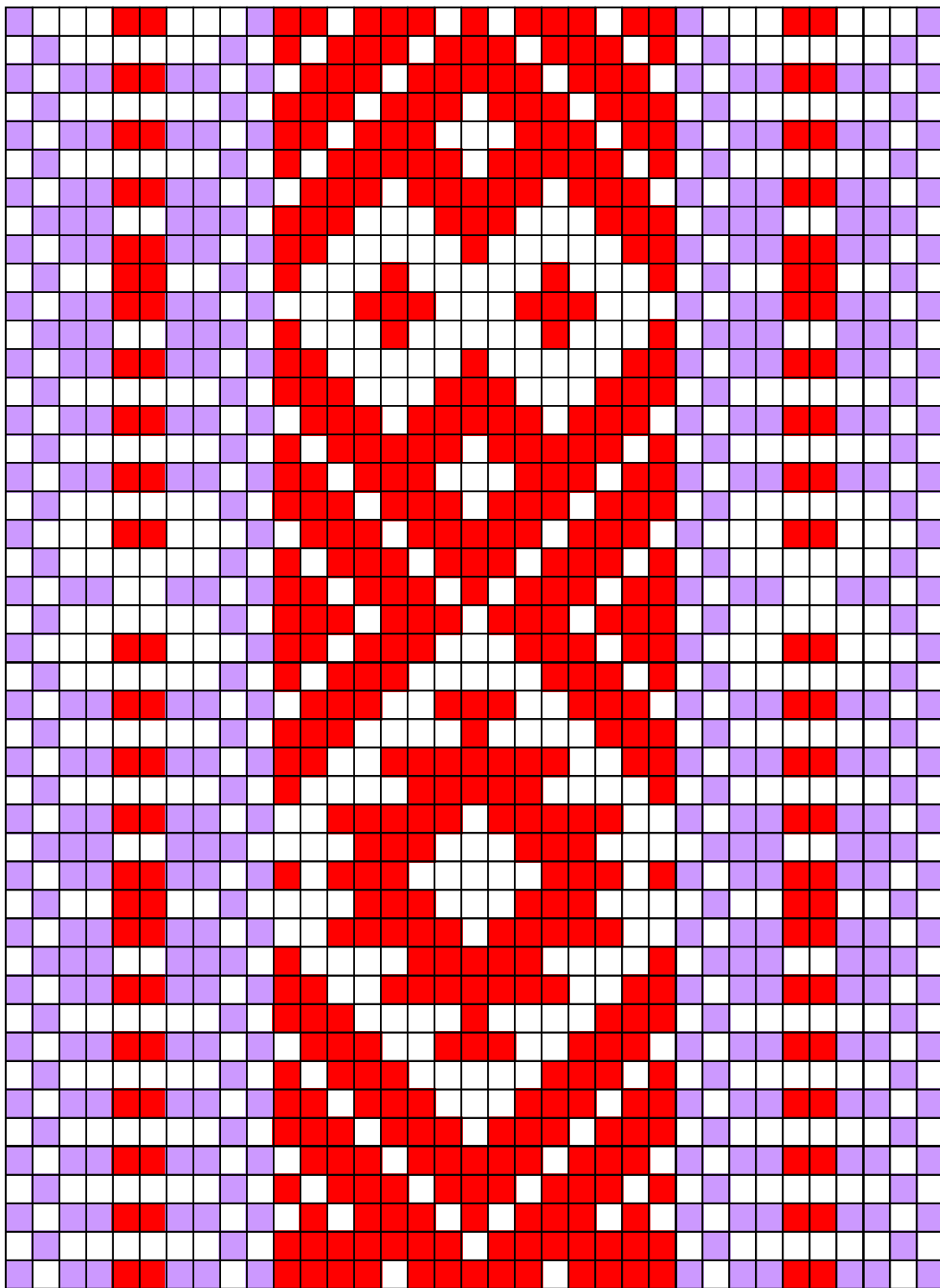




# NÕO

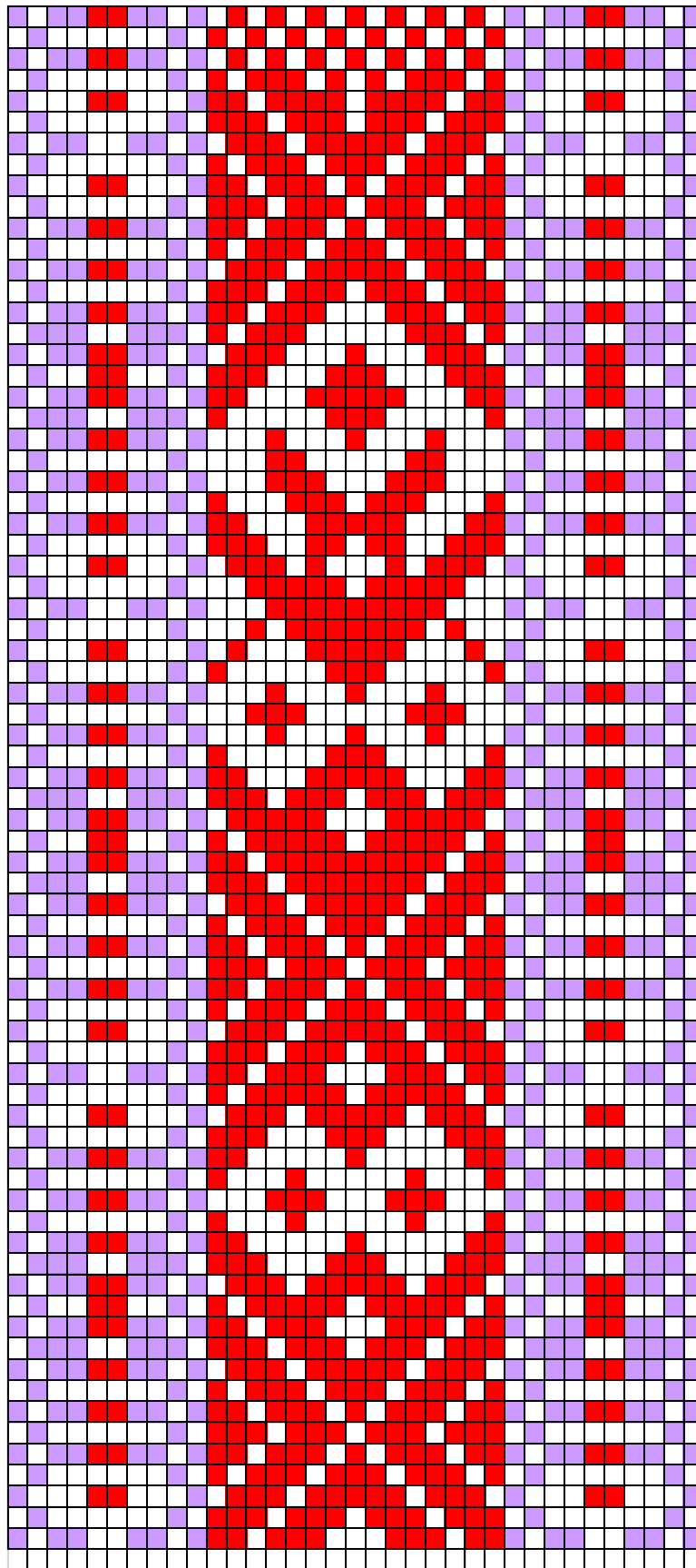


**ERM6173 - Vöö (teine ots)**

**Nõo kihelkond**


 - roosakaspunane


 - lillakashall

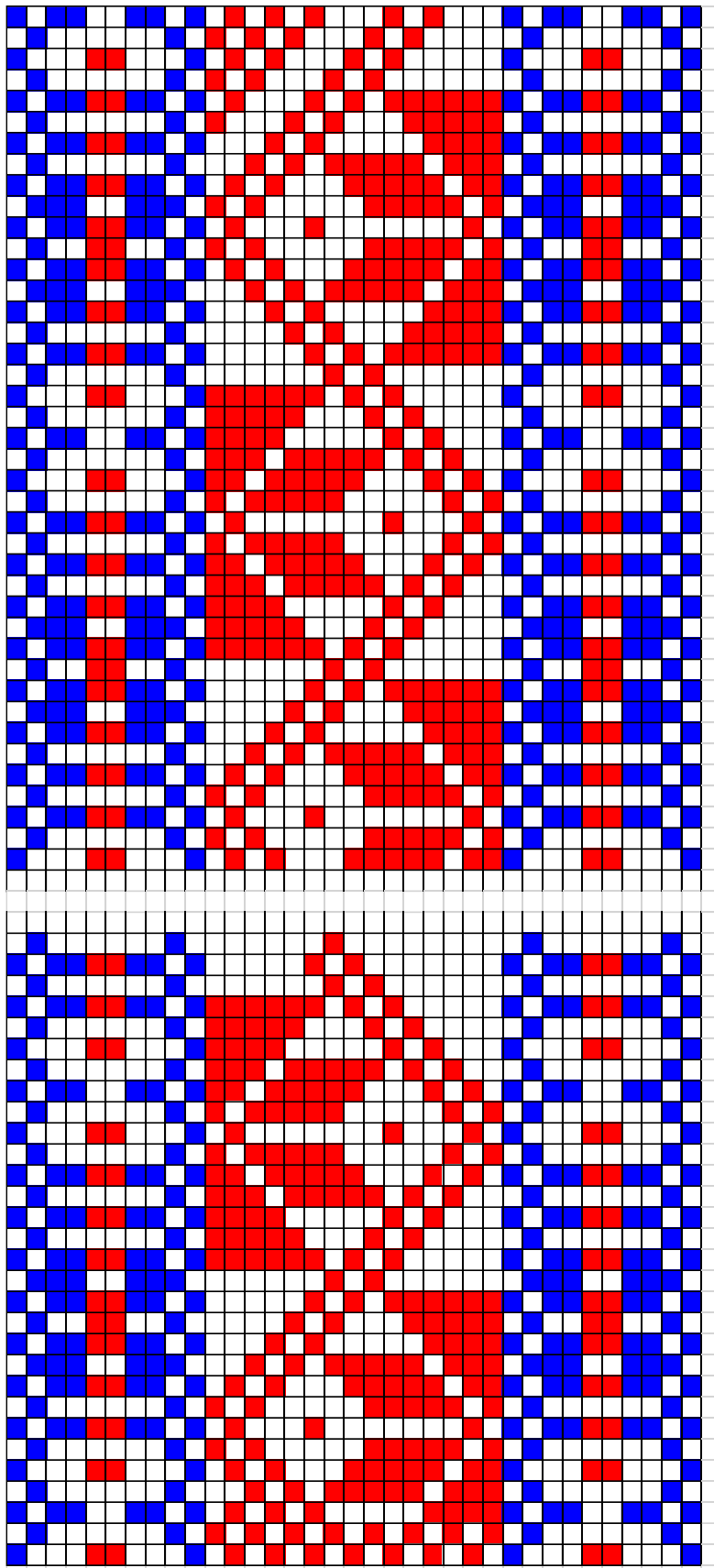


ERM6173 - Vöö (üks ots)

Nõo kihelkond


 - roosakaspunane


 - lillakashall

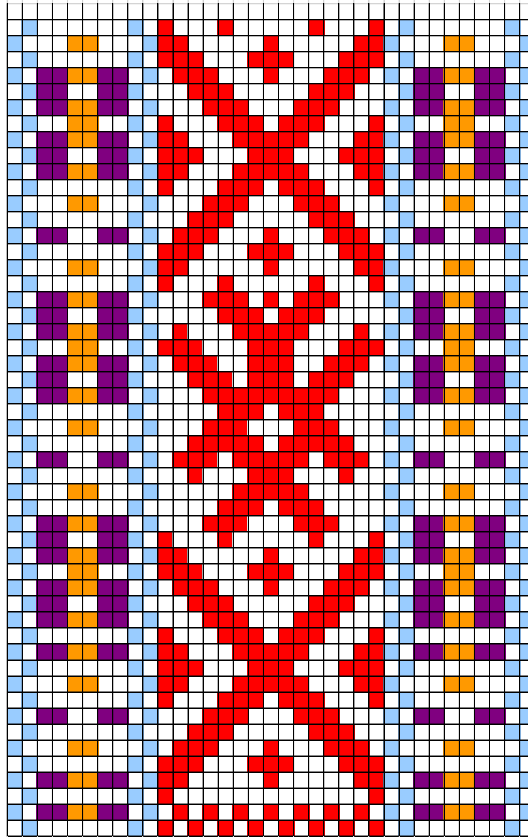
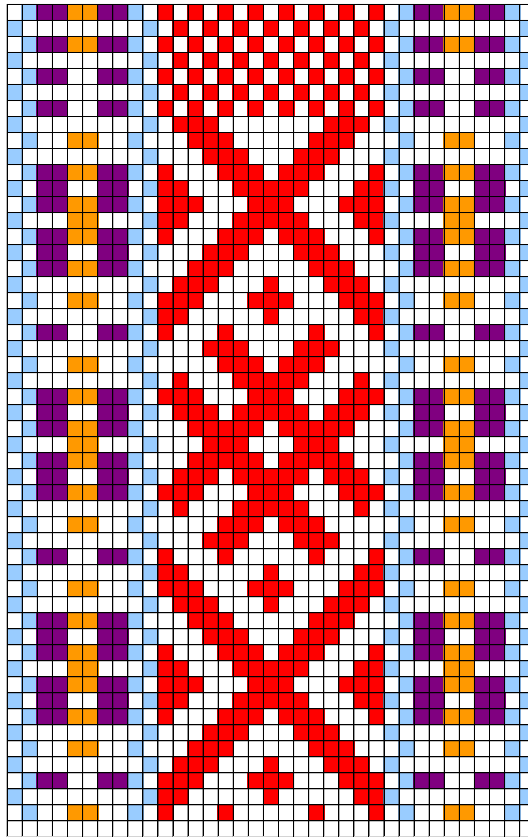


**ERM6150 - Vöö**

**Nõo kihelkond**


 - punane


 - sinine



ERM6142 - Vöö

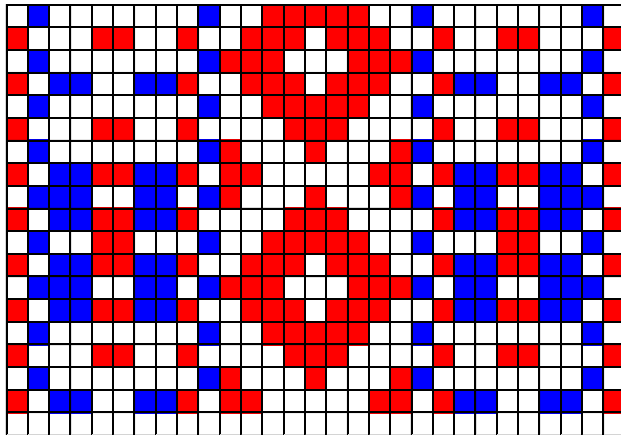
Nõo kihelkond

 - punane

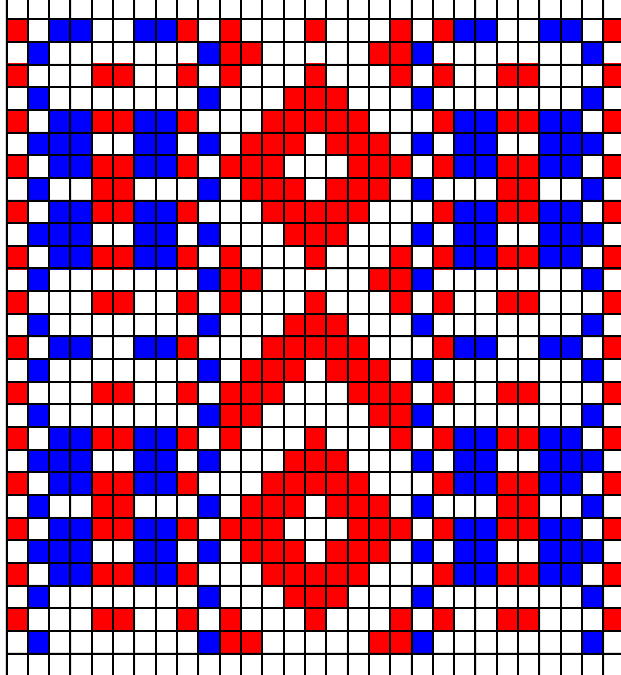
 - helesinine

 - lilla

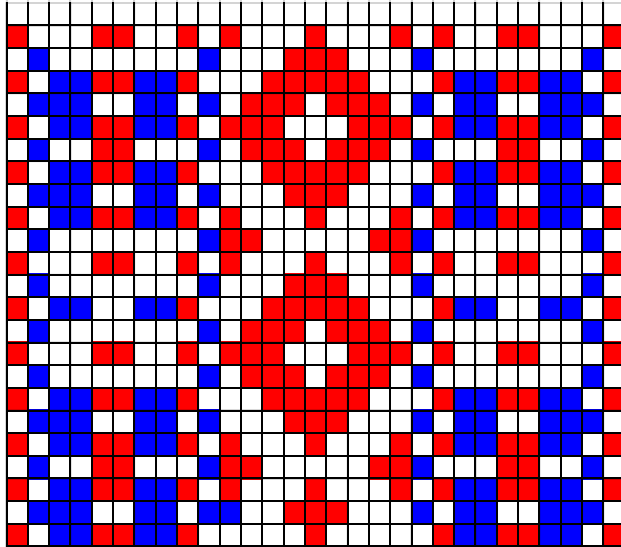
 - oranž



21. motiiv





22. motiiv

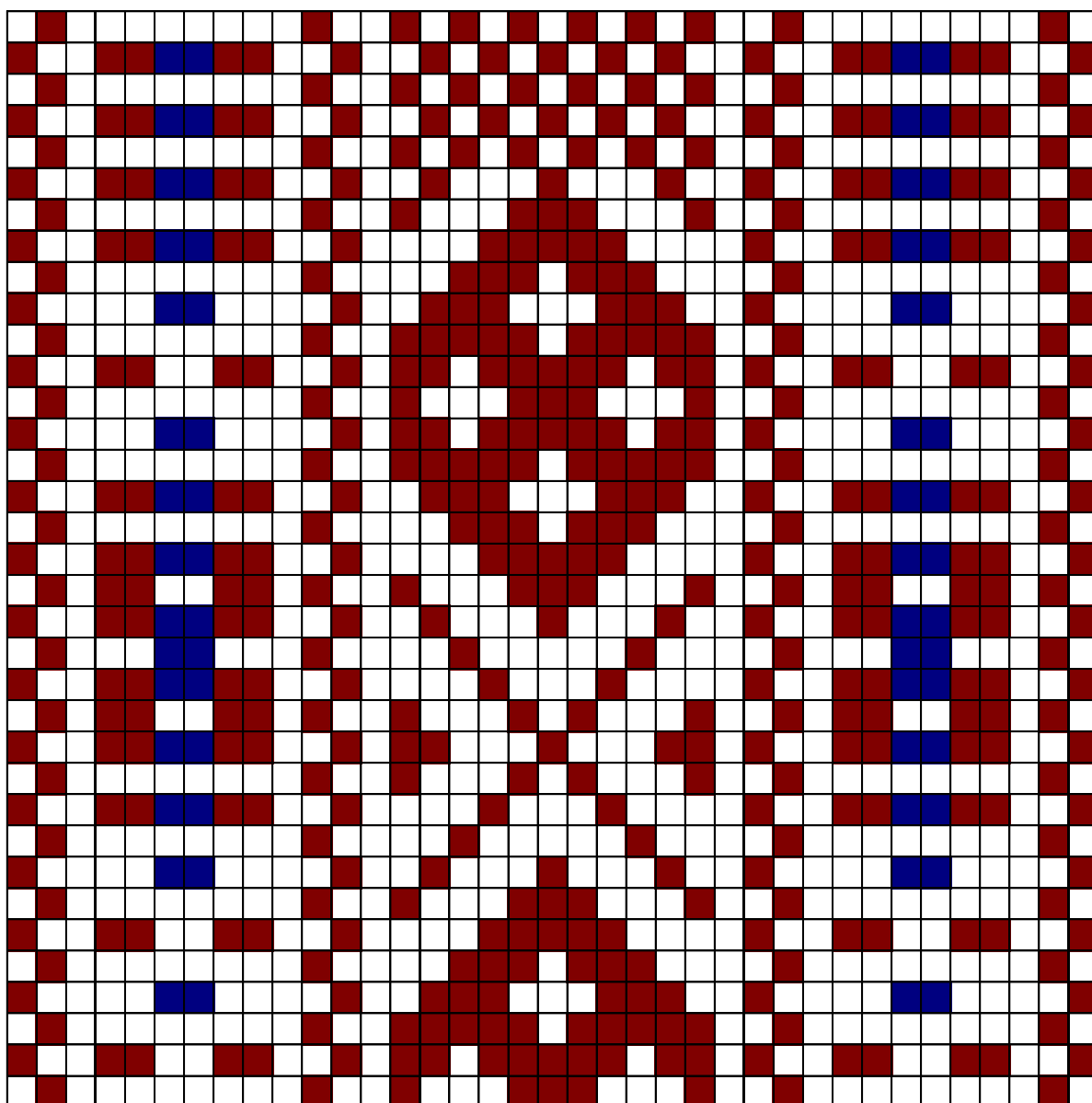


**ERM6169 - Vöö**

**Nõo kihelkond**

 - sinine

 - tumeroosa



**ERM6103 - Vöö**

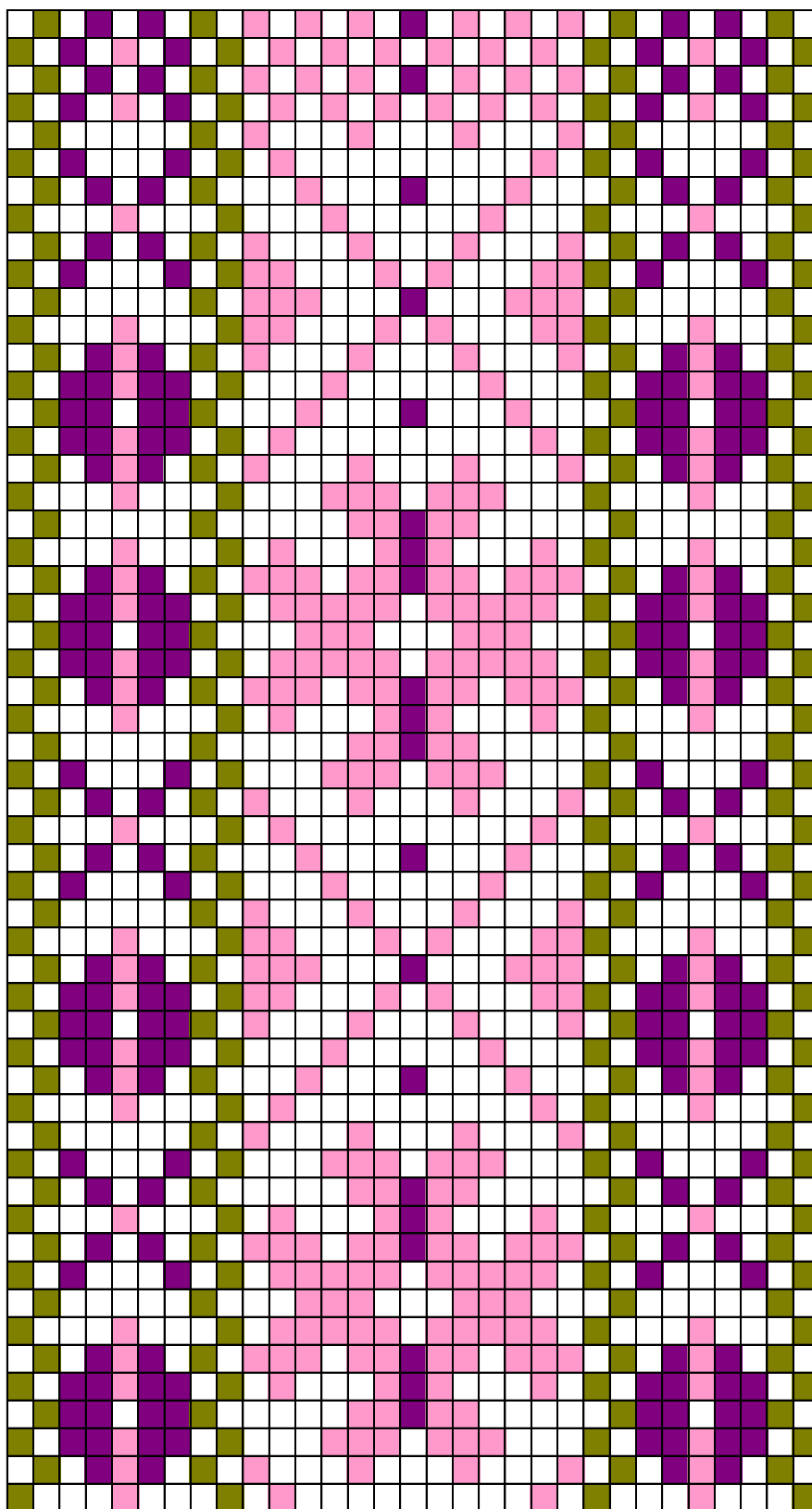


- tumesinine

**Nõo kihelkond**



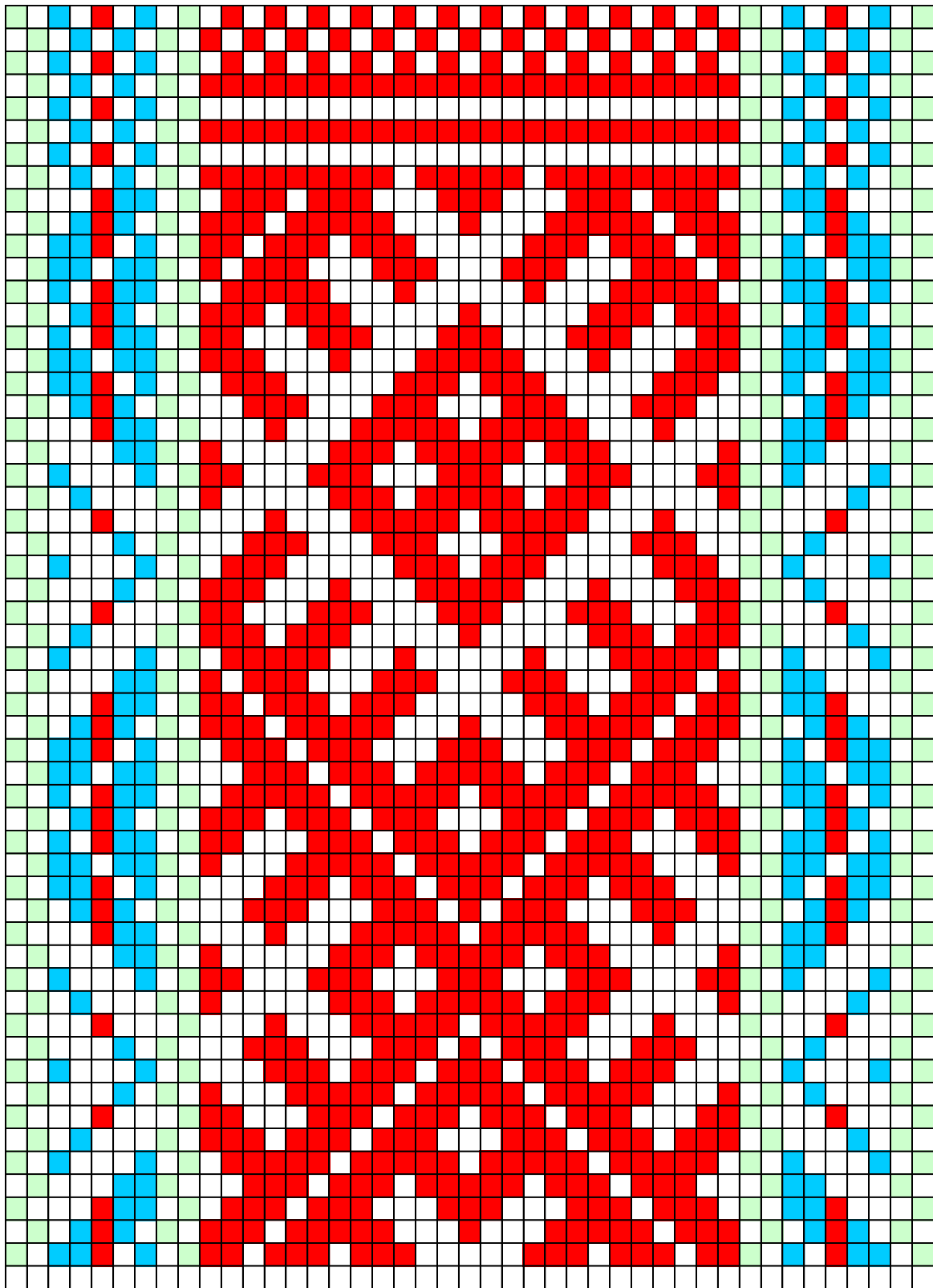
- punakaspruun



**ERM6128 - Vöö**

**Nõo kihelkond**

- |   |   |                |
|---|---|----------------|
|  | - | roosa          |
|  | - | tumelilla      |
|  | - | rohekaskollane |



**ERM392 - Vöö (üks ots)**

**Nõo kihelkond**



- roosakaspunane

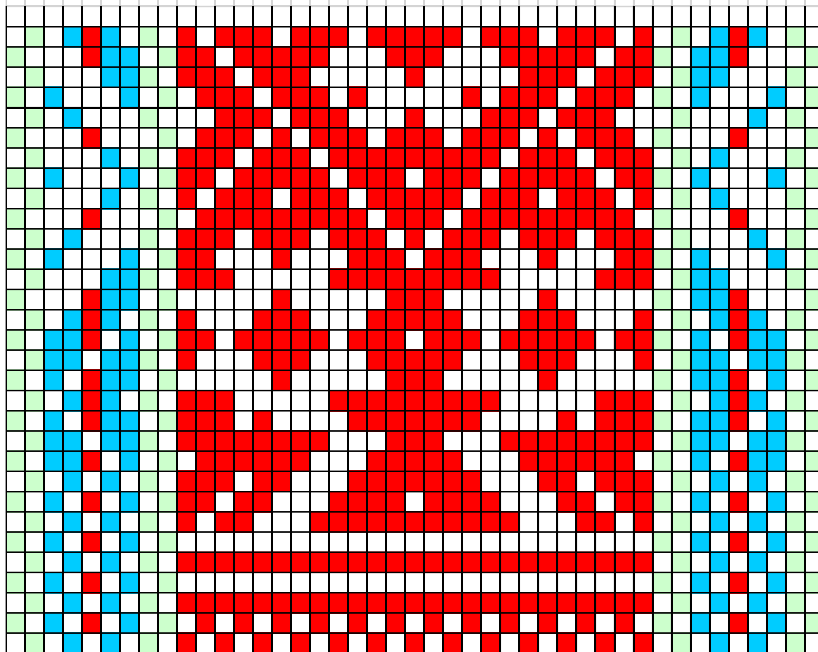
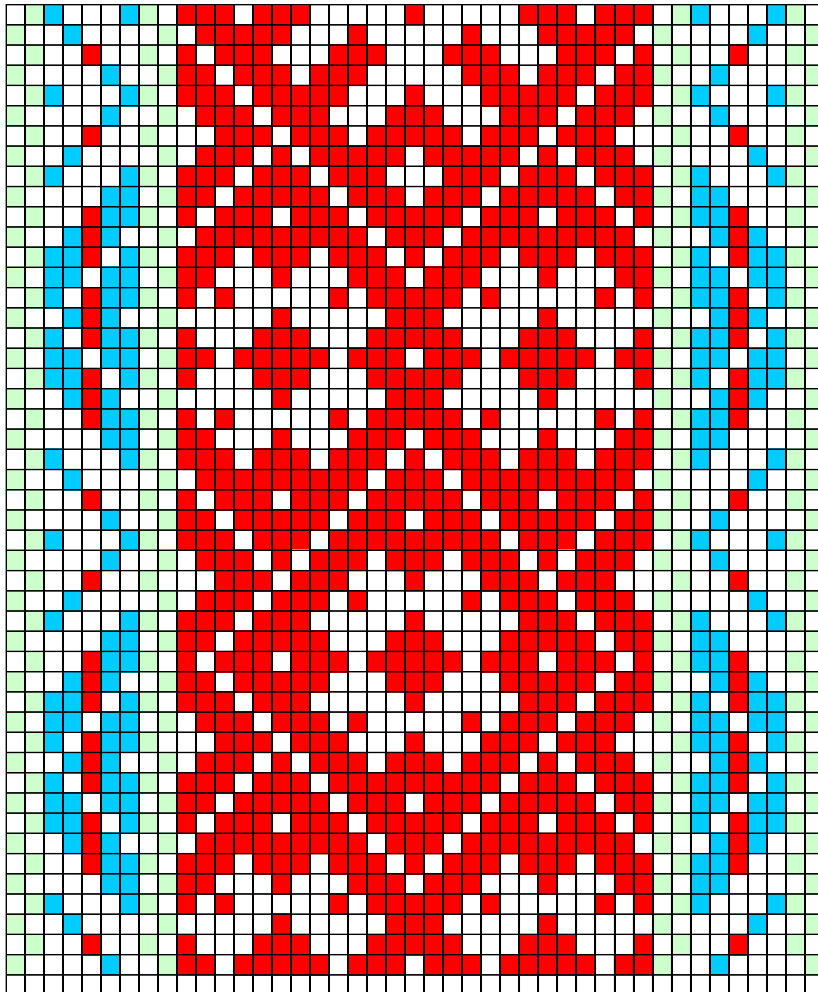


- heleroheline






- helesinine





**ERM392 - Vöö (teine ots ja põhimõtiiv)**

**Nõo kihelkond**

-  - roosakaspunane
-  - helesroheline
-  - helesinine