

## APPAREL Q3

---

<b>WOMEN</b>	7
FLORERA - Optic Bloom	7
FLORERA - Water Jungle	8
CITY STORIES - L.A.	9
CITY STORIES - Paris	15
CITY STORIES - Berlin	19
PREMIUM ESSENTIALS	22
DENIM	24
ADICOLOR	25
GRAPHICS	29
WINTER	30
<b>MEN</b>	32
BACK TO SCHOOL	32
BECKENBAUER	35
SUPERSTAR	39
STAN SMITH	43
STREET Pack	45
ITASCA	51
DENIM	52
STREET MODERN	54
PREMIUM ESSENTIALS	58
ESSENTIALS	59
GRAPHICS	60
WINTER	67
ACTION SPORTS	67

<b>JUNIORS</b>	73
GIRLS	73
BOYS	74
<b>INFANTS</b>	76

## FOOTWEAR Q3

---

<b>WOMEN</b>	79
SUPERSTAR	79
RUNNING - ZX FLUX	80
RUNNING - TUBULAR	83
RUNNING	84
STAN SMITH	84
CLASSICS	86
BASKETBALL	87
<b>MEN</b>	87
SUPERSTAR	87
RUNNING - ZX FLUX	90
RUNNING - TUBULAR	95
RUNNING	96
STAN SMITH	97
CLASSICS	99
BASKETBALL	100
ACTION SPORTS	103
Porsche by Originals	107
<b>JUNIORS</b>	108
SUPERSTAR	108
RUNNING - ZX FLUX	108
RUNNING - TUBULAR	110
RUNNING	110
STAN SMITH	111
BASKETBALL	112
<b>CHILDREN</b>	113

INFANTS	113
SUPERSTAR	113
RUNNING - ZX FLUX	114
RUNNING - TUBULAR	115
RUNNING	115
STAN SMITH	116
BASKETBALL	116
CRIBS	118

---

### ACCESSORIES Q3

ACC	120
BECKENBAUER	120
SNAKE Pack	120
WHITE Pack	121
BACK TO SCHOOL	121
CAMO Pack	122
FLORAL Pack	123
WOMEN -Paris	125
WOMEN - L.A.	125
KIDS - Star Wars	126

---

### Rita Ora Q3

APPAREL	128
FOOTWEAR	131
ACCESSORIES	132

---

### NIGO Q3

APPAREL	134
ACCESSORIES	135

**APPAREL Q3**

WOMEN - FLORERA - Optic Bloom



AB1995  
 deliv.07/15

**FARM TANK**

The Optic Bloom Tank is the perfect canvas for a vibrant all-over kaleidoscopic print. This slightly loose fitted jersey tank features deep armholes, a flattering u-shaped neckline and a big adidas Trefoil graphic on the front.

100% Polyester, single jersey, 168g

**AB1995** multicolor

Size 32-44

34,95 €



AB1980  
 deliv.07/15

**FARM BIG LOGO TEE**

The Optic Bloom Tee is the perfect canvas for a vibrant all-over kaleidoscopic print. This jersey tee features a flattering u-shaped neckline and a big adidas Trefoil graphic on the front.

100% Polyester, single jersey, 168g

**AB1980** multicolor

Size 32-44

34,95 €



AB1989  
 deliv.07/15

**FARM SWEATSHIRT**

The Optic Bloom Sweatshirt is the perfect canvas for a vibrant all-over kaleidoscopic print. This loose fitted French terry pullover features a flattering u-shaped neckline and a big adidas Trefoil graphic on the front.

**AB1989** multicolor

Size 32-44

69,95 €



AB1986  
 deliv.07/15

**FARM SUPERSTAR TT**

Vibrant all-over kaleidoscopic print adds a colourful motif to the iconic styling of the Optic Bloom Superstar Track Top. This tricot track jacket comes with a baseball-style collar, front zip, side pockets and a contrast Trefoil on the back.

100% Polyester, tricot, 220g

**AB1986** multicolor

Size 32-44

74,95 €

8 **WOMEN**  
FLORERA - Optic Bloom

APPAREL Q3



AB1976  
deliv.07/15

**FARM LEGGINGS**

The Optic Bloom Leggings make the perfect canvas for a vibrant all-over kaleidoscopic print. These stretchy jersey leggings features a flattering tight fit and a Trefoil graphic detail. 94% Polyester/6% Elasthane, single jersey, 195g

AB1976 multicolor  
Size 30-44

34,95 €



AB1990  
deliv.07/15

**FARM FB TP**

The Water Jungle Firebird Track Pants get 3-dimensional treatment in an all-over optic water jungle print. Made with classic Firebird cutlines and two side pockets, these tricot track pants are styled with sporty 3-Stripes down the legs. 100% Polyester, tricot, 220g

AB1990 multicolor  
Size 30-44

64,95 €

**WOMEN** - FLORERA - Water Jungle



AB1999  
deliv.07/15

**FARM TANK**

The Water Jungle Tank Top gets 3-dimensional treatment in an all-over optic water jungle print. A perfect end-of-summer look, the knitted cotton tank features a sporty racer-back cut with a big adidas Trefoil graphic on the front.

AB1999 multicolor  
Size 32-44

34,95 €



AB1998  
deliv.07/15

**FARM FB TT**

The Water Jungle Firebird Track Top gets 3-dimensional treatment in an all-over optic water jungle print. Made with classic Firebird cutlines and two side pockets, this tricot track jacket is styled with a stand-up collar and contrast Trefoil print on the back. 100% Polyester, tricot, 220g

AB1998 multicolor  
Size 32-44

74,95 €



AB1996  
deliv.07/15

**FARM TEE DRESS**

The Water Jungle Tee Dress gets 3-dimensional treatment in an all-over optic water jungle print. This t-shirt dress is made in soft knitted cotton with a relaxed fit, handy side pockets and a big Trefoil graphic across the front.  
100% Polyester, single jersey, 168g

AB1996 multicolor  
Size 32-44 **49,95 €**



AB1987  
deliv.07/15

**FARM LEGGINGS**

The Water Jungle Leggings step out in a comfy single jersey build with a vivid yet subtle all-over jungle print. The stretchy leggings feature a flattering tight fit and sporty 3-Stripes down the legs.  
94% Polyester/6% Elastane, single jersey, 195g

AB1987 multicolor  
Size 30-44 **34,95 €**

**WOMEN - CITY STORIES - L.A.**



AB2618  
deliv.07/15

**LA LOGO TANK TOP**

The LA Logo Tank Top channels the urban LA vibe with a mix of modal and mesh material in the bottom panel for an upscale sporty style. With heritage adidas colourblocking in the side-printed Trefoils and sleeve trim.  
60% Cotton, single jersey, 120g

AB2618 white  
Size 32-46 **27,95 €**



AB2624  
deliv.07/15

**LA PRINTED TANK TEE**

Sporty with a touch of glam, the LA Printed Tank Tee has two variations of a snakeskin print on the front and back and a contrast Trefoil on the front. Pairs well with the LA Printed Skirt or Printed Leggings.  
100% Polyester, single jersey, 168g

AB2624 multicolor  
Size 32-46 **39,95 €**



AB2629  
deliv.07/15

**LA TRF LOGO PRINTED TEE**

In a modern boxy shape, the LA Trefoil Logo Printed Tee shows off high-contrast colourblocks mixed with two different snake prints on front and back panels. The dropped shoulder sleeves have large printed Trefoils, and the modal-blend construction offers a feminine drape.  
60% Cotton, single jersey, 120g

AB2629 black  
Size 32-46 **34,95 €**



AH8954  
deliv.07/15

**BIG LOGO TEE SNAKE**

This Big Snake Print Tee borrows from the boys with a relaxed boyfriend fit. This jersey t-shirt comes in all-over snakeskin print with a big rubber-print Trefoil on the chest, plus a Trefoil flag label on the left side seam.

100% Polyester, single jersey, 168g

**AH8954** multicolor

Size 32-46

**29,95 €**



AB2095  
deliv.07/15

**BIG LOGO TEE**

This Big Logo Snake Tee borrows from the boys with a relaxed boyfriend fit. This all-cotton t-shirt has a rubber-print Trefoil on the chest filled with a snakeskin graphic, plus a Trefoil flag label on the left side seam.

100% Cotton, single jersey, 140g

**AB2095** black

Size 32-46

**29,95 €**



AB2626  
deliv.07/15

**LA PRINTED W MIX TEE**

Bold cutlines, colourblocking and fresh urban animal graphics bring the LA Printed Mix Tee alive, featuring two different all-over snakeskin prints: one on front and a different one on the back. Big solid-coloured Trefoils on the raglan sleeves add to the dynamic look.

100% Polyester, single jersey, 168g

**AB2626** multicolor

Size 32-46

**29,95 €**



AB2102  
deliv.07/15

**TREFOIL SWEATSHIRT**

Slightly oversized for a drapey look, the Snake AOP Sweatshirt comes in all-over snakeskin-print French terry with a big Trefoil graphic across the chest. The simple silhouette is made with set-in sleeves and a relaxed u-shaped neckline.  
100% Polyester, french terry, 300g

**AB2102** multicolor

Size 32-46

59,95 €



AB2915  
deliv.07/15

**TREFOIL SWEATSHIRT AO**

Slightly oversized for a drapey look, the Snake Trefoil Sweatshirt comes in French terry with a big snakeskin-print Trefoil graphic across the chest. The simple silhouette is made with set-in sleeves and a relaxed u-shaped neckline.

70% Cotton/30% Polyester, french terry, 300g  
80 x 28 x 20 cm

**AB2915** black

Size 32-46

54,95 €



AB2615  
deliv.07/15

**LA CREW SWEATER**

In fresh colourblocking inspired by the adidas sport archives, the LA Crew Sweater captures LA's relaxed urban vibe. Trefoils are printed on the raglan sleeves of this cotton-blend crewneck.  
70% Cotton/30% Polyester, french terry, 300g

**AB2615** tomato f15-st

Size 32-46

64,95 €





AB2614  
deliv.07/15

#### LA CREW PRINTED SWEATER

The LA Crew Printed Sweater captures LA's urban vibe with a mix of snakeskin print and solid colourblocking, with bold Trefoils on the raglan sleeves. In a tricot build with a classic crewneck. 100% Polyester, tricot, 210g

AB2614 black

Size 32-46

64,95 €



AB2633  
deliv.07/15

#### LA VASITY TRACKTOP

The LA Varsity Track Top takes on urban fashion with bold heritage colourblocking, the adidas name stacked up on the front and Trefoils on the sleeves. This track top has a stand-up collar and is lightly padded for a modern update to a shape from the sport archives.

70% Cotton/30% Polyester, french terry, 300g

AB2633 tomato f15-st

Size 32-46

84,95 €



AB2632  
deliv.07/15

#### LA VASITY PRINTED TRACKTOP

Mixing glam with sporty style, the LA Varsity Printed Track Top features a snakeskin print and solid colourblocking, an adidas logo stacked up on front and Trefoils on the sleeves. With a stand-up collar and two front pockets, this tricot track top is lightly padded for a modern take on a shape from the archives.

100% Polyester, tricot, 220g

AB2632 multicolor/black

Size 32-46

84,95 €



AB2096  
deliv.07/15

**FIREBIRD TT**

This Snake AOP Firebird Track Top goes wild with an all-over snakeskin print, while classic 3-Stripes down the sleeves and a sporty stand-up collar echo the original. Features a modern cut, zip pockets, a Trefoil on the chest and a large rubber Trefoil print on the back.

100% Polyester, tricot, 220g

**AB2096** multicolor

Size 32-46

69,95 €



AB2017  
deliv.07/15

**HOODED FLOCK**

The Snake Hooded Flock combines a timeless Originals look with a flash of seasonal print. This zip-up hoodie comes in interlock with a snakeskin print on the hood lining and 3-Stripes. Finished with zip pockets and an embroidered Trefoil on the chest.

87% Polyester/13% Cotton, interlock, 260g

**AB2017** black

Size 32-46

64,95 €



AB2100  
deliv.07/15

**NEW TREFOIL LOGO HOODIE**

The Snake Trefoil Hoodie has a modern feel in French terry with a loose, relaxed fit. This pullover hoodie features set-in sleeves, a big kangaroo pocket and a snakeskin-print Trefoil across the chest.

70% Cotton/30% Polyester, french terry, 300g  
80 x 28 x 20 cm

**AB2100** black

Size 32-46

69,95 €



AB2616  
deliv.07/15

**LA HOODED DRESS**

The LA Hooded Dress pairs a snakeskin print pattern on the shoulder panel and hood with a solid body and contrast Trefoil print on the front for a look that's sporty with a touch of glam. In a shorter length that goes well with leggings, the dress includes a drawstring hood and full-zip front.

**AB2616** black/multicolor  
Size 32-44 **59,95 €**



AB2623  
deliv.07/15

**LA PRINTED TANK DRESS**

Feminine and sporty, the LA Printed Tank Dress flatters in two different snakeskin prints on the front and back. This single jersey dress has a contrast solid Trefoil, deep U-neck and a mesh panel below the racer back.

100% Polyester, single jersey, 168g  
**AB2623** multicolor  
Size 32-44 **49,95 €**



AB2634  
deliv.07/15

**LA PRINT SHORT**

Wildly styled in a snakeskin print, these LA Printed Shorts are framed by solid colour on the sides and a Trefoil above the hem. Made from faux cupro, they have a wide elastic waist with drawstring and two side zip pockets.

100% Polyester, plain weave, 55g  
**AB2634** multicolor  
Size 30-44 **34,95 €**



AB2611  
deliv.07/15

**LA COLOR BLOCK SHORT**

Made from French terry, the LA Colorblock Shorts show off sport archive-inspired colourblocking. They have a drawstring elastic waist, two side pockets, a white tricot side panel and a Trefoil on the hem.

**AB2611** bold blue  
Size 30-44 **34,95 €**



AB2622  
deliv.07/15

**LA PRINT SKIRT**

The LA Printed Skirt puts a snakeskin print on a full skirt for a stylishly feminine shape. Tricot fabric and a logo waist add to this skirt's sporty look.

100% Polyester, tricot, 220g  
**AB2622** multicolor  
Size 32-44 **39,95 €**



AB2612  
deliv.07/15

**LA COLORBLOCK STR LEGGING**

Mesh panels on the hems add to the sporty attitude of the LA Colorblock Stripe Leggings. With the 3-Stripes down the sides and a printed Trefoil on the left leg, these leggings have a pop of colour on the contrast waist.

95% Cotton/5% Elasthane, single jersey, 180g  
**AB2612** bold blue/white  
Size 30-46 **34,95 €**



AB2625  
deliv.07/15

**LA PRINTED STR LEGGING**

Mesh panels on the hems add to the sporty attitude of the LA Printed Stripe Leggings, while the snakeskin print 3-Stripes down the sides add a touch of glam. These leggings have a printed Trefoil on the left leg and an elastic waist.

95% Cotton/5% Elasthane, single jersey, 180g

**AB2625** black/multicolor

Size 30-46

34,95 €



AB2072  
deliv.07/15

**FLOCK TP**

These easy-to-wear Flock Track Pants reinterpret a classic style with added comfort. The regular-fit pants have a wide elastic waist, an inside drawcord, ribbed cuffs and zip pockets on the sides. A snakeskin print on the 3-Stripes and a small Trefoil liven up the legs.

87% Polyester/13% Cotton, interlock, 260g

**AB2072** black

Size 30-46

59,95 €

**WOMEN** - CITY STORIES - Paris



AB2183  
deliv.07/15

**BIG LOGO TEE**

This Big Logo Colored Tee borrows from the boys with a relaxed boyfriend fit. This cotton-blend t-shirt has a multicoloured stitched Trefoil on the chest plus a Trefoil flag label on the left side seam.

100% Cotton, single jersey, 140g

80 x 28 x 20 cm

**AB2183** medium grey heather

Size 32-46

29,95 €



AB2657  
deliv.08/15

**PARIS TRF LOGO TEE**

A big print-filled Trefoil pops with primary colours on the front of the Paris Trefoil Logo Tee. Made from a single jersey cotton-and-modal blend for a soft, feminine shape.

60% Cotton, single jersey, 120g

**AB2657** core white

Size 32-46

29,95 €



AB2649  
deliv.08/15

#### PARIS PRINTED TRF LOGO TEE

A big Trefoil pops on the hand scribbled-style logo print of the Paris Printed Trefoil Logo Tee. Made from a single jersey cotton-and-modal blend for a soft, feminine shape.

60% Cotton, single jersey, 120g

**AB2649** multicolor

Size 32-46

**29,95 €**



AB2637  
deliv.08/15

#### PARIS CROP TEE

A bold Trefoil and 3-Stripes down the sleeves add an adidas sport touch to the Paris Crop Tee. In colours inspired by the archives, this slim-fitting t-shirt has a feminine jewel neckline and is made from cotton single jersey with a touch of stretch.

95% Cotton/5% Elasthane, single jersey, 180g

**AB2637** oxford blue f15-st

Size 32-46

**39,95 €**



AB2641  
deliv.08/15

#### PARIS LOGO CREW SWEATER

Filled with a hand scribbled-style "adidas" print, the front Trefoil pops in primary colours on the Paris Logo Crew Sweater. Ribbed neckline, cuffs and hem finish the soft French terry style.

70% Cotton/30% Polyester, french terry, 300g

**AB2641** core white

Size 32-46

**59,95 €**



AB2189  
deliv.07/15

**TREFOIL SWEATSHIRT**

Slightly oversized for a drapey look, the Colored Trefoil Sweatshirt comes in French terry with a big stitched multicolour Trefoil graphic across the chest. The simple silhouette is made with set-in sleeves and a relaxed u-shaped neckline.

70% Cotton/30% Polyester, french terry, 300g  
80 x 28 x 20 cm

**AB2189** medium grey heather

Size 32-46

**54,95 €**



AB2652  
deliv.08/15

**PARIS PRINTED TT**

Inspired by the Parisian art scene, the handwritten-style "adidas" print fills the Paris Printed Track Top. In a modern shape with stylish wide sleeves, this track top is made in cupro to keep its soft, feminine shape. Features stand-up collar and two front pockets.

100% Polyester, plain weave, 72g

**AB2652** multicolor

Size 32-46

**74,95 €**



AB2651  
deliv.08/15

**PARIS BK LOGO TT**

Made in soft French terry, the Paris Back Logo Track Top features a big print-filled Trefoil on the back and PU-coated single jersey sleeves for added texture. With a stand-up collar, small Trefoil on the chest, front pockets and drawstring on the hem.

70% Cotton/30% Polyester, french terry, 300g

**AB2651** oxford blue f15-st

Size 32-46

**69,95 €**



AB2097  
deliv.07/15

**HOODED FLOCK FLEECE**

The Colored Hooded Flock combines a timeless Originals look with a flash of seasonal print. This zip-up hoodie comes in cosy fleece with a multicoloured print on the hood lining. Finished with zip pockets, white 3-Stripes and an embroidered Trefoil on the chest.

70% Cotton/30% Polyester, fleece, 300g  
80 x 28 x 20 cm

AB2097 medium grey heather

Size 32-46

64,95 €



AB2643  
deliv.08/15

**PARIS PRINTED PLEATED DRESS**

A scribbled "adidas" print pops in primary colours on the sweet pleats of the Paris Printed Pleated Dress. A jewel neckline and mixed fabrics give this dress a crisp look and a feminine shape.

100% Polyester, plain weave, 72g, 60% Cotton, single jersey, 120g

AB2643 core white/multicolor

Size 32-44

59,95 €



AB2639  
deliv.08/15

**PARIS HIGH WAIST LEGGING**

The Paris High Waist Leggings hug feminine curves with a stylishly structured waist in vivid contrast colour. With bright printed 3-Stripes on the sides, these slim-fit leggings are made in cotton with a touch of stretch.

AB2639 oxford blue f15-st

Size 30-46

34,95 €



AB2647  
deliv.08/15

**PARIS PRINTED LEGGING**

The Paris Printed Leggings speak loudly with a scribbled "adidas" print. Solid contrast 3-Stripes on the sides add visual interest, and the single jersey fabric has a touch of elastane for a great fit.

96% Polyester/4% Elasthane, single jersey, 195g

AB2647 multicolor

Size 30-46

34,95 €



AB2650  
deliv.08/15

**PARIS SOLID TP**

The Paris Solid Track Pants feature a stylish material mix with PU-coated single jersey side panels on French terry. With two side pockets and a contrast colour drawstring on the elastic waist.

70% Cotton/30% Polyester, french terry, 300g

AB2650 oxford blue f15-st

Size 30-46

59,95 €



AB2661  
deliv.09/15

**BRLN EDGY STR TEE**

The Berlin Edgy 3-Stripes Tee boldly places the 3-Stripes along the V-neck and adds a Trefoil logo front and centre. With an eye-catching asymmetrical hem, this drapey viscose t-shirt pairs well with leggings.

100% Viscose, single jersey, 150g

**AB2661** white

Size 32-46

**39,95 €**



AB2682  
deliv.09/15

**BRLN LOGO BADGE TEE**

Badge-like logo prints fill the Berlin Logo Badge Tee for a bold take on a great basic. This well-fitted t-shirt has a feminine jewel neckline and contrast back neck trim.

60% Cotton, single jersey, 120g

**AB2682** white

Size 32-46

**29,95 €**



AB2668  
deliv.09/15

**BRLN LOGO PRINTED TEE**

The Berlin Logo Printed Tee is made in a new, unexpected shape with a cut-out pattern of squares for eye-catching texture. Featuring a jewel neckline and a big Trefoil printed on the front.

100% Polyester, plain weave, 203g

**AB2668** black

Size 32-46

**39,95 €**



**BRLN TRF LOGO H NECK TEE**

The Berlin Trefoil Logo High Neck Tee offers a stylishly structured look with a mock turtleneck, a concealed left shoulder zip and a bold contrast Trefoil on the front. The unexpected details continue in the fabric mix: soft single jersey modal for the front and crepe for the back.

100% Polyester, chiffon, 118g, 60% Cotton, single jersey, 120g

**AB2819** black

**AB2670** white

Size 32-46

**34,95 €**



AB2819  
deliv.09/15



AB2670  
deliv.09/15

**BRLN LOGO 3 STR CREW SWEATER**

The 3-Stripes make a bold statement in a fresh new way on the Berlin Logo 3-Stripes Crew Sweater. With a badge-like Trefoil on the chest, this fashion-forward sweater shows off striking contrasts.

70% Cotton/30% Polyester, french terry, 300g

**AB2669** black

Size 32-46

**59,95 €**



AB2669  
deliv.09/15

**BRLN TRF LOGO CREW SWEATER**

With a mix of bold badge-inspired logos, the Berlin Trefoil Logo Crew Sweater has a mock turtleneck, a zip detail on the shoulder and wide sleeves for a look all its own. Made from French terry in a regular fit.

70% Cotton/30% Polyester, french terry, 300g

**AB2659** white

Size 32-46

**64,95 €**



AB2659  
deliv.09/15





AB2679  
deliv.09/15

**BRLN LOGO BADGE TT**

Bold athletic-inspired numerical prints mix with a Trefoil badge on the chest for standout style on the Berlin Logo Badge Track Top. Features iconic track jacket details like a stand-up collar, front pockets, and ribbed neckline, cuffs and hem. 100% Polyester, tricot, 220g

AB2679 black  
Size 32-46

69,95 €



AB2678  
deliv.09/15

**BRLN LOGO 3-STR TT**

The 3-Stripes make a bold statement in a fresh new way on the Berlin Logo 3-Stripes Track Top. With a Trefoil badge on the chest, this fashion-forward track top features a cut-out pattern of squares for eye-catching texture. With a classic stand-up collar and ribbed cuffs. 100% Polyester, plain weave, 203g

AB2678 black  
Size 32-46

89,95 €



AB2671  
deliv.09/15

**BRLN HOODED DRESS**

High contrast reigns supreme with the Berlin Hooded Dress, featuring the 3-Stripes making a bold statement on the front and a hood with a high neck that unzips to expose a pop of contrast colour. Made in French terry with a kangaroo pocket.

70% Cotton/30% Polyester, french terry, 300g

AB2671 black  
Size 32-44

59,95 €



AB2683  
deliv.09/15

**BRLN LOGO LEGGING**

High contrast reigns supreme with the Berlin Logo Leggings, featuring a bold new treatment of the 3-Stripes on one leg. With a big Trefoil printed on the front, these leggings are made in cotton with a touch of elastane for a great fit.

95% Cotton/5% Elastane, single jersey, 180g

AB2683 black/white  
Size 30-46

34,95 €

AB2680  
deliv.09/15**BRLN LOGO 3-STR TP**

High contrast reigns supreme with the Berlin Logo 3-Stripes Track Pants, featuring an unexpected 3-Stripes placement on the cuffs and a pleated high waist. Fashioned from crepe, these pants have front pockets and a small Trefoil.

100% Polyester, chiffon, 118g

**AB2680** black

Size 30-46

**59,95 €**

AB2687  
deliv.09/15**BRLN SLIM FT TP**

Badge-like athletic-inspired graphics dot the Berlin Slim Fit Track Pants for a bold look. The regular-fit track pants are made from French terry and have zippers on the pockets.

70% Cotton/30% Polyester, french terry, 300g

**AB2687** black

Size 30-46

**59,95 €**

AB2685  
deliv.09/15**BRLN LOGO 3-STR SKIRT**

Made in soft crepe for feminine drape, the Berlin Logo 3-Stripes Skirt has an eye-catching asymmetrical hemline. Keeping with iconic style, the 3-Stripes run down each side of the pull-on skirt.

100% Polyester, chiffon, 118g

**AB2685** black

Size 32-44

**49,95 €**

**WOMEN - PREMIUM ESSENTIALS**AB2152  
deliv.07/15AB2151  
deliv.07/15**PE WASHED TEE**

A special wash process gives a one-of-a-kind look to the all cotton Premium Essentials Washed Tee. This short sleeve t-shirt features a large Trefoil graphic on the front.

100% Cotton, single jersey, 160g

**AB2152** dark grey

**AB2151** peach pink f15-st

Size 32-46

**34,95 €**



AB2149  
deliv.07/15



AB2150  
deliv.07/15



**PE WASHED SWEATSHIRT**

A special wash process gives a one-of-a-kind look to the all cotton Premium Essentials Washed Sweatshirt. In a relaxed, easy fit with a dropped shoulder the sweatshirt features a large Trefoil graphic on the front.

100% Cotton, french terry, 270g

**AB2149** dark grey

**AB2150** peach pink f15-st

Size 32-46

64,95 €



AB2147  
deliv.07/15



AB2148  
deliv.07/15



**PE WASHED ZIP HOODIE**

A special wash process gives a one-of-a-kind look to the all cotton Premium Essentials Washed Dress. In a relaxed, easy fit with a dropped shoulder and kangaroo pocket, this full zip hoodie features a large Trefoil graphic on the back.

100% Cotton, french terry, 270g

**AB2147** dark grey

**AB2148** peach pink f15-st

Size 32-46

69,95 €



AB2144  
deliv.07/15

**PE WASHED CUFFED TP**

A special wash process gives a one-of-a-kind look to the all cotton Premium Essentials Washed Cuffed Track Pant. Made with two pockets, easy-wear elastic waistband and cuffs and finished with a Trefoil detail on one side.

100% Cotton, french terry, 270g

**AB2144** dark grey

Size 30-46

59,95 €

**WOMEN** - DENIM



AB2839  
deliv.07/15

**TRACK DENIM SWEATSHIRT**

With a trendy dark blue acid wash, the Denim Sweatshirt has the look of denim and the comfort of soft French terry. Dropped shoulders and a relaxed fit give this sweatshirt a well-loved look from the start. Finished with an iconic oversized Trefoil on front.

90% Cotton/9% Polyamide/1% Elasthane, french terry

**AB2839** dark blue acid dnm  
Size 32-46 **79,95 €**



AB2840  
deliv.07/15

**TRACK DENIM SWEATSHIRT**

With a trendy winter blue wash, the Denim Sweatshirt has the look of denim and the comfort of soft French terry. Dropped shoulders and a relaxed fit give this sweatshirt a well-loved look, updated with an alllover animal pattern and a large laser-print Trefoil on front.

90% Cotton/9% Polyamide/1% Elasthane, french terry

**AB2840** winter blue dnm  
Size 32-46 **79,95 €**



AB2824  
deliv.07/15

**TRACK DENIM CR SPRSTR**

The Denim CLRDO Superstar Track Top takes inspiration from one of our most iconic windbreakers in this new vintage-inspired look. A mix of French terry fabric in solid grey and grey snake print creates a fun colourblocked effect. Finished with a ribbed collar, cuffs and hem, front welt pockets and a Trefoil on the chest.

**AB2824** grey snake dnm  
Size 32-46 **99,95 €**



AB2830  
deliv.07/15

**TRACK DENIM PADDED SPRSTR**

The Denim Padded Superstar Track Top takes inspiration from the iconic track top silhouettes in this new vintage-inspired look. The padded, quilted design is treated to a black-blue vintage wash, then finished with a ribbed collar, cuffs and hem, front welt pockets and a Trefoil on the chest. 90% Cotton/9% Polyester/1% Elasthane, french terry, 10g

**AB2830** black black denim

Size 32-46

114,95 €



AB2825  
deliv.07/15

**TRACK DENIM CUFFED TP**

Comfortably stylish, the new Denim Cuffed Track Pant brings the look of denim to a familiar silhouette. With an easy elastic drawcord waistband and elastic leg cuffs, these track pants are made of denim French terry in a winter blue denim wash, detailed with a Trefoil leather badge on the back waistband.

90% Cotton/9% Polyamide/1% Elasthane, french terry

**AB2825** winter blue dnm

Size 24"-32"

79,95 €



AB2827  
deliv.07/15

**TRACK DENIM CUFFED TP**

Comfortably stylish, the new Denim Cuffed Track Pant brings the look of denim to a familiar silhouette. With an easy elastic drawcord waistband and elastic leg cuffs, these track pants are made of denim French terry in a black-blue denim wash, detailed with a Trefoil leather badge on the back waistband.

90% Cotton/9% Polyamide/1% Elasthane, french terry

**AB2827** black blue vint dnm

Size 24"-32"

79,95 €

**WOMEN - ADICOLOR**



AB2014  
deliv.07/15



AB2079  
deliv.07/15



AB2228  
deliv.07/15



AB2093  
deliv.07/15



**3 STRIPES TEE**

An '80s favourite is back. The 3-Stripes Tee has an easy relaxed fit in cotton single jersey with a ringer collar and sleeve bindings, white 3-Stripes, and a flocked Trefoil on the chest.

100% Cotton, single jersey, 140g  
80 x 28 x 20 cm

**AB2014** black

**AB2079** bold blue

**AB2228** medium grey heather

**AB2093** tomato f15-st

Size 32-46

34,95 €

AB2015  
deliv.07/15AB2083  
deliv.07/15AB2217  
deliv.07/15**BECKENBAUER SWEATSHIRT**

A light, easy pullover, the 3-Stripes Sweatshirt comes in doubleknit material with a relaxed fit. It's finished with 3-Stripes down the sleeves and a flocked Trefoil over the heart.

58% Polyester/42% Cotton, doubleknit, 240g

**AB2015** black

**AB2083** bold blue

**AB2217** tomato f15-st

Size 32-46

**54,95 €**

AB2094  
deliv.07/15**BECKENBAUER SWEATSHIRT**

Inspired by our true classics, the 3-Stripes Sweatshirt shows off heritage style in soft French terry with a relaxed fit. Finished with a flock Trefoil on the chest.

70% Cotton/30% Polyester, french terry, 300g

80 x 28 x 20 cm

**AB2094** medium grey heather

Size 32-46

**54,95 €**

AB2019  
deliv.07/15**TREFOIL SWEATSHIRT**

Slightly oversized for a drapey look, the Trefoil Sweatshirt comes in French terry with a big rubberised Trefoil graphic across the chest. The simple silhouette is made with set-in sleeves and a relaxed u-shaped neckline.

70% Cotton/30% Polyester, french terry, 300g

80 x 28 x 20 cm

**AB2019** black

Size 32-46

**54,95 €**



**AB2013**  
deliv.07/15



**AB2220**  
deliv.07/15



**AB2078**  
deliv.07/15



**3 STRIPE HOODY**

The 3-Stripes Hoodie channels effortless Originals style in a relaxed pull-on shape with an extra-large hood. It's crafted in French terry with a big kangaroo pocket and a Trefoil embroidered on the chest.

70% Cotton/30% Polyester, french terry, 300g  
80 x 28 x 20 cm

**AB2013** black

**AB2220** bold blue

**AB2078** tomato f15-st

Size 32-46

**64,95 €**



**AB2092**  
deliv.07/15



**3 STRIPE HOODY**

The 3-Stripes Hoodie channels effortless Originals style in a relaxed pull-on shape with an extra-large hood. It's crafted in French terry with a big kangaroo pocket and a Trefoil embroidered on the chest.

70% Cotton/30% Polyester, french terry, 300g  
80 x 28 x 20 cm

**AB2092** medium grey heather

Size 32-46

**64,95 €**



**AB2016**  
deliv.07/15



**FIREBIRD TT**

This iconic adidas Originals Firebird Track Top stays true to its roots with the classic 3-Stripes down the sleeves and a sporty stand-up collar. Made in 100% recycled polyester, it comes with zip pockets, a rubber-print Trefoil on the chest and a large contrast Trefoil print on the back.

100% rec.Polyester, tricot, 220g

**AB2016** black

Size 32-46

**69,95 €**





AB2076  
deliv.07/15

**SUPERSTAR TT**

A classic must-have style, the SPRSTR Track Top comes in shiny tricot with all the authentic details, including a ribbed baseball-style collar, contrast 3-Stripes along the raglan sleeves and a rubber-print Trefoil on the back.

100% Polyester, tricot, 220g

AB2076 black  
Size 32-46 **69,95 €**



AB2098  
deliv.07/15

**NEW LEGGINGS**

A snakeskin print gives wild style to these AOP Leggings. Crafted in stretchy single jersey with 3-Stripes down the legs and a tiny Trefoil detail.

94% Polyester/6% Elasthane, single jersey, 195g

AB2098 multicolor  
Size 30-46 **34,95 €**



AB2071  
deliv.07/15

**FIREBIRD TP**

The Firebird Track Pants give the classic Firebird silhouette a modern feel. With an updated fit, they come in tricot with authentic features like 3-Stripes down the legs, a drawcord waist, side pockets and an embroidered Trefoil on the hip.

AB2071 black  
Size 30-46 **64,95 €**



AB2075  
deliv.07/15

**SLIM SUPERGIRL TP**

A stylish pair inspired by the iconic Firebird track pants, the Supergirl Track Pants have a flattering skinny fit in stretchy tricot. These sleek pants are finished with 3-Stripes down the legs and a Trefoil on one side.

AB2075 black  
Size 30-46 **59,95 €**



AB2926  
deliv.07/15

**CHIFFON TRACKPANT**

The Chiffon Track Pants blend a timeless 3-Stripes look with an ultra-light chiffon build and a fashionable dropped crotch. These pants have two side pockets and a tiny Trefoil on one side.

100% Polyester, chiffon, 118g  
AB2926 black  
Size 30-46 **49,95 €**



AB2186  
deliv.07/15

**FLOCK TP FLEECE**

These easy-to-wear Flock Fleece Track Pants reinterpret a classic style with added comfort. The regular-fit fleece pants have a wide elastic waist, an inside drawcord, ribbed cuffs and zip pockets on the sides. White 3-Stripes and an embroidered Trefoil liven up the legs.

70% Cotton/30% Polyester, fleece, 300g  
80 x 28 x 20 cm

**AB2186** medium grey heather

Size 30-46

59,95 €



AB2070  
deliv.07/15



AB2222  
deliv.07/15



**FAKE LEATHER JACKET**

The 3-Stripes Jacket reinterprets the timeless adidas track top in sleek faux leather. This zip-front jacket comes with all the authentic track jacket details, including white 3-Stripes and an embroidered Trefoil on the chest.

100% Polyurethane, leather (imitation)

**AB2070** black

**AB2222** tomato f15-st

Size 32-46

99,95 €

**WOMEN - GRAPHICS**



AB2281  
deliv.07/15



AB2282  
deliv.07/15



**FASHION GRAPHIC SS TEE**

With its larger than life rubber-print branding, the Linear Tee shows its adidas pride in a big, bold way. This loose-fitted tee is made in a soft cotton-blend fabric, with a Trefoil flag label at the side seam.

75% Polyester/13% Cotton/12% Viscose, single jersey, 130g

**AB2281** oxford blue f15-st

**AB2282** core white

Size 32-46

29,95 €



AB8015  
deliv.07/15

AB2288  
deliv.07/15

**FASHION GRAPHIC SS TEE**

A huge, deconstructed Trefoil makes a big impact on the Deconstructed Trefoil Tee. Made in a soft cotton-modal jersey with rolled-up sleeves and a rubber-print adidas wordmark and Trefoil. Regular fit.

60% Cotton, single jersey, 120g

**AB8015** core white/black

**AB2288** core white/multicolor

Size 32-46

**29,95 €**

**WOMEN - WINTER**



AB2885  
deliv.07/15

**MATERIAL MIX VARSITY JACKET**

This Material Mix Varsity Jacket has a wool body and faux leather sleeves for a traditional team look. Includes a front zip and snap-button placket, 3-Stripes tipping on the ribbed hem, sleeves and collar, plus a large rubber-print Trefoil on the back.

**AB2885** black

Size 32-46

**129,95 €**



AB2866  
deliv.08/15

**BOMBER JACKET**

In silky polyester with an allover snakeskin print lining, this Bomber Jacket is cut in the iconic aviator style and finished with a track top-inspired stand-up collar. Details include stretchy elastic at the cuffs, collar and hem, an extra sleeve pocket and a Trefoil on the chest.

100% Polyester, satin, 120g

400 x 800 x 280 cm

**AB2866** st tent green s14

Size 32-46

**119,95 €**



AB2883  
deliv.07/15

**ALL-OVER PARKA**

The all-over animal print, satin-lined hood and snap-button pockets give the All-over Print Parka subtle flair. Details include zigzag stitching at the hood, seam details at the sleeves, a fishtail opening in back and adjustable cuffs and hem. 100% Cotton, plain weave, 245g

AB2883 st major f13/st tent green s14  
Size 32-46

129,95 €



AB4899  
deliv.08/15

**LONG PADDED JACKET**

This Long Padded Jacket cocoons against winter weather in insulated polyester plain weave with a detachable hood. It features an interior mesh pocket, internal tie cord to accentuate the waist and snug flat-knit ribbing at the cuffs. Includes a detachable carrying strap. 100% Polyester, twill, 125g

AB4899 black  
Size 32-46

149,95 €



AB2888  
deliv.08/15



AB2890  
deliv.08/15



AB2889  
deliv.08/15



**WINTER COTTON PARKA**

This Cotton Winter Parka stands up to the cold in sturdy cotton canvas with a soft teddy fleece lining. Designed with elbow patches, a fishtail opening in back and an adjustable interior waistband, it features a detachable hood and zigzag stitching at the collar. 100% Cotton, oxford, 240g

AB2888 black  
AB2890 legend ink s10  
AB2889 fox red f14-st  
Size 32-46

149,95 €



AA7828  
deliv.08/15

**MATERIAL MIX PARKA**

The Matte Mix Parka keeps the chill out of winter with a wool construction and fluffy faux fur lining. With a drapery oversize hood, colourblocked design and two zip pockets.

65% Wool/28% Polyester/3% Polyacrylics/2% Polyamide/2% Viscose, twill, 440g

AA7828 black/dark grey heather  
Size 32-46

179,95 €

MEN - BACK TO SCHOOL



AB7684  
deliv.08/15



AB7685  
deliv.08/15



**TONGUE LABELS TEE**

Stand out and make a statement in the Tongue Labels Tee, a slim-fit tee featuring a bold, colourful graphic pieced together with tongue labels from iconic footwear. Made from 100 percent organic cotton and finished with a woven Trefoil hem label.

100% Organic Cotton, single jersey, 160g

**AB7684** black

**AB7685** medium grey heather

Size XS-2XL

29,95 €



AB7686  
deliv.08/15



**TONGUE LABELS AOP TEE**

Fun, loud and original, the Tongue Labels Allover Print Tee makes a back-to-school statement with its vibrant graphic. The all-over photo print features diagonal cross sections of iconic footwear tongue labels sublimated onto this slim-fit tee.

100% Polyester, single jersey, 168g

**AB7686** black

Size XS-2XL

34,95 €



AB7687  
deliv.08/15



AB7688  
deliv.08/15



**TONGUE LABELS CREW**

Bold, pop colours and a large, pieced-together graphic define the style of the Tongue Labels Crew, featuring artwork inspired by iconic shoe tongue labels. Slim fit on cotton fleece with a woven Trefoil flag label.

70% Cotton/30% Polyester, fleece, 300g

**AB7687** black

**AB7688** medium grey heather

Size XS-2XL

74,95 €



AB7692  
deliv.08/15

**TAPED LABELS SST TRACKTOP**

An exciting original design, the Tape Labels Superstar Track Top features iconic tongue labels from famous adidas shoe styles as the sleeve taping detail. The slim Superstar fit, polyester interlock build, front welt pockets and printed chest Trefoil finish the clean, world famous look. 87% Polyester/13% Cotton, interlock, 260g

**AB7692** black  
Size XS-2XL **84,95 €**



AB7683  
deliv.08/15

**TONGUE LABELS AOP SST**

The fun and colourful Tongue Labels AOP Superstar is energized by an allover photo-sublimation print of famous shoes' tongue labels. The slim Superstar fit, tricot build, front welt pockets and woven side seam Trefoil flag label finish the clean, world famous look. 100% Polyester, tricot, 220g

**AB7683** black  
Size XS-2XL **84,95 €**



AB7690  
deliv.08/15

**TONGUE LABELS HOODY**

Go back to school in bold style in the Tongue Labels Full-Zip Hoodie, a sweatshirt featuring a hood liner and filled Trefoil printed with an allover graphic inspired by iconic shoe tongue labels. Slim fit in a warm fleece blend with a woven Trefoil flag label.

70% Cotton/30% Polyester, fleece, 300g  
**AB7690** black  
Size XS-2XL **84,95 €**

AC0485  
deliv.08/15AC0486  
deliv.08/15**Label Sweat hoody**

With pops of playful colour on the large centre front printed Trefoil and hood lining, the Label Sweat Hoody stands out as it pays homage to the brand's best labels. This cotton and polyester blend pullover features a zigzag taped back right zip pocket and kangaroo front pocket.

70% Cotton/30% Polyester, fleece, 300g

**AC0485** black

**AC0486** medium grey heather

Size XS-2XL

**89,95 €**

AB7693  
deliv.08/15**TAPE LABELS FITTED PANT**

The Tape Labels Fitted Track Pants sport a unique design, with colourful side taping created by combining tongue labels from iconic shoes.

Tapered legs lend modern appeal, with a printed Trefoil and front welt pockets on a poly/cotton tricot blend.

87% Polyester/13% Cotton, interlock, 260g

**AB7693** black

Size XS-2XL

**64,95 €**

AB7695  
deliv.08/15**SLIM LABELS SWEATPANT**

Go back to school in sporty, stand-out style in the Tongue Labels Sweat Pants, with a design inspired by iconic shoe tongue labels. Slim fit in warm cotton fleece, with side zip pockets and Trefoil and "03" silicon badges for a bold pop of colour.

70% Cotton/30% Polyester, fleece, 300g

**AB7695** medium grey heather

Size XS-2XL

**74,95 €**

AB7696  
deliv.08/15**TONGUE LABELS VARIETY JACKET**

Highlighting history's most iconic shoe labels, the Tongue Label Varsity stands out with sports-inspired, eye-catching patches on a classic silhouette. The satin taffeta snap-front jacket features a large embroidered tongue labels patch, an all-over printed lining, plus "03" rubber and basketball patches.

100% Polyamide, taffeta

**AB7696** black

Size XS-2XL

**129,95 €**

**MEN** - BECKENBAUER

APPAREL 03



**AB7473**  
deliv.09/15

**K.O.N.Y TEE**

adidas celebrates its 50-year relationship with Franz Beckenbauer by highlighting the important chapters in his life. Reflective of his time in New York, the NY Tee stands out with a back graphic of "New York" and the NYC skyline featured inside number "6". This 100 percent organic cotton tee comes with a rubber printed adidas Trefoil logo on the left front chest.

100% Organic Cotton, single jersey, 160g

**AB7473** black

Size XS-2XL

**34,95 €**



**AB7464**  
deliv.09/15



**AB7465**  
deliv.09/15



**K.O.N.Y TEE**

adidas celebrates its 50-year relationship with Franz Beckenbauer by highlighting the important chapters in his life. The Slogan Tee pays tribute to "Der Kai5er", Franz Beckenbauer's nickname during his playing days. This regular-fit tee is made with 100 percent organic cotton.

**AB7464** black

**AB7465** white

Size XS-2XL

**39,95 €**



**AB7451**  
deliv.09/15



**AB7452**  
deliv.09/15



**FB PORTRAIT Tee**

adidas celebrates its 50-year relationship with Franz Beckenbauer by highlighting the important chapters in his life. The Franz Beckenbauer Tee honours the German footballer's winning streak with a pixelated Beckenbauer face graphic designed using football championship icons and boldly printed on the front of this 100 percent organic cotton tee.

100% Organic Cotton, single jersey, 160g

**AB7451** black

**AB7452** white

Size XS-2XL

**34,95 €**



AB7478  
deliv.09/15AB7476  
deliv.09/15**K TREFOIL TEE**

adidas celebrates its 50-year relationship with Franz Beckenbauer by highlighting the important chapters in his life. The Kai5er Trefoil Tee presents a merger of classic details and sport styling, with iconic 3-Stripes on the sleeves and a printed "Kai5er" and Trefoil on the front. Offered in bold colours on 100 percent organic cotton.

100% Organic Cotton, single jersey, 160g  
80 x 28 x 20 cm

AB7478 green

AB7476 white

Size XS-2XL

29,95 €

AB7467  
deliv.09/15AB7466  
deliv.09/15**OG POLO JERSEY**

adidas celebrates its 50-year relationship with Franz Beckenbauer by highlighting the important chapters in his life. The slim-fitting NY OG Polo is a 1:1 archival reissue, just like he wore back in the day. This collared V-neck shirt has twill/jersey "6" appliqués on the front, back and sleeve, with an adidas Trefoil sign-off on the chest. An enzyme finish gives a worn-in look.

80 x 28 x 20 cm

AB7467 green

AB7466 white

Size XS-2XL

44,95 €

AB7459  
deliv.09/15**90S DFB JERSEY**

adidas celebrates its 50-year relationship with Franz Beckenbauer by highlighting the important chapters in his life. The DFB Long Sleeve is a 1:1 reissue of the archival football jersey worn during his 1974 victory. It features the DFB badge, a "5" print on the back and "1974" embroidery at the back collar. Slim fitting with 100 percent cotton, a printed adidas Trefoil sign-off completes the design.

100% Cotton, single jersey, 210g

80 x 28 x 20 cm

AB7459 white

Size XS-2XL

44,95 €



AB7454  
deliv.09/15

**FB QUOTE CREW**

adidas celebrates its 50-year relationship with Franz Beckenbauer by highlighting the important chapters in his life. The Munich Crew fits slim on a French terry blend, in a design that pairs solid-colour sleeves with a striped body. Finished with a Trefoil adidas logo in front and the Beckenbauer quote: "the strong one doesn't win; the one that wins is strong" printed on the back. 70% Cotton/30% Polyester, french terry, 300g

**AB7454** white/black

Size XS-2XL

69,95 €



AB7456  
deliv.09/15



AB7455  
deliv.09/15



**TRICOT TT (red/white)**

adidas celebrates its 50-year relationship with Franz Beckenbauer by highlighting the important chapters in his life. The Original Franz Beckenbauer Track Top is inspired by the Bayern Munich Jersey worn by Beckenbauer during the winning 1969 season. In 100% tricot, with an embroidered Trefoil on the left chest, a "1969" back neck graphic, and cut and sewn 3-Stripes down the sleeves.

100% Polyester, tricot, 220g

**AB7456** white/black

**AB7455** white/scarlet

Size XS-2XL

74,95 €



AB7480  
deliv.09/15



**NY KAISER TT**

adidas celebrates its 50-year relationship with Franz Beckenbauer by highlighting the important chapters in his life. The Kaiser NY Track Top honours the footballer's time in NYC with "Kaiser of New York" in twill across the back and a twill "6" on the right chest. Made in double-knit polyester with an embroidered Trefoil on the left chest and 3-Stripes down the sleeves.

52% Cotton/48% Polyester, doubleknit, 290g

**AB7480** black

Size XS-2XL

79,95 €



**K.O.N.Y COACH JKT**

adidas celebrates its 50-year relationship with Franz Beckenbauer by highlighting the important chapters in his life. The Kaiser Jacket brings Der Kaiser's infamous reign on the field to the fashion world. Sports a "Kaiser of New York" twill back graphic, a full, contrast-colour mesh lining, partial elastic cuffs, drawcord hem and snap bottom.

100% Polyester, plain weave, 136g  
400 x 800 x 280 cm

**AB7470** black  
Size XS-2XL **89,95 €**



AB7470  
deliv.09/15



**90S DFB TEE**

adidas celebrates its 50-year relationship with Franz Beckenbauer by highlighting the important chapters in his life. The DFB Tee is inspired by DFB's original German crew from the '90s. This slim-fitting tee features a front and back stripe pattern done in grey shades over a black base, offering a new take on a classic design. Embroidery adds visual pop to the adidas Trefoil logo on front.

100% Cotton, single jersey, 210g

**AB7460** black  
Size XS-2XL **34,95 €**



AB7460  
deliv.09/15



**OG DFB CREW**

adidas celebrates its 50-year relationship with Franz Beckenbauer by highlighting the important chapters in his life. The reissued OG Crew features an original DFB badge on the front with team-coloured stripes and an adidas Trefoil logo. "1990" embroidery on the back neck honours the year Beckenbauer coached Germany to victory. Relaxed fit in a soft French terry blend.

70% Cotton/30% Polyester, french terry, 300g

**AB7461** white  
Size XS-2XL **74,95 €**



AB7461  
deliv.09/15



AB7479  
deliv.09/15

**90S DFB CREW**

adidas celebrates its 50-year relationship with Franz Beckenbauer by highlighting the important chapters in his life. The DFB Crew is inspired by the original '90s jersey, reinterpreting the iconic stripe pattern in a tonal design and finished with adidas embroidery. Sport meets the street in this slim-fit, French terry crew.

70% Cotton/30% Polyester, french terry, 300g  
80 x 28 x 22 cm

**AB7479** medium grey heather  
Size XS-2XL **69,95 €**



AB7472  
deliv.09/15

**90S DFB TT**

adidas celebrates its 50-year relationship with Franz Beckenbauer by highlighting the important chapters in his life. The DFB Graphic Track Top is a modern twist on the classic 1990 football jersey. Tonal 3-Stripes graphics run across the front and back of the full-zip track top. In a doubleknit, cotton-polyester blend with adidas linear graphics on the chest.

52% Cotton/48% Polyester, doubleknit, 290g

**AB7472** black  
Size XS-2XL **74,95 €**

**MEN - SUPERSTAR**



AB9717  
deliv.07/15 **re-order**



AB9715  
deliv.07/15 **re-order**



AB9716  
deliv.07/15 **re-order**



**SST TT**

The streetwise look of the Superstar Track Top gets a sporty update, celebrating the shoe that brings it all together. Retaining the classic Superstar collar and fit, this new version features a cotton-polyester interlock build, piping on the sleeves and seams, two side pockets, and an embroidered Trefoil on the left chest.

87% Polyester/13% Cotton, interlock, 260g

**AB9717** black  
**AB9715** collegiate navy  
**AB9716** jungle ink f15-st  
Size XS-2XL **69,95 €**



AB9706  
deliv.07/15 **re-order**



AB9704  
deliv.07/15 **re-order**



AB9705  
deliv.07/15 **re-order**



**SST CAMO TRACKTOP**

In the Superstar Cuffed Track Pants, a timeless classic gets a contemporary look with a slim fit and new elastic leg cuffs. Made in cotton-poly interlock, these track pants include an embroidered Trefoil on the left thigh and 3-Stripes down the legs, two side pockets, and an interior drawcord for easy adjustment.

87% Polyester/13% Cotton, interlock, 260g

AB9706 black

AB9704 collegiate navy

AB9705 jungle ink f15-st

Size XS-2XL

64,95 €



A97086  
deliv.07/15



A97085  
deliv.07/15



**OPEN HEM SST TP**

87% Polyester/13% Cotton, interlock, 260g

A97086 black/white

A97085 collegiate navy/white

Size XS-2XL

59,95 €



AB9686  
deliv.07/15



AB7673  
deliv.07/15



**FULL ZIP CASUAL SST**

An icon remade for today's streets, the Full Zip Casual Superstar track jacket goes rugged with heavy cotton twill and a closed camo-printed mesh lining. Style points come from the suede leather logo badge, engineered ribs and unmistakable 3-Stripes. Inside pocket and side metal-zip pockets.

100% Cotton, twill, left hand (S)

AB9686 black

AB7673 night cargo f14-st

Size XS-XL

99,95 €



AB7883  
deliv.07/15

**SST WINDBREAKER**

The track top icon breaks into the modern world with this breeze-blocking, lightweight ripstop version, the Superstar Windbreaker. This slim fit jacket has a back vent with bartacks, double welt zip pockets plus flap pockets and keeps its classic profile with the 3-stripes down the sleeves. 100% Polyamide, ripstop, 52g

**AB7883** oxford blue f15-st

Size XS-2XL

79,95 €



AB7670  
deliv.08/15

**SST BOMBER**

Taking a classic style to new heights, the Superstar Bomber Jacket boosts warmth for winter, with substantial padding in the body and sleeves. The heavy duty shell's PU-coating sheds precipitation. Self-fabric badge with logo embroidery and left sleeve zip pocket. 100% Polyamide, plain weave, 187g

**AB7670** black

Size XS-2XL

139,95 €



AB7671  
deliv.08/15

**SST BOMBER CAMO**

Taking a classic style to high altitude, the Superstar Bomber Camo jacket boosts warmth for winter, with substantial padding in the body and sleeves. The heavy duty camo-printed shell's PU-coating sheds precipitation. Self-fabric badge with logo embroidery and left sleeve zip pocket. 100% Polyester, plain weave, 187g

**AB7671** hemp

Size XS-2XL

149,95 €

AB7862  
deliv.08/15AB7860  
deliv.08/15**QUILTED SST**

An insulated version of a sportswear icon, the Quilted Superstar jacket boosts warmth for winter with padding in the body and sleeves plus a soft brushed tricot lining made from the same material as the famous Firebird track top. The quilted, muted taffeta shell and heavy rib trim add style and texture. Stacked embroidered chest logo.

100% Polyester, taffeta, 62g

**AB7862** black

**AB7860** collegiate navy

Size XS-2XL

**99,95 €**

AB7800  
deliv.08/15AB7799  
deliv.08/15**PADDED WOOL VARSITY**

A varsity version of the infamous Superstar jacket, this Padded Wool Varsity jacket warms up a classic silhouette with its wool/polyester twill shell and padding. Engineered rib on the collar and an embroidered Trefoil on the chest enhance the look.

**AB7800** black

**AB7799** midnight f15

Size XS-XL

**149,95 €**

AH5758  
deliv.10/15**DOWN SST**

100% Polyamide, canvas, 175g

400 x 800 x 280 cm

**AH5758** black

Size XS-2XL

**199,95 €**

**MEN** - STAN SMITH



**AB9599**  
deliv.06/15

**STAN SMITH GRAPHIC TEE**

The stylised Stan Graphic Tee features a unique print of Stan Smith's face made out of tennis balls, with his signature at the side. Trefoils at the back neckline and flag label on this slim-fit tee made from 100 percent organic cotton.  
100% Organic Cotton, single jersey, 160g  
80 x 28 x 20 cm

**AB9599** white  
Size XS-2XL **34,95 €**



**AB2476**  
deliv.06/15



**AB2475**  
deliv.06/15



**STAN\_POLO**

Honouring the Stan Smith tennis and sportswear legacy, the clean, iconic Stan Polo uses 100% organic cotton pique for all-natural comfort and a fun bold alllover dot print, original Trefoil chest logo, Stan signature emblem and classic drop hem style.  
100% Cotton, single jersey, 210g

**AB2476** collegiate navy  
**AB2475** white  
Size XS-2XL **44,95 €**



**AB6553**  
deliv.06/15



**STAN\_CREW WOVEN**

Slim fit with an allover dot print and Trefoil embroidery on the front chest, the Stan Crew Woven does the season right, pairing an iconic silhouette with stand-out graphics. 100 percent woven cotton with a Stan Smith signature print on the back. This shirt is part of the Stan Pack.  
100% Cotton, canvas, 219g

**AB6553** collegiate navy/white  
Size XS-XL **79,95 €**





AB2477  
deliv.06/15

**STAN TT**

The clean and iconic style of tennis legend Stan Smith is alive and well in the new Stan Smith Track Top. The slim fitting top features an allover dot print, embroidered Stan Smith signature on back and Trefoil on the chest. Part of the Stan Smith Pack.

100% Polyester, tricot, 220g

**AB2477** collegiate navy/white

Size XS-2XL

**84,95 €**



AC2101  
deliv.06/15

**STAN SST JKT**

100% Polyester, plain weave, 85g

**AC2101** collegiate navy

Size XS-2XL

**89,95 €**



AB9491  
deliv.06/15

**STAN SHORTS**

With grand slam attitude, the Stan Shorts feature a playful allover dots print to complement the cleanest-of-court-shoes look. This woven short sports Stan Smith signature embroidery on the back and has an elastic drawcord waistband and forward side seam.

100% Polyester, plain weave, 125g

**AB9491** collegiate navy

Size XS-2XL

**54,95 €**



AB7839  
deliv.07/15



AB7840  
deliv.07/15



**STREET POCKET TEE**

Bringing a totally new look to the classic pocket tee, the Street Pocket Tee features a new, longer silhouette with a curved back hem and a relaxed fit. Horizontal 3-Stripes and a linear "adidas" logo pop with bold contrast—a stylish mix of fashion and sport.

65% Cotton/35% Polyester, interlock, 160g

**AB7839** black

**AB7840** medium grey heather

Size XS-2XL

39,95 €



AH5760  
deliv.07/15



**STREET POCKET TEE**

65% Cotton/35% Polyester, interlock, 160g

**AH5760** white

Size XS-2XL

39,95 €



AB7849  
deliv.07/15



AB9697  
deliv.07/15



**FOOTBALL JERSEY**

Modernising the cut lines from the original Brion track top, this slim Football Jersey features bold colour blocking mixed with a seasonal snake print. With a polo collar on a V-neck and an interlocked cotton/poly blend.

65% Cotton/35% Polyester, interlock, 160g

**AB7849** white/black

**AB9697** white/collegiate orange

Size XS-2XL

44,95 €

46

MEN  
STREET Pack

APPAREL Q3

**QUARTERBACK JERSEY SNAKE**

Inspired by a classic American football jersey but updated with a seasonal snake print, the colourblocked Quarterback Jersey Snake steps out with a heavy single-jersey build and features three-quarter sleeves with printed 3-Stripes and an "ADIDAS 03" print on the back.

87% Cotton/13% Polyester, single jersey, 210g

**AB7846** medium grey heather

Size XS-2XL

49,95 €

AB7846  
deliv.07/15

**OVERSIZED STREET HOODY**

Blending sport style with a streetwear edge, the Oversized Street Hoodie has a relaxed fit in a pullover design. Twill "ORIGINALS" and Trefoil badges offer brand pride and blended fleece fabric adds warmth. With engineered 3-Stripes on the flat-knit ribbed cuffs and a kangaroo pocket.

70% Cotton/30% Polyester, fleece, 300g

**AB7836** dark grey heather

Size XS-2XL

79,95 €

AB7836  
deliv.07/15

**OVERSIZED STREET HOODY AOP**

A mix of sport style and streetwear edge, the Oversized Street Hoodie Allover Print has a new fit in a pullover design. Twill "ORIGINALS" and Trefoil badges contrast the allover camo print, with engineered 3-Stripes ribbing on the cuffs and a kangaroo pocket in a warm fleece blend.

70% Cotton/30% Polyester, fleece, 300g

**AB8368** hemp

Size XS-2XL

79,95 €

AB8368  
deliv.07/15



AB7817  
deliv.07/15

**STREET SST SNAKE**

adidas adds a seasonal snake print to the Street Superstar Snake Track Top for a stylish new look. Features the classic Super Star collar, 3-Stripes down the sleeves, and an embroidered Trefoil on the left chest. In doubleknit polyester with a slim fit.

100% Polyester, doubleknit, 316g

**AB7817** black

Size XS-2XL

84,95 €



AB7816  
deliv.07/15

**STREET SST CAMO**

Seasonal camo print gives an edge to the iconic Street Superstar Camo Track Top. Features the classic Superstar collar, 3-Stripes down the sleeves, and an embroidered Trefoil on the left chest. In doubleknit polyester with a slim fit.

100% Polyester, doubleknit, 316g

**AB7816** hemp

Size XS-2XL

84,95 €



AB7813  
deliv.07/15

**BRION tracktop SNAKE**

Pulled from the archives, the Brion Track Top Snake is a modern version of the iconic '80s style. Maintaining its original batwing sleeve construction, materials and classic colourblocked style, the polyester jacket is backed by cotton for a soft feel. Updates include a snake-skin graphic and an embroidered linear logo across the front and coil zippers on the center front and two side pockets.

87% Polyester/13% Cotton, interlock, 260g

**AB7813** white/black

Size XS-2XL

89,95 €

AB7820  
deliv.07/15AB7821  
deliv.07/15**LOW CROTCH SWEATPANTS**

Representing an evolution in style, the Low Crotch Sweat Pants blend adidas' sport heritage with street-smart details and a slim, modern fit.

Embroidered Trefoil and engineered 3-Stripes at the ribbed cuffs bring the iconic look, with zip pockets and drawcord on warm fleece.

70% Cotton/30% Polyester, fleece, 300g

**AB7820** black

**AB7821** medium grey heather

Size XS-2XL

**69,95 €**

AB7794  
deliv.07/15AB7793  
deliv.07/15**CUFFED WOVEN CHILL**

Taking adidas sportswear heritage to the streets, these Cuffed Woven Chill Pants bring laid back style to a classic silhouette with a modern, slim fit and casual cotton twill. Elastic cuffs and a drawcord waist offer an easy fit, and an embroidered Trefoil on the back pocket signs off.

100% Cotton, twill, 230g

**AB7794** black

**AB7793** hemp

Size 28"-38"

**79,95 €**

AB7790  
deliv.07/15AB7791  
deliv.07/15**cuffed cargo pants**

Backed by adidas sportswear heritage, these street-savvy Cuffed Cargo Pants tame the urban environment with their modern, slim fit and heavy cotton twill. Features a customizable drawcord waist and woven label on the left cargo pocket.

100% Cotton, twill, 255g

**AB7790** black

**AB7791** st cargo khaki f13

Size 28"-38"

**84,95 €**



AB7780  
deliv.07/15

**cuffed cargo pants AOP**

Backed by unmatched sportswear heritage, these street-savvy Allover Printed Cuffed Cargo Pants tame the urban environment with their modern, slim fit and allover camo-pattern heavy cotton twill. Features a customizable drawcord waist and woven label on the left cargo pocket.

100% Cotton, twill, 255g

**AB7780** multicolor

Size 28"-38"

89,95 €



AB2480  
deliv.07/15

**MARATHON WB**

An evolution for style lovers, the Marathon Windbreaker updates the adidas classic with an allover camo print. Slim cut for a sharp look, it has a ribbed hem and cuffs, two side-zip pockets, an adjustable hood, and a printed linear logo on the left chest. 100% polyester plain weave.

400 x 800 x 280 cm

**AB2480** hemp

Size XS-2XL

69,95 €



AH5754  
deliv.07/15

**HALFZIP HOODED WINDBREAKER**

A new silhouette for a sporty staple, the Halfzip Hooded Windbreaker is ready to hit the streets with confident, straightforward style. This soft weave shell has a centre front and side seam pockets, elastic cuffs and signature printed serrated 3-stripes on the hood.

100% Polyamide, dobby, 84g

400 x 800 x 280 cm

**AH5754** black

Size XS-2XL

79,95 €



**HALFZIP HOODED WINDBREAKER CAMO**

A new look for a sporty staple, the Halfzip Hooded Windbreaker Camo adapts to the urban jungle in confident, straightforward style. This taffeta jacket has a camo-printed upper, centre front and side seam pockets, elastic cuffs and signature printed serrated 3-stripes on the hood.

100% Polyester, taffeta, 82g  
400 x 800 x 280 cm

**AH5757** hemp  
Size XS-2XL **89,95 €**

AH5757  
deliv.07/15



**STREET COACH JKT**

The classic coach jacket from a different angle, the Street Coach Jacket turns a classic silhouette sideways for the street with horizontal 3-Stripes on the left sleeve. Its taffeta body is mesh lined, and has a left inside pocket, hand pockets and printed Trefoil.

100% Polyester, taffeta, 82g  
400 x 800 x 280 cm

**AB7811** black  
Size XS-2XL **79,95 €**

AB7811  
deliv.07/15



**STREET COACH JKT CAMO**

The classic coach jacket from a different angle, the Street Coach Camo Jacket turns a classic silhouette sideways for the street with horizontal 3-Stripes on the left sleeve. Its camo-print, taffeta body is mesh lined, and has a left inside pocket, hand pockets and printed Trefoil.

100% Polyester, taffeta, 82g  
400 x 800 x 280 cm

**AB7809** hemp  
Size XS-2XL **84,95 €**

AB7809  
deliv.07/15



AB7522  
deliv.07/15



AB7520  
deliv.07/15



**ITASCA CREW**

The regular-fit Itasca Crew takes a classic silhouette and fashions it with sporty colour blocking. Done in a variety of stand-out colours and styled through the lens of sport, this French terry sweatshirt features 3-Stripes on the shoulders and linear adidas Trefoil embroidery. 70% Cotton/30% Polyester, french terry, 300g 80 x 28 x 20 cm

**AB7522** black

**AB7520** collegiate navy

Size XS-2XL

59,95 €



AB7506  
deliv.07/15



AB7504  
deliv.07/15



AB7502  
deliv.07/15



**ITASCA TT**

New to the Originals family, adidas introduces the streetwise Itasca Track Top which stands out with modern cut lines and sporty colourblocks. In 100% polyester tricot, it features 3-Stripes down the sleeves and embroidered adidas linear graphics on the front.

100% Polyester, tricot, 220g

**AB7506** black/black

**AB7504** collegiate navy

**AB7502** scarlet

Size XS-2XL

74,95 €



AB8301  
deliv.07/15



AB8300  
deliv.07/15



**open hem TP[S1525M397]**

Slim fit and tapering toward the leg openings, the Open Hem Track Pants reinterpret a classic silhouette. Done in iconic colours with 3-Stripes down the legs and adidas Trefoil embroidery. 100 percent knitted polyester with an elastic waistband.

100% Polyester, tricot, 220g

**AB8301** black

**AB8300** collegiate navy

Size XS-2XL

64,95 €



AB7490  
deliv.07/15AB7492  
deliv.07/15**ITASCA WB**

Ready for the every day street scene, the Itasca WB gives the classic windbreaker some sporty colours and a slim modern fit for timeless appeal. This windbreaker has a one-piece hood, kangaroo pockets, elastic cuffs and signature 3-stripes down the sleeves. Trefoil and linear logo on left chest.

100% Polyester, taffeta, 82g  
400 x 800 x 280 cm

**AB7490** collegiate navy

**AB7492** scarlet

Size XS-2XL

**69,95 €**

**MEN - DENIM**AB8055  
deliv.07/15**FT DENIM CREW**

Made with comfortable French terry fabric, washed for a worn black denim look, the slim-fitting Denim French Terry Crew updates a classic silhouette and features an oversized Trefoil logo on the chest.

90% Cotton/9% Polyamide/1% Elasthane, french terry

**AB8055** worn black dnm

Size XS-2XL

**74,95 €**

AB8054  
deliv.07/15**FT DENIM CREW**

Made with comfortable French terry fabric, washed for a denim look, the slim-fitting Denim French Terry Crew updates a classic silhouette and features an oversized Trefoil logo on the chest.

90% Cotton/9% Polyamide/1% Elasthane, french terry

**AB8054** washed blue

Size XS-2XL

**74,95 €**



AB8059  
deliv.07/15

**FT Denim Superstar**

The French Terry Denim Superstar Track Top brings casual street style and a soft touch to an iconic Superstar build. With a rinsed denim look this track top features front welt pockets, a Trefoil chest logo and the classic Superstar fit.

90% Cotton/9% Polyamide/1% Elasthane, french terry

**AB8059** rinse denim

Size XS-2XL

89,95 €



AB8060  
deliv.07/15

**FT Denim Superstar**

The French Terry Denim Superstar Track Top brings casual street style and a soft touch to an iconic Superstar build. With a washed denim look this track top features front welt pockets, a Trefoil chest logo and the classic Superstar fit.

90% Cotton/9% Polyamide/1% Elasthane, french terry

**AB8060** washed blue

Size XS-2XL

89,95 €



AB8058  
deliv.07/15

**FT DENIM SWEATPANT**

Washed-out French terry with a light scraping effect gives these French Terry Sweat Pants a worn black denim look with laid-back track pants style. Cut slim with front slash pockets, a back patch pocket, a drawcord and elasticised leg cuffs.

**AB8058** worn black dnm

Size XS-2XL

69,95 €



AB8057  
deliv.07/15

**FT DENIM SWEATPANT**

Washed-out, indigo-dyed French terry with a light scraping effect gives the French Terry Sweat Pants a rinsed denim look with laid-back track pants style. Cut slim with front slash pockets, a back patch pocket, a drawcord and elasticised leg cuffs.

90% Cotton/9% Polyamide/1% Elasthane, french terry

**AB8057** washed blue

Size XS-2XL

69,95 €

**5 POCKET PANT**

The comfort of track pants with the look of worn black denim, these French terry Five-Pocket Pants are rinse-washed for an easy, stylish wear. The elasticated waist with belt loops and inside drawcord personalize the carrot fit, with a leather badge sign off on the back pocket.

90% Cotton/9% Polyamide/1% Elasthane, french terry

**AB8063** worn black dnm

**79,95 €**

Size 29-32; 30-32; 31-32;  
32-32; 33-32; 34-32; 36-32;  
29-34; 30-34; 31-34; 32-34;  
33-34; 34-34; 36-34



AB8063  
deliv.07/15

**5 POCKET PANT**

The comfort of track pants with the look of genuine denim, these soft French terry Five-Pocket Pants are rinse-washed for a worn-in look. The elasticated waist with belt loops and inside drawcord personalize the carrot fit, with a leather badge sign off on the back pocket.

90% Cotton/9% Polyamide/1% Elasthane, french terry

**AB8062** washed blue

**79,95 €**

Size 29-32; 30-32; 31-32;  
32-32; 33-32; 34-32; 36-32;  
29-34; 30-34; 31-34; 32-34;  
33-34; 34-34; 36-34



AB8062  
deliv.07/15

**ORIGINALS SLIM DENIM**

An all-over denim photo print on the FT Denim WB adds visual texture to a classic windbreaker. This street-ready style has kangaroo pockets, a one-piece hood, 3-stripes along the sleeves and elastic cuffs. Trefoil and linear logos on left chest.

100% Polyester, taffeta, 82g

400 x 800 x 280 cm

**AB8050** rinse denim

**99,95 €**

Size XS-2XL



AB8050  
deliv.07/15

**MEN - STREET MODERN****OVERSIZED POCKET TEE**

Part of the modern street collection, the Oversized Pocket Tee is a modern take on a classic silhouette. It's made in a thick cotton/poly blend that gives it body and shape, with a boxy fit and a dropped back hem. Finishes include a reflective adidas Trefoil logo and a front kangaroo pocket.

95% Cotton/5% Elasthane, 1 x 1 rib, 350g, 67% Cotton/33% Polyester, doubleknit, 320g

**AB7612** black

**AB7615** medium grey heather

**39,95 €**

Size XS-2XL



AB7612  
deliv.07/15



AB7615  
deliv.07/15



AB7619  
deliv.10/15

**ST MOD BASE LAYER**

The Street Mod Base Layer brings a street edge to sport styling, with cut lines inspired by the iconic Brion track top. Its fitted design has a masked hood for ninja-like coverage on a double-knit cotton/poly blend. Reflective Trefoil and linear adidas logo at the chest.

59% Cotton/41% Polyester, doubleknit, 220g

**AB7619** black

Size XS-2XL

44,95 €



AB7623  
deliv.07/15



AB7624  
deliv.07/15

**ST MOD CREW**

The Street Mod Crew reflects the sport heritage and edgy style of the street modern collection. Done in neutral colours with cutlines inspired by the Brion track top, metal side zips and cut-and-sewn panels distinguish the look. Slim fit in heavy piqué fleece with a reflective adidas Trefoil logo at the left chest.

100% Cotton, pique, 380g

**AB7623** black

**AB7624** medium grey heather

Size XS-2XL

79,95 €



AB7628  
deliv.10/15

**ST MOD HOODY**

Featuring distinct cut-and-sewn lines inspired by the Brion track top, the Street Mod Hoodie offers the style and sport heritage of the street modern collection in a loose, oversized pullover design. A nylon ripstop and French terry fabric mix with reflective adidas Trefoil logo and kangaroo pocket.

100% Polyester, ripstop, 76g, 100% Cotton, french terry, 340g

**AB7628** black

Size XS-2XL

89,95 €

56

MEN  
STREET MODERN

APPAREL Q3

AB7635  
deliv.07/15**ST MOD TRACK JACKET**

Monochrome colours and modern cut lines inspired by the Brion Track Top bring sport and fashion together in the Street Mod Track Jacket. Extra long metal zip pockets, a reflective linear adidas Trefoil graphic and a boxy fit define the modern street style.

67% Cotton/33% Polyester, doubleknit, 320g

**AB7635** medium grey heather

Size XS-2XL

**89,95 €**

AB7625  
deliv.07/15AB7626  
deliv.07/15**LONG LINE FZ HOODY**

The Long Line Full-Zip Hoodie uses the cutlines from the Brion track top to create a distinct look for the street modern collection. Slim fit with a longer body, details include a reflective adidas Trefoil logo and side zip pockets on heavy French terry fabric.

100% Cotton, french terry, 340g

**AB7625** black

**AB7626** medium grey heather

Size XS-2XL

**89,95 €**

AB7632  
deliv.07/15AB7633  
deliv.07/15**FOOTBALLER PANT**

Bringing sportswear to the streets, the Footballer Pants feature modern cut lines on heavy-duty cotton fleece, done in monochrome colours with a Trefoil and linear adidas logo in reflective silver. Fitted design with metal zippers at the tapered legs and internal drawcord.

100% Cotton, pique, 380g

**AB7632** black

**AB7633** medium grey heather

Size XS-2XL

**79,95 €**



AB7610  
deliv.07/15

**PONCHO WINDBREAKER**

Modernizing the classic windbreaker, the oversized, coated polyester woven Poncho Windbreaker incorporates reflective details and metallic hits for a fashion forward impression. Details include side seam zips, metal pouch pocket zips, reflective adjustable cuffs and reflective linear adidas and Trefoil logos. 100% Polyester, plain weave, 130g 400 x 800 x 280 cm

AB7610 black  
Size XS-2XL

124,95 €



AB7611  
deliv.07/15

**REFLECTIVE CAMO PONCHO**

Make a bold street statement in the Reflective Camo Poncho Windbreaker, a modern take on the classic jacket. This oversized windbreaker uses reflective material with a subtle camouflage print and metallic hits at the side seams and pouch pocket zips. Reflective adjustable cuffs, linear adidas and Trefoil logos. 100% Polyester, plain weave, 204g 400 x 800 x 280 cm

AB7611 reflective gray-sld  
Size XS-2XL

199,95 €



AB7638  
deliv.10/15

**ST MOD PADDED PARKA**

How sportswear meets street fashion is all in the details with the Street Mod Padded Parka, an unexpected way to heat up in the cold. The asymmetrical zip, high collar and slim fit of the cotton blend dobby shell give warmth a modern profile, and a reflective linear logo attracts even more attention.

100% Cotton, canvas, 280g

AB7638 black  
Size XS-2XL

169,95 €

MEN - PREMIUM ESSENTIALS



AB7578  
deliv.07/15



AB7576  
deliv.07/15



AB7579  
deliv.07/15



PE TEE

High-end materials and attention to detail make the Premium Essentials Tee a must-have piece. Cotton fleece is cut slim with repositioned seams for a new fit and an embroidered Trefoil on the chest. Done in neutral colours for versatile styling.

100% Cotton, single jersey, 150g  
80 x 28 x 20 cm

AB7578 collegiate navy

AB7576 premium dark mel

AB7579 white

Size XS-2XL

29,95 €



AB7568  
deliv.07/15



AB7566  
deliv.07/15



AB7567  
deliv.07/15



PE CREW

The Premium Essentials Crew sweatshirt pairs pinnacle fleece style with a sportswear edge. Made with premium French terry fabric in a range of neutral colours, this slim-fit sweatshirt features side seam pockets and an embroidered Trefoil at the chest.

100% Cotton, french terry, 420g  
80 x 28 x 21 cm

AB7568 collegiate navy

AB7566 premium dark mel

AB7567 premium light mel

Size XS-2XL

69,95 €



AB7569  
deliv.07/15



AB7571  
deliv.07/15



PE HOODY

Made with soft French terry in fresh seasonal colours, the slim-fit Premium Essentials Hoodie represents the pinnacle of sport-inspired style. Features a kangaroo pocket, updated seams and a woven Trefoil label above the bottom left hem.

100% Cotton, french terry, 420g  
80 x 28 x 22 cm

AB7569 collegiate navy

AB7571 premium light mel

Size XS-2XL

79,95 €



AB7564  
deliv.07/15



AB7565  
deliv.07/15



AB7562  
deliv.07/15



AB7563  
deliv.07/15



**PE SWEATPANT**

The Premium Essentials Sweat Pants are an all-time classic matched with premium materials and fresh seasonal colours. Made from heavy-duty French terry, they feature interior elasticated cuffs and a slim fit, plus classic front slash pockets and a drawcord waist.

100% Cotton, french terry, 420g  
80 x 28 x 22 cm

**AB7564** black

**AB7565** collegiate navy

**AB7562** premium dark mel

**AB7563** premium light mel

Size XS-2XL

69,95 €

**MEN - ESSENTIALS**



AB7588  
deliv.07/15



AB7586  
deliv.07/15



AB7587  
deliv.07/15



**SPO FZ**

The Sport Essentials Full-Zip Hoodie gets special detailed attention this season with thicker fleece, heathered 3-Stripes and a modern slim fit. Includes kangaroo pockets, a full zip and a printed Trefoil on the left chest.

70% Cotton/30% Polyester, fleece, 300g  
80 x 28 x 22 cm

**AB7588** black

**AB7586** collegiate navy

**AB7587** medium grey heather

Size XS-2XL

59,95 €



AB7582  
deliv.07/15



AB7580  
deliv.07/15



AB7581  
deliv.07/15



**SPO SWEAT PANT**

Made with a plush cotton fleece in a tailored slim fit that's brushed for warmth, the Sport Essentials Sweat Pant raise the bar for casual sportswear staples. Features a Trefoil print on the left leg, an exterior drawcord and an enzyme finish for a well-worn look.

80 x 28 x 22 cm

**AB7582** black

**AB7580** collegiate navy

**AB7581** medium grey heather

Size XS-2XL

54,95 €



**MEN** - GRAPHICS



AB9537  
deliv.07/15



AB9538  
deliv.07/15



AB9536  
deliv.07/15



**TREFOIL FILL T**

A cut-up pattern made with pieces of iconic shoe tongue labels fills the large Trefoil and linear adidas logo of the Trefoil Fill Tee for big, bold style. Regular fit in 100 percent organic cotton. 100% Organic Cotton, single jersey, 160g

- AB9537 black
  - AB9538 bluebird
  - AB9536 white
- Size XS-2XL **27,95 €**



AB9603  
deliv.07/15



AB9604  
deliv.07/15



AB9602  
deliv.07/15



**SNAKE LABEL TEE**

Executed in a seasonal snake pattern foil print, the Snake Label Tee takes the look of an iconic tongue label and transforms it into a bold graphic. Slim fitting in 100 percent organic cotton with a Trefoil flag label at the side seam. 100% Organic Cotton, single jersey, 160g

- AB9603 black
  - AB9604 bluebird
  - AB9602 white
- Size XS-2XL **29,95 €**



AB9606  
deliv.07/15



AB9605  
deliv.07/15



**CAMO LABEL TEE**

The Camo Label Tee takes the look of an iconic tongue label and transforms it into a bold graphic. Featuring a camo pattern filled tongue label print with a flocked Trefoil and adidas logo for slight texture. Slim fitting in 100 percent organic cotton. 100% Organic Cotton, single jersey, 160g

- AB9606 black
  - AB9605 white
- Size XS-2XL **29,95 €**



AB9590  
deliv.07/15



AB9589  
deliv.07/15



**SNAKE BODY TEE**

A snake pattern-filled Trefoil on the front chest of the Snake Body Tee hints at the big, bold back graphic—a coiled snake marked with the slogan “THE BRAND WITH THE 3 STRIPES”. Slim fit in 100 percent organic cotton.

**AB9590** black

**AB9589** white

Size XS-2XL

34,95 €



AB9556  
deliv.07/15



AB9557  
deliv.07/15



AB9555  
deliv.07/15



**COURT TREFOIL T**

The Court Trefoil Tee features a large Trefoil and linear adidas logo in contrast colours backed by a black and white photoprint of an outdoor basketball court. Trefoil flag label at the side seam tags this regular-fit tee made from 100 percent organic cotton.

100% Organic Cotton, single jersey, 160g

**AB9556** black

**AB9557** bluebird

**AB9555** white

Size XS-2XL

29,95 €



AB9559  
deliv.07/15



AB9558  
deliv.07/15



**VIBRANT CITY TEE**

The Vibrant City Tee takes a colourful photoprint of a city and deconstructs it into bold 3-Stripes, with a linear adidas logo on the chest of this regular-fit, 100 percent organic cotton tee.

100% Organic Cotton, single jersey, 160g

**AB9559** black

**AB9558** white

Size XS-2XL

29,95 €

AB9541  
deliv.07/15AB9540  
deliv.07/15**MULTI WAVE TEE**

The Multi Wave Tee creates a colourful, landscape-like design using multi-coloured waves, with a contrast Trefoil centred in front of this regular-fit tee. Made from 100 percent organic cotton.

100% Organic Cotton, single jersey, 160g

**AB9541** black

**AB9540** white

Size XS-2XL

**29,95 €**

AB9584  
deliv.07/15AC1789  
deliv.07/15AB9583  
deliv.07/15**Originals Girl tee**

Displaying eye-catching style, the Originals Girl Tee features a mirrored photoprint of a sporty girl holding a baseball bat. With Trefoil and iconic "1972" graphics on the back neckline of this regular-fit cotton tee.

100% Organic Cotton, single jersey, 160g

**AB9584** black

**AC1789** medium grey heather

**AB9583** white

Size XS-2XL

**29,95 €**

AB9586  
deliv.07/15AB9585  
deliv.07/15**45 SST TEE**

Style like a champ in the 45 SST Tee, a slim-fit tee made from 100 percent organic cotton. A printed graphic of the shoe's iconic shell toe cap is displayed on the chest, with a line art-like pair of adidas Superstars hanging from a bold "45" on the back.

**AB9586** bold blue

**AB9585** white

Size XS-2XL

**34,95 €**



**SST GRAPHIC TEE**  
 The adidas Superstar shoe graphic and its iconic name are deconstructed on the front of this Superstar Graphic Tee. The design is rendered in contrast colours, with a Trefoil executed in a silicone print. 100 percent organic cotton with a regular fit.  
 100% Organic Cotton, single jersey, 160g

---

**AB9561** black  
**AB9562** scarlet  
**AB9560** white  
 Size XS-2XL **29,95 €**



**TOWN TEE**  
 100% Organic Cotton, single jersey, 160g

---

**AH9788** black  
**AH9787** white  
 Size XS-2XL **29,95 €**



**RETRO CATALOG TEE**  
 100% Organic Cotton, single jersey, 160g

---

**AH9792** black  
**AH9791** white  
 Size XS-2XL **29,95 €**

AH9086  
deliv.07/15AH9085  
deliv.07/15**FLORAL LABEL TEE**

100% Organic Cotton, single jersey, 160g

AH9086 black

AH9085 white

Size XS-2XL

29,95 €

AH9088  
deliv.06/15AH9087  
deliv.06/15**MULTI COLOR TEE**

100% Organic Cotton, single jersey, 160g

AH9088 collegiate navy

AH9087 white

Size XS-2XL

34,95 €

AA5386  
deliv.06/15**Porsche To Be Driven T-Shirt**

The To Be Driven Tee pays tribute to celebrated automotive engineer Ferdinand Porsche, combining his quote ("Our cars are meant to be driven. Not polished.") and an authentic motorsport-inspired graphic. Cut for a slim fit in pure cotton jersey.

100% Cotton, single jersey, 180g

AA5386 white

Size XS-2XL

39,95 €

AA5389  
deliv.06/15**Porsche 1969 Graphic T-Shirt**

The 1969 Tee celebrates the 908, a sleek, aggressive sports car that sparked Porsche's most successful racing era. The pure cotton t-shirt is cut for a slim fit and features an authentic motorsport-inspired graphic.

100% Cotton, single jersey, 180g

AA5389 core white

Size XS-2XL

39,95 €



AB9607  
deliv.07/15

**STREET LOGO**

Celebrate adidas pride with the Street Logo Tee, a regular-fit t-shirt made from 100 percent organic cotton. Bold 3-Stripes, adidas Trefoil and adidas Originals graphics adorn the front, back and sleeves, with the slogan "the brand with the 3-Stripes" printed in English, German and French at the front hem.

100% Organic Cotton, single jersey, 160g

**AB9607** black

Size XS-2XL

34,95 €



AB9577  
deliv.07/15

**STREET LOGO CREW**

Featuring bold graphics that pop with stunning contrast, the Street Logo Crew offers a slim fit in a soft fleece. Graphics include adidas Trefoils on the right sleeve and front, "ORIGINALS" and a large brand seal on back, and 3-Stripes on the left sleeve.

70% Cotton/30% Polyester, fleece, 300g

**AB9577** black

Size XS-2XL

69,95 €



AB9572  
deliv.07/15

**STREET LOGO SWEATPANT**

Slim fitting and styled for the street, the Street Logo Sweat Pants bring energy to a sporty, casual look. Vertical "ORIGINALS", bold Trefoil and brand seal plus 3-Stripes on the back pocket drive excitement for this core fleece piece.

70% Cotton/30% Polyester, fleece, 300g

**AB9572** black

Size XS-2XL

69,95 €

AH9083  
deliv.07/15AH9084  
deliv.07/15**STREET LOGO SWEATPANT**

70% Cotton/30% Polyester, french terry, 300g

AH9083 black

AH9084 medium grey heather

Size XS-2XL

69,95 €

AB9581  
deliv.07/15AB9579  
deliv.07/15AB9580  
deliv.07/15**SERRATED GRAPHIC TEE**

The Serrated Graphic Tee uses striking colours in a blocked design highlighted by stand-out graphics. A serrated line creates bold contrast, with horizontal 3-Stripes at the hem, a linear adidas Originals graphic on back and Trefoils on the front chest and flag label.

100% Organic Cotton, single jersey, 160g

AB9581 white/hemp

AB9579 white/collegiate orange

AB9580 medium grey heather

Size XS-2XL

34,95 €

AH9742  
deliv.07/15AH9743  
deliv.07/15**SERRATED GRAPHIC HOODY**

70% Cotton/30% Polyester, french terry, 300g,

70% Cotton/30% Polyester, french terry, 300g

AH9742 black/medium grey heather

AH9743 medium grey heather/oxford blue  
f15-st

Size XS-2XL

79,95 €



AB7795  
deliv.08/15

**STRM65**

A classic, collegiate staple revisited for winter, the ST-M-65 jacket heats on the street with a detachable Sherpa fleece lining and stowaway hood. A heavy rib on the sleeves, antique metal silver zips, suede leather logo badge, adjustable drawcord waist, plus tonal stitched 3-Stripes cuffs add style points.

AB7795 black  
Size XS-XL

199,95 €



AH5751  
deliv.10/15

**DOWN PARKA**

With meticulous detail, the Down Parka transforms a long sports heritage into signature winter street warmth. The rugged nylon/canvas shell has a camo-print taffeta lining, cosy duck down fill and an adjustable hood with a suede leather stacked logo badge on the left arm. 100% Polyamide, canvas, 175g

AH5751 black  
Size XS-2XL

279,95 €



AB3200  
deliv.07/15

**GONZ SHMOO FOIL TEE**

Featuring Gonz's hand-drawn riff on this season's "no borders" flag print, this everyday tee brings to life MG's custom Shmoo Foil graphic on soft-wearing, durable cotton.

100% Cotton, single jersey, 140g

AB3200 black  
Size XS-2XL

29,95 €



**TEAM 3 TEE**

Three stripes, not 3 strikes—'cause there's no such thing as striking out on your skateboard. The men's Team 3 Tee is built from soft-wearing, durable cotton for supreme everyday comfort.

100% Cotton, single jersey, 140g

**AB7928** black

Size XS-2XL

**29,95 €**

AB7928  
deliv.07/15

**DUSK 2 DARKNESS TEE**

Skate—even when the weather tells you not to. The dark and stormy Northwest skies over adidas Skateboarding headquarters inspired the moody textural print on this soft, durable, and comfortable tee shirt built from 100% cotton.

100% Cotton, single jersey, 140g

**AB7934** midnight f15/black

Size XS-2XL

**39,95 €**

AB7934  
deliv.07/15

**FLAG ARMY JERSEY**

With a nod to the classic soccer jersey, we built a cool-wearing tee shirt for heated sessions. The "no borders" flag-inspired graphic celebrates skateboarding as the world's true universal language.

100% Polyester, interlock, 175g

**AB7954** midnight f15/bright orange

Size XS-2XL

**39,95 €**

AB7954  
deliv.07/15



AB7926  
deliv.10/15

**TRIPLE LOCK UP HENLEY**

Landing a new trick is how skaters hit a home run, and that's exactly what the Triple Lock Up Henley was built for. A premium patch and Henley-style 3-button neckline evoke America's favorite pastime, while a rich heathered-slab fabric lends a high-end feel to this vintage-baseball-inspired style.

53% Polyester/47% Cotton, single jersey, 125g

**AB7926** core heather/collegiate burgundy  
Size XS-2XL **29,95 €**



AH9902  
deliv.07/15

**COBRAH TEE**

100% Cotton, single jersey, 140g

**AH9902** collegiate red/oxford blue f15-st  
Size XS-2XL **34,95 €**



AB7931  
deliv.07/15

**SHMOO SHADOW TEE**

A lighthearted nature makes everything easier—even gravity-defying frontside wallrides. Featuring a photo-driven take on Gonz in his element, the Shmoo Shadow Tee is built from soft-wearing, durable cotton for supreme everyday comfort. Original photo by Bryce Kanights.

100% Cotton, single jersey, 140g

**AB7931** white  
Size XS-2XL **29,95 €**

70

MEN  
ACTION SPORTS

APPAREL Q3

**TRIPLE LOCK UP POCKET TEE**

A pristine pocket tee that can handle four-wheeled hijinks, this soft-wearing, durable cotton shirt features a custom collage print on the pocket blending national flags from around the world—an homage to universal language of skateboarding.

100% Cotton, single jersey, 140g

**AB3206** white

Size XS-2XL

**29,95 €**AB3206  
deliv.07/15**AS PREMIUM BUTTON UP**

A sharp-dressed chambray shirt with a premium feel, this men's woven button up supplies tons of functional style thanks to a thoughtful construction and a crisp-all over print comprised of tiny white flags.

**AB7986** carbon s14/white

Size XS-2XL

**69,95 €**AB7986  
deliv.07/15**DUSK 2 DARKNESS AOP CREW**

A classic crewneck sweatshirt with a darkside, the D2D AOP Crew sports a moody textural all-over print that channels the dark and stormy Northwest skies over adidas Skateboarding headquarters. It's built from a cotton-poly blend fleece that's soft-wearing, warm, and durable.

70% Cotton/30% Polyester, fleece, 240g

**AB7966** midnight f15/black

Size XS-2XL

**64,95 €**AB7966  
deliv.07/15



AH9911  
deliv.07/15

**COBRAH HOODIE**

70% Cotton/30% Polyester, fleece, 240g

**AH9911** core heather

Size XS-2XL

69,95 €



AB7965  
deliv.07/15

**PREMIUM MOCK ZIP**

Rugged and toasty, this workwear-inspired sweatshirt packs serious warmth and way more style than your average hoodie. Soft sweater knit in heathered grey gets a toasty microfleece lining that feels all warm and fuzzy against your skin, while the chunky brass half zip and beefy twill drawcords lend a tough, get 'er done strength and style.

100% Polyester, polarfleece, 300g

**AB7965** core heather

Size XS-2XL

69,95 €



AB7956  
deliv.07/15

**AS PREMIUM HOODY**

Our premium riff on a lightweight Henley pullover, the men's Premium Hoodie sports an easy-wearing button-down collar and cool color blocking, which plays with different sides of the same fabric for a tonal take on stripes.

100% Polyester, jacquard, 220g

**AB7956** fade ink f15-st/core heather

Size XS-2XL

69,95 €

AB8370  
deliv.07/15AB8369  
deliv.07/15**ACTION SPORTS HOODED TRACK JACKET**

Our take on the classic Track Jacket in soft-wearing smooth-faced fleece, the Hooded Track Jacket supplies classic style from wind sprints to Smith grinds, featuring a longer, modern cut for better coverage with raglan sleeves for great fit and mobility.

70% Cotton/30% Polyester, fleece, 240g

**AB8370** black

**AB8369** core heather/fade ink f15-st

Size XS-2XL

**84,95 €**

AB8371  
deliv.10/15**ACTION SPORTS TRACK JACKET**

Our take on the classic Track Jacket supplies classic style from wind sprints to Smith grinds, featuring a longer, modern cut for better coverage in a traditional polyester fabrication with raglan sleeves for great fit and mobility. The CLIMALITE® construction supplies quick-drying, sweat wicking, and performance.

100% Polyester, tricot, 199g

**AB8371** black

Size XS-2XL

**69,95 €**

AB7950  
deliv.07/15**COACHES JACKET 2.0**

A classic coach's jacket—but more rugged, this lightweight outer layer will make your next cold-weather curb session a more manageable affair. The Coach's Jacket is crafted from a sturdy heathered plain weave featuring a weather-fighting DWR coating, with a full-front zip entry and drawstring adjustability at the hem for sealing out cold air.

100% rec.Polyester, plain weave, 101g

**AB7950** black

Size XS-2XL

**69,95 €**



AB7945  
deliv.07/15

**WIND JACKET 2.0**

Lightweight protection for shredding through showers, the men's Wind Jacket 2.0 sports a DWR coating to keep you dry and a longer cut with a curved hemline for bonus coverage. Drawstring adjustability at the hood and hemline lets you dial in your fit on the fly.

100% rec.Polyester, plain weave, 110g

**AB7945** black

Size XS-2XL

64,95 €

**JUNIORS - GIRLS**



AB2239  
deliv.07/15

**J SS TEE**

In a girly fit just like the grown-up version, the Junior Jungle Tee prominently places a rubber print Trefoil on the front and fills it with adidas Superstar shoe details, diamonds and flowers. Made in all cotton with a rounded longer back.

100% Cotton, single jersey, 160g

**AB2239** white/bold blue

Size 92-170

21,95 €



AB2234  
deliv.06/15

**J SS LEGGINGS**

adidas brings the grown-up streetwise style to girls with the Junior Jungle Leggings. The all-over print features adidas Superstar shoe details, diamonds and flowers. These elastic waistband leggings have a vertical Trefoil and logo on the left leg.

96% Polyester/4% Elasthane, single jersey, 195g

**AB2234** bold blue/white

Size 92-170

24,95 €



AB2229  
deliv.06/15

**J SS HFL TOP**

An eclectic print of adidas Superstar shoe details, diamonds and flowers fills the Junior Jungle Hooded Fleece Top made just for girls. adidas adds to the bold print with a contrast Trefoil on the front, white pockets and hood lining finish the look.

100% Polyester, single jersey, 230g

**AB2229** bold blue/white

Size 92-170

54,95 €

**JUNIORS** - BOYS



**J SW ATAT TEE**

The mighty AT-AT makes its way across the Junior Star Wars™ AT-AT Tee with an allover lenticular print that creates a 3D effect. In all-cotton construction, the tee has a high-density logo combining Star Wars™ and adidas for added colour pop and texture.

100% Cotton, single jersey, 160g

**AB2252** granite/black

Size 92-176

**24,95 €**

AB2252  
deliv.06/15



**J SW ATAT TOP**

The mighty AT-AT and 3-Stripes join forces on the Star Wars™ AT-AT Track Top. An allover lenticular print creates a 3D effect on classic adidas tricot construction. The iconic top features zip front and pockets, ribbed cuffs and waist, and a high-density Star Wars™ and adidas logo for added colour pop and texture.

100% Polyester, tricot, 220g, 100% Polyester, tricot, 220g

**AB2257** black/granite

Size 92-176

**57,95 €**

AB2257  
deliv.06/15



**J SW MF TEE**

A spaceship like no other, the Millennium Falcon flies across the Star Wars™ Millennium Falcon Tee in the combined Star Wars™ and adidas screenprint. A contrast logo label on the left sleeve adds a bit of colour.

100% Cotton, single jersey, 160g

**AB2253** white

Size 92-176

**24,95 €**

AB2253  
deliv.06/15



AB2246  
deliv.06/15

**J SW MF HOODIE**

The Junior Star Wars™ Millennium Falcon Hoodie features an all-over print of the Millennium Falcon and Star Wars™ lettering for a forceful style. Created from comfy fleece with 3-Stripes™ down the arms and a high-density Star Wars™ and adidas logo on the chest.

80% Cotton/20% Polyester, fleece, 270g

**AB2246** black/bluebird

Size 92-176

54,95 €



AB2247  
deliv.09/15

**J SW ARCHIVE T**

The Junior Star Wars™ Archive Tee places a label-inspired direct photo screenprint on the front with a Star Wars™ background and a "Brand with the 3-Stripes" adidas label superimposed on top. All-cotton construction with a contrast combined logo on the left sleeve.

100% Cotton, single jersey, 160g

**AB2247** white

Size 92-176

24,95 €



AB2265  
deliv.09/15

**J SW ARCHIVE FB**

Darth Vader, Luke Skywalker and a light saber prominently take their place on the all-over print of the Junior Star Wars™ Archive Firebird Top. With 3-Stripes™ down the arms and the classic tricot construction, this track top combines two powerful forces displayed in the Star Wars™ Trefoil left chest logo. Features zip front and pockets.

100% Polyester, tricot, 220g

**AB2265** multicolor/black/white

Size 92-176

57,95 €



INFANTS



**I SW ATAT TEE**

Little Star Wars™ fans will love the Infant Star Wars™ ATAT Tee. Made in single jersey, it shows off a front graphic of an AT-AT Walker with a Trefoil.

100% Cotton, single jersey, 160g

**AB1839** white  
Size 62-104 **21,95 €**



AB1839  
deliv.06/15



**I SW ATAT FB**

Little Star Wars™ fans will love the Infant Star Wars™ ATAT Firebird Track Suit. An '80s legend, the Firebird track suit shows off an alllover graphic of a Star Wars™ AT-AT Walker.

**AB1847** lgh solid grey  
Size 62-104 **54,95 €**



AB1847  
deliv.06/15



**I SW MF TEE**

Little Star Wars™ fans will love the Infant Star Wars™ Millennium Falcon Tee. Made in single jersey, it shows off a front graphic of Hon Solo's Millennium Falcon starship.

100% Polyester, single jersey, 168g

**AB1841** multicolor  
Size 62-104 **21,95 €**



AB1841  
deliv.06/15



**I SW MF HFL**

Little Star Wars™ fans will love the Infant Star Wars™ Millennium Falcon Hooded Flock. Made in cosy fleece, this two-piece set features a Millennium Falcon graphic on the back and inside the hood.

**AB1844** black/white  
Size 62-104 **54,95 €**



AB1844  
deliv.06/15



AB1845  
deliv.09/15

**I SW ARCHIVE FB**

Little Star Wars™ fans will love the Infant Star Wars™ Archive Firebird set. Made in cosy fleece, the hoodie top shows off an allover graphic of Hon Solo's Millennium Falcon starship.

100% Polyester, tricot, 220g, 100% Polyester, tricot, 220g

**AB1845** multicolor/black/white

Size 62-104

**54,95 €**

**FOOTWEAR Q3**



S81350  
deliv.08/15



S81351  
deliv.08/15

**Superstar UP Strap W**

Stepping out with a cool street vibe, the adidas Originals Superstar Up Strap comes in leather with patent 3-Stripes and a hidden wedge heel. Features a padded strap across the front, an oversize tongue and a rubber cupsole.

LEATHER/SYNTHETICS

**S81351** ftwr white/ftwr white/core black

**S81350** core black/core black/ftwr white

Size 3.5-9.5

104,95 €



S81377  
deliv.07/15

**SUPERSTAR UP W**

The iconic '70s adidas Superstar gets a fresh feminine update in the adidas Originals Superstar Up. The court shoe has a 4 cm inner wedge, a leather upper with polka-dot print and patent 3-Stripes, a Trefoil print on the leather tongue, and a rubber cupsole.

LEATHER/SYNTHETICS

**S81377** core black/core black/ftwr white

Size 3.5-9.5

99,95 €



S77408  
deliv.07/15

**SUPERSTAR RIZE W**

The adidas Originals Superstar Rize gives the iconic sneaker a whole new vantage point with a rubber platform outsole. In snakeskin print suede with synthetic leather details, matching 3-Stripes and a mesh lining. Part of the Walk of Snake pack.

LEATHER/SYNTHETICS

**S77408** core black/core black/tomato f15-st

Size 3.5-9.5

99,95 €



S82568  
deliv.07/15



S82570  
deliv.07/15

**SUPERSTAR RIZE W**

The adidas Originals Superstar Rize gives the iconic sneaker a whole new vantage point with a rubber platform outsole. In canvas with synthetic leather 3-Stripes and heel tab.

TEXTILE/SYNTHETICS

**S82570** ftwr white/ftwr white/gold met.

**S82568** core black/ftwr white/gold met.

Size 3.5-9.5

99,95 €



S77406  
deliv.08/15

**SUPERSTAR RIZE W**

The adidas Originals Superstar Rize gives the iconic sneaker a whole new vantage point with a rubber platform outsole. In premium suede with glossy allover polka dots, nappy suede 3-Stripes and a canvas lining.

LEATHER

**S77406** core black/core black/ftwr white  
Size 3.5-9.5 **99,95 €**



S77411  
deliv.08/15

**Superstar W**

Debuting in 1970, the adidas Superstar was the first all-leather low top basketball shoe. This version updates the court classic with shiny polka dots on a premium suede upper. It has a rubber cupssole, nappy suede 3-Stripes and tongue with a glossy printed logo. Part of the Polka Palette pack.

LEATHER

**S77411** tomato f15-st/tomato f15-st/ftwr white  
Size 3.5-9.5 **89,95 €**



B35314  
deliv.06/15 **re-order**

**ZX FLUX W**

Simple and modern, the ZX Flux is a stylish descendent of the iconic ZX 8000 running shoe. The understated mesh upper features TPU printed 3-Stripes, offset with a glittery compression-moulded EVA outsole. The contrasting suede heel cage echoes the iconic ZX thousands series.

TEXTILE/LEATHER

**B35314** night sky/ftwr white/frozen green f15  
**B35313** mgh solid grey/ftwr white/solar pink  
Size 3.5-9.5 **89,95 €**



B35313  
deliv.06/15 **re-order**



B35310  
deliv.07/15

**ZX FLUX W**

Part of the new Walk of Snake Sneaker Boutique Pack, the ZX Flux is a stylish descendent of the ZX 8000 running shoe. The embossed leather upper has an all over snake print, with TPU printed 3-Stripes. The compression-moulded EVA outsole and suede TPU heel cage echo the iconic ZX thousands series.

LEATHER

**B35310** core black/core black/tomato f15-st  
Size 3.5-9.5 **99,95 €**



S77312  
deliv.07/15



S77313  
deliv.07/15

**ZX FLUX W**

Never before seen anywhere, this feminine new version of the ZX Flux features all-over polka dots on a fine canvas upper, mixed with shiny TPU 3-Stripes and a mini-ripstop nylon tongue. True to its iconic ZX 8000 DNA, it has a compression-moulded EVA outsole and classic TPU heel cage.

TEXTILE

**S77313** dark marine/ftwr white/ftwr white

**S77312** core black/ftwr white/ftwr white

Size 3.5-9.5

**89,95 €**



B35317  
deliv.07/15



B35318  
deliv.07/15

**ZX FLUX W**

Simple yet stunning, the ZX Flux is a stylish descendent of the iconic ZX 8000 running shoe. The engineered snake mesh upper features TPU printed 3-Stripes, set on a compression-moulded EVA outsole. The iconic ZX heel cage is styled in suede, with an eye-catching snake foil print.

TEXTILE/LEATHER

**B35318** pearl grey s14/pearl grey s14/joy pink s13

**B35317** core black/core black/tomato f15-st

Size 3.5-9.5

**89,95 €**



B35372  
deliv.06/15



B35371  
deliv.06/15

**ZX FLUX DECON W**

Inspired by the retro style of the original, the ZX Flux Decon takes the next step in the evolution of a classic runner with a fully deconstructed upper. Chic snake-print nylon combines with rough and see-through mesh, a diamond ripstop tongue and plastic eyestay details. Compression-moulded EVA outsole.

TEXTILE

**B35371** pearl grey s14/joy pink s13/ftwr white

**B35372** night indigo/light aqua/ftwr white

Size 3.5-9.5

**94,95 €**

S82885  
deliv.07/15**ZX FLUX SMOOTH W**

A softer, slimmer and more feminine version of the original ZX Flux, the new ZX Flux Smooth features a soft stretch mesh upper with full EVA and a TORSION® SYSTEM bar. Welded synthetic suede 3-Stripes and back strap loop, plus a soft TPU-printed heel cage complete the look.

TEXTILE

**S82885** super pop f15/core white/core black**S82884** core black/core white/core white**S82886** core white/core white/tomato f15-stSize 3.5-9.5 **89,95 €**S82884  
deliv.07/15 **re-order**S82886  
deliv.07/15 **re-order**S82936  
deliv.07/15 **re-order****ZX FLUX SMOOTH W**

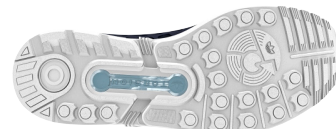
Part of the new Florea Sneaker Boutique Pack, the ZX Flux Smooth features a soft floral-print stretch jersey upper with full EVA and a TORSION® SYSTEM bar. Soft, slim and feminine, with welded synthetic suede 3-Stripes and back strap loop, plus a soft TPU printed heel cage.

TEXTILE

**S82936** legend ink s10/legend ink s10/core white**S82937** core black/core black/core whiteSize 3.5-9.5 **89,95 €**S82937  
deliv.07/15S81320  
deliv.07/15**ZX FLUX LACE W**

A sophisticated next step in the ZX family story, the new ZX Flux Lace sits on original ZX Flux tooling, but adds stylish new details to create a more fashionable look. The stretch mesh upper has a snake cut-out leather overlay, plus suede overlays on the vamp. Finished with an iconic suede heel cage.

TEXTILE/LEATHER

**S81320** core black/core black/ftwr white**S81321** night indigo/night indigo/ftwr white**S81322** pearl grey s14/pearl grey s14/ftwr whiteSize 3.5-9.5 **109,95 €**S81321  
deliv.07/15S81322  
deliv.07/15

WOMEN - RUNNING - TUBULAR



B25089  
 deliv.07/15



B25087  
 deliv.07/15

TUBULAR RUNNER W  
 TEXTILE/LEATHER

**B25087** ftwr white/ftwr white/ftwr white  
**B25089** core black/core black/core black  
 Size 3.5-13.5 **114,95 €**



Image not available

S81268  
 deliv.07/15



Image not available

S81269  
 deliv.07/15

TUBULAR RUNNER W

Once again, Originals redefines sportswear for the street. Inspired by contemporary fashion and rooted in adidas' sports heritage, this season's Tubular Runner is built with higher-cut sock construction and an upper in printed neoprene that mixes synthetic and real leather plus matte TPU print on the vamp. Part of the Florera sneaker pack.

TEXTILE/LEATHER

**S81269** core black/core black/ftwr white  
**S81268** legend ink s10/legend ink s10/ftwr white  
 Size 3.5-9.5 **109,95 €**



Image not available

S81261  
 deliv.07/15



Image not available

S81262  
 deliv.07/15

TUBULAR RUNNER W

Once again, Originals redefines sportswear for the street. Inspired by contemporary fashion and rooted in adidas' sports heritage, this season's Tubular Runner is built with higher-cut sock construction and a stretch melange neoprene upper. Detailed with synthetic patent leather and matte TPU print on the vamp.

TEXTILE/LEATHER

**S81262** mgh solid grey/mgh solid grey/berry f15-st  
**S81261** night sky/night sky/frozen green f15  
 Size 3.5-9.5 **109,95 €**



**WOMEN** - RUNNING



**ZX 500 OG W**

The ZX 500 first took hold of running culture in 1984 with its bio-mechanically correct design. This time around the ZX 500 OG shows up in an archival zigzag mesh upper with a satin quarter, soft pigskin suede overlays and an EVA midsole. Styled with a glittery flat rubber outsole for a more feminine OG look, synthetic leather 3-Stripes and classic ZX eystays.

TEXTILE/LEATHER

**S77321** grey/onix/collegiate red  
Size 3.5-9.5

**84,95 €**

S77321  
deliv.07/15



**ZX 500 OG W**

The ZX 500 first took hold of running culture in 1984 with its bio-mechanically correct design. This time around the ZX 500 OG shows up in a nylon upper with smooth leather overlays, an EVA midsole and a flat rubber outsole for lightweight comfort. Styled with synthetic leather 3-Stripes and classic ZX eystays.

TEXTILE/LEATHER

**B25601** core black/core black/core black

**B25600** ftwr white/ftwr white/ftwr white

Size 3.5-9.5

**84,95 €**

B25601  
deliv.07/15



B25600  
deliv.07/15

**WOMEN** - STAN SMITH



**STAN SMITH W**

The iconic Stan Smith shows how flashy it can be when dressed up in suede with a glossy honeycomb look. Features perforated 3-Stripes, a rubber cupsole and a contrast heel patch. This shoe is part of the June Sport Sneaker Boutique Pack: "White Gloss."

LEATHER

**B35442** ftwr white/ftwr white/core black

**B35443** ftwr white/ftwr white/green

Size 3.5-9.5

**84,95 €**

B35442  
deliv.06/15 **re-order**



B35443  
deliv.06/15 **re-order**



S81232  
deliv.08/15



S81231  
deliv.08/15

**STAN SMITH W**

Inspired by the crisp and clean look of the original, the Stan Smith has a suede upper in a seasonal selection of colours plus a feminine patent pop on the contrast heel patch that adds a feminine twist. With classic perforated 3-Stripes and a rubber cupsole.

LEATHER

**S81231** mgh solid grey/mgh solid grey/berry f15-st

**S81232** core black/core black/super pop f15  
Size 3.5-9.5 **84,95 €**



S81230  
deliv.07/15



S81229  
deliv.07/15

**STAN SMITH W**

Inspired by the crisp and clean look of the original, the Stan Smith has a canvas upper with an all-over digital print. Features classic perforated 3-Stripes, a contrast heel tab with matching laces and a rubber cupsole. This shoe is part of the July Sport Sneaker Boutique Pack: "Florera."

TEXTILE/SYNTHETICS

**S81229** core black/core black/ftwr white

**S81230** legend ink s10/legend ink s10/ftwr white  
Size 3.5-9.5 **89,95 €**



S81389  
deliv.07/15



S81389  
deliv.07/15

**STAN SMITH CF W**

As easy on the eyes as it is on the feet, the Stan Smith CF is an instant classic. This timeless tennis legend gets an extra touch of style with a snakeskin-embossed leather accent on the heel tab. Leather upper with perforated 3-Stripes, simple hook-and-loop closures and a classic cupsole.

LEATHER

**S81389** ftwr white/ftwr white/core black

**S81390** core black/core black/ftwr white  
Size 3.5-9.5 **94,95 €**

S81372  
deliv.07/15S81374  
deliv.07/15**MISS STAN W**

Inspired by the iconic 1971 Stan Smith shoes but styled to join the easy-to-wear Adria PS family, the new Miss Stan introduces a feminine new look. A smooth leather upper meets a snakeskin-embossed leather heel tab, perforated 3-Stripes and a rubber outsole with clean foxing.

LEATHER

**S81372** core black/core black/ftwr white**S81374** ftwr white/ftwr white/core black

Size 3.5-9.5

**74,95 €****WOMEN - CLASSICS**S77872  
deliv.06/15**GAZELLE OG W**

Released in 1968 as an all-around trainer, the Gazelle fast became football's "it" shoe. Today's Gazelle OG celebrates the iconic silhouette in a leather upper with a glossy honeycomb-pattern leather heel patch and contrast synthetic 3-Stripes. Gazelle OG tooling adds vintage style.

LEATHER/SYNTHETICS

**S77872** ftwr white/ftwr white/core black

Size 3.5-9.5

**94,95 €**S81335  
deliv.08/15**GAZELLE OG W**

Released in 1968 as an all-around trainer, the Gazelle fast became football's "it" shoe. Today's Gazelle OG celebrates the iconic silhouette in a suede upper with an all-over snakeskin foil print and contrast synthetic leather 3-Stripes. Gazelle OG tooling adds vintage style.

LEATHER/SYNTHETICS

**S81335** core black/core black/tomato f15-st**S81336** pearl grey s14/pearl grey s14/joy pink s13

Size 3.5-9.5

**94,95 €**S81336  
deliv.08/15

**WOMEN** - BASKETBALL



**B35342**  
deliv.07/15



**B35343**  
deliv.07/15

**M ATTITUDE W**

The M Attitude is a fun, feminine take on classic basketball shoes from the '80s. Features a synthetic nubuck upper with synthetic suede details and patent 3-Stripes, an oversize tongue that flashes a woven Trefoil label, and a rubber cupsole.

SYNTHETICS/LEATHER

**B35343** ftwr white/ftwr white/core black

**B35342** core black/core black/ftwr white

Size 3.5-9.5 **99,95 €**



**B35338**  
deliv.07/15



**B35339**  
deliv.07/15

**TOP TEN HI W**

A fresh one-to-one rerelease of a basketball shoe that dominated the courts in the '70s and '80s, this season's Top Ten Hi has a glossy honeycomb-embossed leather upper with a mesh collar, synthetic leather 3-Stripes and the original padded tongue with a glossy Top Ten logo.

LEATHER/TEXTILE

**B35339** ftwr white/core black/ftwr white

**B35338** core black/ftwr white/core black

Size 3.5-9.5 **89,95 €**

**MEN** - SUPERSTAR



**S77765**  
deliv.07/15



**S77766**  
deliv.07/15

**SUPERSTAR BECKENBAUER PACK**

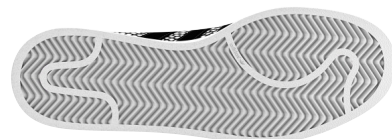
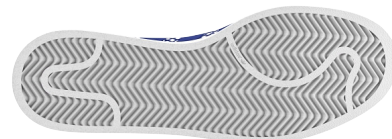
Two legends meet in the adidas Superstar Beckenbauer. Celebrating the master of German football, Franz Beckenbauer, and the master of streetwear, the adidas Superstar, this shoe is designed with a classic leather upper, leather 3-Stripes and a rubber cupsole.

TEXTILE/LEATHER

**S77765** green/green/ftwr white

**S77766** core black/core black/ftwr white

Size 3.5-13.5 **99,95 €**

S81728  
deliv.07/15S82729  
deliv.07/15S82731  
deliv.07/15**SUPERSTAR SNAKE PACK**

Part of this season's edgy updates to the iconic adidas Superstar, the adidas Superstar Snake treats the shell-toe icon to a reflective snakeskin print on a full leather upper. With a white rubber cupsole and contrasting leather 3-Stripes and heel patch, and rubber shell toe.

TEXTILE/LEATHER

**S81728** core black/core black/ftwr white**S82729** bold blue/bold blue/ftwr white**S82731** ftwr white/ftwr white/core blackSize 3.5-13.5 **99,95 €**S77853  
deliv.08/15S77854  
deliv.08/15S78325  
deliv.08/15**SUPERSTAR WEAVE PACK**

Vintage style meets modern materials with the adidas Superstar Weave. Updating the iconic shoe with a lightweight, one-piece woven upper, it has tonal leather 3-Stripes and a white rubber cupsole and shell toe.

TEXTILE/RUBBER

**S77853** core black/core black/ftwr white**S77854** clear grey/clear grey/ftwr white**S78325** core black/core black/core white**S78326** ftwr white/ftwr white/core black**S78327** dark blue/dark blue/core whiteSize 3.5-13.5 **99,95 €**S78326  
deliv.08/15S78327  
deliv.08/15



S82757  
deliv.08/15

**SUPERSTAR ODDITY PACK**

The adidas Superstar Oddity sports camouflage that stands out rather than blending in. With a mix-and-match style of bright colours and a classic camo print on a leather upper, it's a bold approach for a classic style. Rubber cupsole and leather 3-Stripes.

LEATHER/SYNTHETICS

**S82757** bright cyan/core black/gold met.

Size 3.5-13.5 **99,95 €**



S82758  
deliv.08/15

**SUPERSTAR ODDITY PACK**

The adidas Superstar Oddity sports camouflage that stands out rather than blending in. With a mix-and-match style of bright colours and a classic camo print on a leather upper, it's a bold approach for a classic style. Rubber cupsole and leather 3-Stripes.

LEATHER/SYNTHETICS

**S82758** dark marine/collegiate orange/gold met.

Size 3.5-13.5 **99,95 €**

## MEN - RUNNING - ZX FLUX

AF6403  
deliv.06/15AF6404  
deliv.06/15AF6343  
deliv.06/15AF6344  
deliv.06/15AF6345  
deliv.06/15M19840  
deliv.06/15M19841  
deliv.06/15M19838  
deliv.06/15**ZX FLUX**

Simple and modern, the ZX Flux is a descendent of the iconic ZX 8000 running shoe. It has a one-piece mesh upper with welded TPU 3-Stripes. The TPU heel counter echoes the iconic ZX thousands series.

TEXTILE/SYNTHETICS

**AF6403** ftwr white/ftwr white/ftwr white

**AF6404** core black/core black/dark grey

**AF6343** power pink s12/core black/ftwr white

**AF6344** dark marine/ftwr white/ftwr white

**AF6345** super green f15/core black/ftwr white

**M19840** core black/core black/white

**M19841** dark blue/dark blue/core white

**M19838** light granite/light granite/core white

Size 3.5-13.5

**89,95 €**



**B24904**  
deliv.08/15

**ZX FLUX**

This season's ZX Flux raids the Originals archives for a loud all-over print featuring some of the most iconic tongue logos in adidas history. Built with a diamond ripstop upper, this shoe includes a mesh lining, compression-moulded EVA tooling, and welded 3-Stripes.

TEXTILE/SYNTHETICS

**B24904** ftwr white/ftwr white/core black

Size 3.5-13.5

**99,95 €**



**S77720**  
deliv.08/15

**ZX FLUX**

This season's ZX Flux raids the Originals archives for a loud all-over print featuring some of the most iconic tongue logos in adidas history. Built with a diamond ripstop upper, this shoe includes a mesh lining, compression-moulded EVA tooling, and welded 3-Stripes.

TEXTILE/SYNTHETICS

**S77720** core black/ftwr white/core black

Size 3.5-13.5

**99,95 €**



**AF6390**  
deliv.08/15

**ZX FLUX**

This season's ZX Flux raids the Originals archives for a loud all-over print featuring some of the most iconic tongue logos in adidas history. Built with a diamond ripstop upper, this shoe includes a mesh lining, compression-moulded EVA tooling, and welded 3-Stripes.

TEXTILE/SYNTHETICS

**AF6390** ftwr white/ftwr white/core black

Size 3.5-13.5

**99,95 €**



**AF6323**  
deliv.07/15

**ZX FLUX**

This ZX Flux is a descendant of the iconic ZX 8000 running shoe and features a multicolour paint splatter graphic, bringing vivid colour pops to a modern silhouette. The shoe has a diamond ripstop upper with printed 3-Stripes and compression-moulded EVA cushioning.

TEXTILE

**AF6323** core black/core black/ftwr white

Size 3.5-13.5

**89,95 €**



**AF6324**  
deliv.07/15

**ZX FLUX**

This ZX Flux is a descendant of the iconic ZX 8000 running shoe and features a multicolour paint splatter graphic, bringing vivid colour pops to a modern silhouette. The shoe has a diamond ripstop upper with printed 3-Stripes and compression-moulded EVA cushioning.

TEXTILE

**AF6324** light onix/light onix/red

Size 3.5-13.5

**89,95 €**



**AF6325**  
deliv.07/15

**ZX FLUX**

This ZX Flux is a descendant of the iconic ZX 8000 running shoe and features a multicolour paint splatter graphic, bringing vivid colour pops to a modern silhouette. The shoe has a diamond ripstop upper with printed 3-Stripes and compression-moulded EVA cushioning.

TEXTILE

**AF6325** ftwr white/ftwr white/blue

Size 3.5-13.5

**89,95 €**



AF6326  
deliv.07/15AF6327  
deliv.07/15AF6328  
deliv.07/15**ZX FLUX**

Simple and modern, the ZX Flux is a descendant of the iconic ZX 8000 running shoe. This version has a fresh look in two-tone mesh with printed 3-Stripes and a fading print on the EVA midsole.

TEXTILE/SYNTHETICS

**AF6326** ftwr white/solar blue2 s14/dark blue

**AF6327** core black/red/power red

**AF6328** light onix/flash green s15/green

Size 3.5-13.5 **89,95 €**

AF6329  
deliv.08/15 **re-order**AF6330  
deliv.08/15 **re-order**AF6331  
deliv.08/15 **re-order****ZX FLUX**

Simple and modern, the ZX Flux is a descendant of the iconic ZX 8000 running shoe. This version has a fresh look in two-tone mesh with printed 3-Stripes and a fading chrome-effect heel cage.

TEXTILE/SYNTHETICS

**AF6329** solar blue2 s14/core black/ftwr white

**AF6330** red/core black/ftwr white

**AF6331** flash green s15/core black/ftwr white

Size 3.5-13.5 **89,95 €**



AF6317  
 deliv.06/15



AF6316  
 deliv.06/15



AF6315  
 deliv.06/15



AF6320  
 deliv.06/15



AF6319  
 deliv.06/15



AF6318  
 deliv.06/15

**ZX FLUX**

Simple and modern, the ZX Flux is a descendant of the iconic ZX 8000 running shoe. It has an engineered mesh upper with printed 3-Stripes and a translucent TPU heel counter that echoes the iconic ZX thousands series. With compression-moulded EVA cushioning.

TEXTILE/SYNTHETICS

- AF6315** onix/onix/core black
  - AF6316** bright royal/bright royal/dark blue
  - AF6317** ftwr white/ftwr white/clear grey
  - AF6318** core black/core black/semi frozen yellow f15
  - AF6319** clear grey/clear grey/bright royal
  - AF6320** dark blue/dark blue/collegiate purple
- Size 3.5-13.5 **99,95 €**

B24932  
deliv.08/15B24934  
deliv.08/15AF6388  
deliv.08/15AF6389  
deliv.08/15**ZX FLUX TECHFIT**

With a bold aquaprint of an all-over snakeskin pattern, the ZX Flux Techfit reimagines the modern runner with stealthy street style. Featuring a new streamlined shape and advanced tongue construction, it's built with a stretch-mesh techfit® upper, mesh lining, welded 3-Stripes and compression-moulded EVA tooling.

TEXTILE/SYNTHETICS

**B24932** bluebird/collegiate navy/ftwr white**B24934** solar yellow/ftwr white/onix**AF6388** core black/core black/super yellow f15**AF6389** clear/clear/super yellow f15Size 3.5-13.5 **109,95 €**AF6350  
deliv.07/15AF6351  
deliv.07/15AF6352  
deliv.07/15**ZX FLUX NPS UPDT**

The ZX Flux NPS UPDT gives the minimal Flux sneaker a cool look with an inner neoprene bootie. Made in mesh with suede and stretch mesh details, they come with printed 3-Stripes, an authentic ZX TPU heel cage and EVA cushioning.

TEXTILE/SYNTHETICS

**AF6350** core black/core black/bright royal**AF6351** light onix/light onix/core black**AF6352** dark blue/dark blue/redSize 3.5-13.5 **99,95 €**

MEN - RUNNING - TUBULAR



B25531  
 deliv.08/15



B25532  
 deliv.08/15

**TUBULAR RUNNER**

Once again, Originals redefines sportswear for the street. Inspired by contemporary fashion and rooted in adidas' sports heritage, the Tubular Runner is built with a higher-cut Neoprene sock upper featuring a bold safari camo print, a translucent toe overlay and leather details.

TEXTILE/LEATHER

**B25532** mgh solid grey/lgh solid grey/core black

**B25531** ftwr white/core black/collegiate orange

Size 3.5-13.5

119,95 €



S82652  
 deliv.09/15

**TUBULAR RUNNER WEAVE**

Clean, sophisticated and with modern style, the Tubular Runner Weave is made with a grey heather material and reflective print upper for a sleek profile. It features a full EVA outsole and welded reflective overlays.

TEXTILE/SYNTHETICS

**S82652** dgh solid grey/tomato f15-st/ftwr white

Size 3.5-13.5

109,95 €



M19648  
 deliv.06/15

**TUBULAR RUNNER**

Once again, Originals redefines sportswear for the street. Inspired by contemporary fashion and rooted in adidas' sports heritage, the Tubular Runner is built with a higher-cut sock construction with welded overlays and a mix of synthetic, leather and neoprene in the upper and EVA tooling. Comes in fresh seasonal colours.

TEXTILE/SYNTHETICS

**M19648** core black/core black/ftwr white

Size 3.5-13.5

109,95 €



S83141  
 deliv.06/15

**TUBULAR RUNNER**

Once again, Originals redefines sportswear for the street. Inspired by contemporary fashion and rooted in adidas' sports heritage, the Tubular Runner is built with a higher-cut sock construction with welded overlays and a mix of synthetic, leather and neoprene in the upper and EVA tooling. Comes in fresh seasonal colours.

TEXTILE

**S83141** ftwr white/ftwr white/core black

Size 3.5-13.5

109,95 €

B25598  
deliv.07/15B25596  
deliv.07/15B25597  
deliv.07/15AF6289  
deliv.07/15**TUBULAR RUNNER WEAVE**

Clean, sophisticated and with modern style, the Tubular Runner Weave has an engineered woven upper for a sleek profile, and features premium pigskin suede details and a full EVA outsole.

TEXTILE/LEATHER

**B25598** base green s15/base green s15/ftwr white

**B25596** collegiate navy/collegiate navy/ftwr white

**B25597** scarlet/scarlet/ftwr white

**AF6289** carbon s14/carbon s14/ftwr white

Size 3.5-13.5 **109,95 €**

**MEN - RUNNING****ZX 5000 RSPN**

The ZX thousands series dominated the late '80s, and with the ZX 5000 RSPN that shows no sign of slowing down. Bold new colourways freshen the look for summer. Features pigskin overlays and ripstop underlays, high-abrasion toe and heel panels, synthetic 3-Stripes and a compression-moulded EVA outsole with TORSION® SYSTEM support.

TEXTILE/SYNTHETICS

**B24828** core black/core black/solar red

**B24830** dark marine/dark marine/semi solar slime

Size 3.5-13.5 **109,95 €**

B24828  
deliv.06/15B24830  
deliv.06/15



M20327  
deliv.06/15



M20325  
deliv.06/15



M20324  
deliv.06/15

**STAN SMITH**

As classic and clean as the original, this Stan Smith has a soft, premium leather upper, perforated 3-Stripes, a visa terry sockliner and contrast heel tab. A rubber outsole finishes this court classic.

LEATHER/SYNTHETICS

**M20324** ftwr white/core white/green

**M20325** core white/core white/dark blue

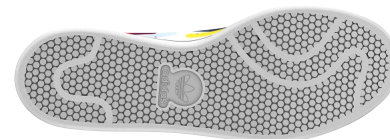
**M20327** core black/core black/core black

Size 3.5-13.5

84,95 €



B24706  
deliv.07/15



B24704  
deliv.07/15

**STAN SMITH**

Inspired by Originals' collaboration with Pharrell, this Stan Smith lightens up with a loud and layered print of multi-coloured stripes printed on a premium leather upper. Includes perforated 3-Stripes, a rubber outsole, and an OrthoLite® sockliner for added comfort.

LEATHER

**B24704** ftwr white/ftwr white/red

**B24706** ftwr white/ftwr white/core black

Size 3.5-13.5

94,95 €



B24712  
deliv.06/15



B24710  
deliv.06/15



B24711  
deliv.06/15

**STAN SMITH**

The classic Stan Smith court shoe is reimagined for the street with a fully-woven upper that pairs a white base with accent colours for a vibrant mélange effect. Features a breathable mesh lining, an OrthoLite® sockliner, embroidered 3-Stripes, and a rubber cupsole.

TEXTILE/LEATHER

**B24711** lgh solid grey/ftwr white/ftwr white

**B24710** oxford blue f15-st/ftwr white/ftwr white

**B24712** tomato f15-st/ftwr white/ftwr white

Size 3.5-13.5

84,95 €

S77684  
deliv.08/15**STAN SMITH**

The Stan Smith proudly shows its originality on the tongue and heeltab with a bold all-over print of the most iconic tongue logos in adidas history. Made with a premium leather upper, the shoe includes a mesh lining with the same all-over print and compression-moulded EVA tooling.

LEATHER/TEXTILE

**S77684** core black/core black/ftwr white

Size 3.5-13.5

**84,95 €**S77683  
deliv.08/15**STAN SMITH**

This season's Stan Smith raids the Originals archives for a loud all-over print featuring some of the most iconic tongue logos in adidas history. Built with a diamond ripstop nylon upper, this shoe includes a mesh lining, compression-moulded EVA tooling, and welded 3-Stripes.

TEXTILE/LEATHER

**S77683** ftwr white/ftwr white/core black

Size 3.5-13.5

**84,95 €**B24713  
deliv.08/15**STAN SMITH**

Inspired by the crisp and clean look of the original, the Stan Smith gets ready for cooler weather with a premium nubuck upper dipped in a seasonal colours. Features a comfy leather lining with an OrthoLite® sockliner and classic perforated 3-Stripes and rubber cupssole. Finished with a reflective heel pull tab.

LEATHER

**B24713** midnight indigo f15/collegiate orange/cream white**B24715** rust red f15-st/core black/cream white

Size 3.5-13.5

**94,95 €**B24715  
deliv.08/15B24535  
deliv.07/15 **re-order****STAN SMITH CF**

As easy on the eyes as it is on the feet, the Stan Smith CF is an instant classic. The timeless tennis legend gets a luxury treatment with snakeskin-debossed leather on the quarter and smooth leather on the vamp and tongue. It also features a classic cupssole and perforated 3-Stripes, plus hook-and-loop closures.

LEATHER

**B24535** ftwr white/green/cream white**B24534** ftwr white/collegiate royal/cream white

Size 3.5-13.5

**94,95 €**B24534  
deliv.07/15 **re-order**



S77449  
deliv.06/15



S77450  
deliv.06/15

**STAN SMITH VULC**

The Stan Smith Vulc puts a spin on a court classic with premium materials and a casual vibe. Now with a vulcanised outsole, it features smooth leather on the upper and heel tab overlay and classic perforated 3-Stripes.

LEATHER

**S77450** ftwr white/green/ftwr white

**S77449** ftwr white/ftwr white/core black

Size 3.5-13.5

84,95 €



B24550  
deliv.08/15



B24549  
deliv.08/15

**STAN SMITH VULC**

The Stan Smith Vulc puts a spin on a court classic with fresh details and a casual vibe. A full ripstop nylon upper with an eye-catching all-over print has a contrasting synthetic lining and heel patch. Finished with a vulcanised outsole and perforated 3-Stripes.

TEXTILE

**B24549** night navy/night navy/ftwr white

**B24550** night red/night red/ftwr white

Size 3.5-13.5

84,95 €

**MEN** - CLASSICS



S77295  
deliv.06/15



B35198  
deliv.06/15



B24983  
deliv.06/15

**GAZELLE OG**

The adidas Gazelle was first issued in 1966 as an all-around training shoe; its streamlined profile and innovative cushioning made it a hit among top athletes. The Gazelle OG is an authentic one-to-one reissue from the archives, with a pigskin suede upper.

LEATHER/SYNTHETICS

**B24983** solar blue2 s14/core black/ftwr white

**B35198** fox red f14-st/ftwr white/gold met.

**S77295** base green s15/ftwr white/gold met.

Size 3.5-13.5

89,95 €





B24976  
deliv.07/15



B24975  
deliv.07/15

**GAZELLE INDOOR**

Debuting in '68, the Gazelle Indoor updates the international sneaker icon with a soft, perforated suede upper, mesh lining, stitched-on 3-Stripes, and the classic off-white rubber outsole.

LEATHER/SYNTHETICS

**B24976** midnight f15/midnight f15/ftwr white

**B24975** cream white/cream white/ftwr white

Size 3.5-13.5 **89,95 €**



B24972  
deliv.06/15



B24974  
deliv.06/15

**GAZELLE INDOOR**

Debuting in '68, the Gazelle Indoor updates the international sneaker icon with a full suede leather upper, synthetic leather 3-Stripes and lining, and a translucent gum rubber outsole.

LEATHER/SYNTHETICS

**B24972** core black/ftwr white/gum 2

**B24974** bluebird/ftwr white/gum 2

Size 3.5-13.5 **89,95 €**

**MEN - BASKETBALL**



M20716  
deliv.09/15



D65161  
deliv.06/15

**TOP TEN HI**

A fresh one-to-one re-release of a basketball shoe that dominated the courts in the '70s and '80s. This season's Top Ten Hi takes to the streets with a soft leather upper, a semi-shiny synthetic ankle insert, synthetic 3-Stripes, and the original padded tongue with a Top Ten logo. Features a synthetic lining and a retro off-white cupsole.

LEATHER

**M20716** collegiate royal/core white/red-sld

Size 3.5-13.5 **99,95 €**

**TOP TEN HI**

A fresh one-to-one re-release of a basketball shoe that dominated the courts in the '70s and '80s. This season's Top Ten Hi takes to the streets with a soft leather upper, a semi-shiny synthetic ankle insert, synthetic 3-Stripes, and the original padded tongue with a Top Ten logo. Features a synthetic lining and a retro off-white cupsole.

LEATHER/SYNTHETICS

**D65161** neo white s08/new navy ftw/collegiate red

Size 3.5-13.5 **99,95 €**



B35368  
deliv.07/15



B35367  
deliv.07/15

**TOP TEN HI**

A fresh one-to-one re-release of a basketball shoe that dominated the courts in the '70s and '80s. This Top Ten Hi takes to the streets with the upper, lining, and 3-Stripes all in soft leather. The original padded tongue features a loud camo print with a Top Ten logo. Includes rubber cupsole.

LEATHER/TEXTILE

**B35367** ftwr white/chalk white/hemp

**B35368** dark slate s06/chalk white/ftwr white

Size 3.5-13.5 **94,95 €**



B35273  
deliv.08/15



B35272  
deliv.08/15



B35271  
deliv.08/15

**FORUM MID RS**

With the padded ankle and classic ankle strap, the Forum Mid RS is a one-to-one reproduction of the icon originally introduced in 1989. A seasonal update brings reflective snakeskin leather to the shoe's upper, lining, and 3-Stripes. A rubber cupsole cushions the ride. Part of the Snake Pack.

TEXTILE/LEATHER

**B35271** red/ftwr white/red

**B35272** core black/ftwr white/core black

**B35273** bluebird/ftwr white/bluebird

Size 3.5-13.5 **99,95 €**



B35269  
deliv.06/15



B35270  
deliv.06/15

**FORUM LO RS**

With the padded ankle and classic ankle strap, the Forum Lo RS refreshes the icon originally introduced in 1989 with a sporty suede upper and stylish seasonal colours. Features a leather lining and 3-Stripes plus a rubber cupsole.

LEATHER

**B35270** clear grey/ftwr white/clear grey

**B35269** collegiate royal/ftwr white/collegiate royal

Size 3.5-13.5 **94,95 €**



**FORUM LO RS**

With the padded ankle and classic ankle strap, the Forum Lo RS is a one-to-one reproduction of the icon originally introduced in 1989, issued in clean and contemporary all-white. Features leather on the upper, lining, and 3-Stripes plus a rubber cupsole.

LEATHER

**S81633** ftwr white/ftwr white/lgh solid grey  
Size 3.5-13.5 **94,95 €**

S81633  
deliv.06/15



**VERITAS**  
TEXTILE

**AF4388** onix/ftwr white/core black

**AF4389** core black/orange/blue

Size 3.5-13.5 **99,95 €**

AF4388  
deliv.08/15



AF4389  
deliv.08/15



AF4392  
deliv.07/15



AF4391  
deliv.07/15 **re-order**



AF4390  
deliv.07/15 **re-order**



AF4393  
deliv.07/15

**VERITAS**  
TEXTILE

**AF4390** core black/bright blue/ftwr white

**AF4391** core black/fango/ftwr white

**AF4392** core black/merlot f15-st /ftwr white

**AF4393** core black/ftwr white/light onix

Size 3.5-13.5 **99,95 €**

**MEN** - ACTION SPORTS



D68866  
deliv.06/15

**SEELEY**

Built on the bones of one of the most notorious hooligan shoes of all time—the Adidas Gazelle—the Seeley blends classic Adidas-heritage style with amazing comfort and low-profile skate performance. The smooth, abrasion-resistant upper stands up to abuse, with a lightly padded mid-top cut for better ankle protection and support and a grippy vulcanized rubber outsole that sticks to your board for great control.

LEATHER/SYNTHETICS

**D68866** dgh solid grey/bright orange/ftwr white

Size 3.5-13.5 **69,95 €**



**SEELEY**

Built on the bones of one of the most notorious hooligan shoes of all time—the Adidas Gazelle—the Seeley blends classic Adidas-heritage style with amazing comfort and low-profile skate performance. The smooth, abrasion-resistant upper stands up to abuse, with a lightly padded mid-top cut for better ankle protection and support and a grippy vulcanized rubber outsole that sticks to your board for great control.

TEXTILE/SYNTHETICS

**D68872** core black/collegiate burgundy/ftwr white

**D68873** core black/midnight f15/bright orange  
Size 3.5-13.5 **69,95 €**



D68872  
deliv.10/15



D68873  
deliv.07/15



**SEELEY MID**

Built on the bones of one of the most notorious hooligan shoes of all time—the Adidas Gazelle—the Seeley blends classic Adidas-heritage style with amazing comfort and low-profile skate performance. The smooth, abrasion-resistant upper stands up to abuse, with a lightly padded mid-top cut for better ankle protection and support and a grippy vulcanized rubber outsole that sticks to your board for great control.

LEATHER/SYNTHETICS

**D68884** core black/dgh solid grey/ftwr white

**D68885** surf petrol s15-st/core black/ftwr white  
Size 3.5-13.5 **74,95 €**



D68884  
deliv.06/15



D68885  
deliv.06/15



**SEELEY WOVEN**

Built on the bones of one of the most notorious hooligan shoes of all time—the Adidas Gazelle—the Seeley blends classic Adidas-heritage style with amazing comfort and low-profile skate performance. The smooth, abrasion-resistant upper stands up to abuse, with a lightly padded mid-top cut for better ankle protection and support and a grippy vulcanized rubber outsole that sticks to your board for great control.

TEXTILE

**D69227** core black/ftwr white/gum4

**D69228** grey/collegiate navy/timber s15-st  
Size 3.5-13.5 **74,95 €**



D69227  
deliv.07/15



D69228  
deliv.07/15



C75611  
deliv.06/15

**ADI-EASE**

Iconic indoor-soccer style meets skate-specific goodness in this classic vulcanized shoe built to handle any situation. Clean design lines meet abrasion resistance and support for functional style. A low-profile vulcanized outsole facilitates great grip and board feel.

TEXTILE/SYNTHETICS

**C75611** core black/ftwr white/core black  
Size 3.5-13.5 **64,95 €**



D68893  
deliv.07/15

**ADI-EASE**

Iconic indoor-soccer style meets skate-specific goodness in this classic vulcanized shoe built to handle any situation. Clean design lines meet abrasion resistance and support for functional style. A low-profile vulcanized outsole facilitates great grip and board feel.

TEXTILE/SYNTHETICS

**D68893** core black/fade ink f15-st/bright orange  
Size 3.5-13.5 **64,95 €**



D68895  
deliv.06/15

**ADI-EASE**

Iconic indoor-soccer style meets skate-specific goodness in this classic vulcanized shoe built to handle any situation. Clean design lines meet abrasion resistance and support for functional style. A low-profile vulcanized outsole facilitates great grip and board feel.

TEXTILE/SYNTHETICS

**D68895** dgh solid grey/core black/ftwr white  
Size 3.5-13.5 **64,95 €**



D68898  
deliv.08/15



D68899  
deliv.08/15

**ADI-EASE**

Iconic indoor-soccer style meets skate-specific goodness in this classic vulcanized shoe built to handle any situation. Clean design lines meet abrasion resistance and support for functional style. A low-profile vulcanized outsole facilitates great grip and board feel.

TEXTILE/SYNTHETICS

**D68898** collegiate burgundy/collegiate burgundy/fade ink f15-st  
**D68899** midnight f15/ftwr white/gum4  
Size 3.5-13.5 **64,95 €**



D68890  
deliv.07/15

**ADI-EASE**

Souped up in rich full-grain leather and waxed canvas along with other high-end details, this premium version of the Adi-Ease takes an adidas Skateboarding classic into new, elevated realms of style. Featuring the same low-profile comfort and functional performance as the original, the Adi-Ease Classified is upgraded with round waxed laces and a luxe metal tongue badge.

TEXTILE/SYNTHETICS

**D68890** core black/core black/ftwr white  
Size 3.5-13.5 **74,95 €**



D69231  
deliv.07/15

**ADICOURT STRIPES**

Vintage tennis trainers get a modern skate infusion. The Adicourt sports a slimmed down, lightened up build with aptly placed internal reinforcements for cushioning and supreme comfort. The smooth, abrasion-resistant upper features crisp printed 3-stripes detail and a grippy vulcanized outsole that sticks to your board for great control.

TEXTILE/SYNTHETICS

**D69231** night red/ftwr white/bright orange  
Size 3.5-13.5 **69,95 €**



D69356  
deliv.07/15

**COPA SKATE WOVEN**

The Copa Skate brings sleek soccer aesthetics to a low-profile cupssole skate shoe with exceptional board feel. We've perfed the tongue and upper for breathability during heated sessions and implemented an EVA insole for cushioning and support.

TEXTILE

**D69356** core black/dgh solid grey/ftwr white  
Size 3.5-13.5 **74,95 €**



C76945  
deliv.06/15

**SKATE COPA**

The Copa Skate brings sleek soccer aesthetics to a low-profile cupssole skate shoe with exceptional board feel. We've perfed the tongue and upper for breathability during heated sessions and implemented an EVA insole for cushioning and support.

LEATHER/SYNTHETICS

**C76945** core black/ftwr white/ftwr white  
Size 3.5-13.5 **74,95 €**



D68874  
deliv.10/15

**SEELEY NBA**

LEATHER/SYNTHETICS

**D68874** ftwr white/gold-sld/regal purple-sld  
Size 3.5-13.5 **74,95 €**



M20628  
deliv.06/15



M20626  
deliv.06/15

**Porsche 356**

Taking its name from Porsche's historic production debut, the Porsche 356 shoe blends elegant lines with a low-cut, performance inspired look. These shoes feature a premium leather upper with comfortable cushioning, and are styled with a metal vintage Porsche logo.

LEATHER

**M20626** black/black/white vapour s11

**M20628** white vapour s11/white vapour s11/  
night cargo f14-st

Size 6-13.5 **139,95 €**



S82813  
deliv.06/15

**Porsche Typ64 Sport**

With a streamlined aluminium body and aerodynamic design, the Typ 64 is the forefather of all Porsches. The Porsche Typ 64 Sport shoe honours the legacy with a textured one-piece upper with subtle embossing details and an external running shoe-inspired heel counter. With EVA cushioning, it's detailed with embossed 3-Stripes and a vintage metal Porsche logo.

SYNTHETICS

**S82813** night navy/night navy/bluebird

Size 6-13 **109,95 €**



M20586  
deliv.06/15



M20587  
deliv.06/15

**Porsche Typ 64 2.0**

The Typ 64 was the first sports car to showcase the now coveted Porsche lettering on the car body. Developed by Ferdinand Porsche, its design became an iconic, all time classic. This Porsche Typ 64 2.0 shoe upholds the standard with a low-profile driving shoe design, premium leather upper, rubber outsole, debossed 3-Stripes and a metal Porsche vintage logo.

LEATHER

**M20587** ftwr white/ftwr white/ftwr white

**M20586** black/black/black

Size 6-13.5 **119,95 €**



**JUNIORS** - SUPERSTAR



B25732  
deliv.06/15

**SUPERSTAR GRAPHIC K**

For kids on a mission, the adidas Superstar Graphic K takes one of adidas' most famous icons and wraps it top-to-bottom in an all-over camouflage print. Made with a synthetic leather upper, it features ripstop 3-Stripes and a rubber cupsole.

**B25732** core black/core black/core black  
Size 28-35; 3-6.5 **69,95 €**



B25737  
deliv.08/15

**SUPERSTAR ODDITY K**

Standing out instead of blending in, the adidas Superstar Oddity K colours kids' world with its bold version of the legendary shoe. Bright colours mix with camouflage print on its leather upper. Features a rubber cupsole and synthetic leather 3-Stripes.

LEATHER/SYNTHETICS  
**B25737** dark marine/collegiate orange/ftwr white  
Size 28-35; 3-6.5 **69,95 €**



B25739  
deliv.07/15

**SUPERSTAR SNAKE K**

Giving kids an edgy update to the iconic Superstar, the adidas Superstar Snake K treats the shell-toe icon to a reflective snakeskin print on a full mesh upper. With a rubber cupsole and contrasting leather 3-Stripes and heel patch.

TEXTILE/LEATHER  
**B25739** ftwr white/ftwr white/ftwr white  
Size 28-35; 3-6.5 **69,95 €**

**JUNIORS** - RUNNING - ZX FLUX



M21295  
deliv.06/15

**ZX FLUX K**

Built just for kids, the ZX Flux K is a descendent of the iconic ZX 8000 running shoe. It has a one-piece mesh upper, breathable mesh lining, and welded TPU 3-Stripes. The midsole, outsole and TPU heel cage echo the iconic ZX thousands series.

TEXTILE/SYNTHETICS  
**M21295** solar yellow/core black/ftwr white  
**AF6262** flash red s15/core black/ftwr white  
Size 28-35; 3-6.5 **59,95 €**



**Image not available**

AF6262  
deliv.06/15



**B25639**  
 deliv.06/15



**B25638**  
 deliv.06/15 **re-order**



**B25637**  
 deliv.06/15 **re-order**

**ZX FLUX K**

Simple, modern and an ideal back to school shoe, the ZX Flux K is a descendent of the iconic ZX 8000 running shoe, designed for kids. It has a one-piece mesh upper in fresh seasonal colours with welded TPU 3-Stripes. Features an injection EVA midsole, a rubber outsole and an OrthoLite® sockliner for comfort.

TEXTILE

**B25637** oxford blue f15-st/fade ink f15-st/ftwr white

**B25638** mgh solid grey/carbon s14/ftwr white

**B25639** joy s13/peach pink f15-st/ftwr white  
 Size 28-35; 3-6.5 **59,95 €**



**B25642**  
 deliv.07/15

**ZX FLUX K**

Simple and modern, the ZX Flux K descends from the iconic ZX 8000 running shoe. Its baseball-satin upper features an eye-catching allover cheetah print and welded TPU 3-Stripes. With a TPU heel counter, EVA midsole and OrthoLite® sockliner for stability and comfort.

TEXTILE

**B25642** core black/core black/ftwr white  
 Size 28-35; 3-6.5 **69,95 €**



**B25643**  
 deliv.07/15

**ZX FLUX K**

Simple and modern, the ZX Flux K descends from the iconic ZX 8000 running shoe. Its baseball-satin upper features a girly allover hibiscus print and welded TPU 3-Stripes. With a TPU heel counter, EVA midsole and OrthoLite® sockliner for stability and comfort.

TEXTILE

**B25643** core black/core black/ftwr white  
 Size 28-35; 3-6.5 **69,95 €**



**S82615**  
 deliv.07/15

**ZX FLUX K**

Simple and modern, the ZX Flux K descends from iconic ZX 8000 running shoe. Its baseball-satin upper has a black and white allover snakeskin print and welded TPU 3-Stripes. With a TPU heel counter, EVA midsole and OrthoLite® sockliner for stability and comfort.

TEXTILE

**S82615** core black/core black/tomato f15-st  
 Size 28-35; 3-6.5 **69,95 €**



**B24718**  
 deliv.06/15

**ZX FLUX MILLENIUM FALCON K**

The most iconic Star Wars™ spaceship in the galaxy comes to life with the ZX Flux Millennium Falcon K. The upper's print colours and reflective stripes give it a steely spaceship, futuristic look. Wicking OrthoLite® sockliner keeps small feet comfortable. EVA-tooled outsole.

TEXTILE/SYNTHETICS

**B24718** core black/reflective/ftwr white  
 Size 28-35; 3-6.5 **74,95 €**

110 JUNIORS  
RUNNING - ZX FLUX

FOOTWEAR Q3



S82718  
deliv.08/15

**ZX FLUX NPS UPD ODDITY K**

A little outdoor adventure comes to the streets for kids. Part of the Oddity Sneaker Pack, the colourful ZX Flux NPS UPD ODDITY K features reflective details on the mesh upper. With neoprene sock construction, this kids' shoe has an OrthoLite® footbed, welded 3-Stripes, injection midsole and a rubber outsole.

TEXTILE/SYNTHETICS

**S82718** core black/solar blue2 s14/solar yellow

Size 28-35; 3-6.5 **74,95 €**



S82695  
deliv.06/15 **re-order**

**ZX FLUX K**

Simple, modern and an ideal back to school shoe, the ZX Flux K is a descendent of the iconic ZX 8000 running shoe, designed for kids. It has a one-piece mesh upper in fresh seasonal colours with welded TPU 3-Stripes. Features an injection EVA midsole, a rubber outsole and an OrthoLite® sockliner for comfort.

TEXTILE

**S82695** core black/core black/core black

Size 28-35; 3-6.5 **59,95 €**



B25538  
deliv.06/15

**TUBULAR K**

Inspired by fashion and rooted in the sporty tradition of late '80s and '90s shoes, the Tubular Runner K is built with a higher cut sock construction featuring a one-tone neoprene upper which has welded synthetic and leather overlays, and a contrast-colour lining. A bright white EVA midsole and OrthoLite® sockliner cushions the ride and keeps little feet fresh.

TEXTILE/SYNTHETICS

**B25538** core black/core black/ftwr white

Size 28-35; 3-6.5 **74,95 €**



S77478  
deliv.06/15

**TUBULAR K**

Inspired by fashion and rooted in the sporty tradition of late '80s and '90s shoes, the Tubular Runner K is built with a higher cut sock construction featuring an alllover hibiscus print neoprene upper which has welded synthetic and leather overlays. A bright white EVA midsole and OrthoLite® sockliner cushions the ride and keeps little feet fresh.

TEXTILE/SYNTHETICS

**S77478** core black/core black/ftwr white

Size 28-35; 3-6.5 **74,95 €**



B25585  
deliv.08/15

**ZX 500 ODDITY K**

The 1984 ZX 500 runner's stunning, bio-mechanically correct design is now kid-sized. Part of the oddity sneaker pack, this ZX 500 Oddity K's mesh upper is boldly coloured from tooling to lace tip, with a mix of faux suede and synthetic leather overlays. Breathable OrthoLite® sockliner, and comfort closures for easy on and off.

TEXTILE/SYNTHETICS

**B25585** core black/flash red s15/core black

Size 28-35; 3-6.5 **59,95 €**



**B32703**  
deliv.06/15 **re-order**



**M20604**  
deliv.06/15 **re-order**



**M20605**  
deliv.06/15 **re-order**

**STAN SMITH J**

The Stan Smith story gets reworked for little feet in this junior-sized Stan Smith J shoe. A durable leather upper is paired with soft terry and synthetic leather lining, perforated 3-Stripes, rubber outsole and OrthoLite® sockliner.

LEATHER/SYNTHETICS

**M20605** ftwr white/ftwr white/green

**M20604** black/black/ftwr white

**B32703** ftwr white/ftwr white/bold pink

Size 3-6.5

**54,95 €**



**S82703**  
deliv.06/15



**S82702**  
deliv.06/15

**STAN SMITH CF J**

As easy on the eyes as it is on the feet, the Stan Smith CF J is an instant classic. The timeless tennis legend gets treated to a premium leather upper and mesh Visa-terry lining. It features perforated 3-Stripes, a classic rubber outsole and breathable OrthoLite® sockliner.

LEATHER/SYNTHETICS

**S82702** ftwr white/ftwr white/ftwr white

**S82703** core black/core black/core black

Size 3-6.5

**59,95 €**



**B24606**  
deliv.08/15

**STAN SMITH VULC J**

With its vulcanised rubber outsole and lightweight build, the Stan Smith Vulc J is a casual and stylish refresh of an original court classic. Sized right for kids, its mesh-lined, ripstop nylon upper has an allover cheetah print, embroidered 3-Stripes and contrast laces. An OrthoLite® sockliner keeps active feet dry and comfy.

TEXTILE/SYNTHETICS

**B24606** core black/ftwr white/ftwr white

Size 3-6.5

**59,95 €**



**S81613**  
deliv.08/15

**STAN SMITH VULC J**

With its vulcanised rubber outsole and lightweight build, the Stan Smith Vulc J is a casual and stylish refresh of an original court classic. Its mesh-lined, ripstop nylon upper has an allover floral print, embroidered 3-Stripes and contrast laces. An OrthoLite® sockliner keeps active feet dry and comfy.

TEXTILE/LEATHER

**S81613** night navy/night navy/ftwr white

Size 3-6.5

**59,95 €**



B24607  
deliv.07/15



B24608  
deliv.07/15

**STAN SMITH VULC J**

With its vulcanised rubber outsole and lightweight build, the Stan Smith Vulc J is a casual and stylish refresh of an original court classic. Sized just for kids, it features a suede upper with mesh lining, perforated 3-Stripes and contrast laces. An OrthoLite® sockliner keeps active feet comfy.

LEATHER/SYNTHETICS

**B24607** merlot f15-st /peach pink f15-st/ftwr white

**B24608** midnight f15/tomato f15-st/ftwr white  
Size 3-6.5 **54,95 €**



**Image not available**

**STAN SMITH AT-AT J**

Combining the most iconic court shoe with Star Wars™, the Stan Smith AT-AT J has arrived. Lenticular rubber on the upper makes the Star Wars™ figures walk when kids move. Classic rubber outsole and wicking OrthoLite® sockliner.

SYNTHETICS

**B24720** core black/core black/ftwr white

Size 3-6.5 **69,95 €**

B24720  
deliv.06/15

**JUNIORS - BASKETBALL**



S82858  
deliv.07/15



S82860  
deliv.07/15

**VERITAS MID K**

Archival inspiration gets contemporary details and updates in the Veritas Mid K. Sized for kids and built for comfort, this shoe features a two-tone mesh upper, welded 3-Stripes, an EVA midsole and rubber cupssole. A breathable OrthoLite® sockliner adds extra cushion.

TEXTILE

**S82858** solar yellow/core black/ftwr white

**S82860** bold blue/core black/ftwr white  
Size 28-35; 3-6.5 **69,95 €**



S82862  
deliv.08/15

**VERITAS MID K**

Archival inspiration gets contemporary details and updates in the Veritas Mid K. Sized for kids and built for comfort, this shoe features a mesh upper with snake print, welded 3-Stripes, an EVA midsole and rubber cupsole. A breathable OrthoLite® sockliner adds extra cushion.

TEXTILE

**S82862** ftwr white/core black/ftwr white  
Size 28-35; 3-6.5 **69,95 €**



S82861  
deliv.08/15

**VERITAS MID K**

Archival inspiration gets contemporary details and updates in the Veritas Mid K. Sized for kids and built for comfort, this shoe features a baseball satin upper with fun all-over floral print, welded 3-Stripes, an EVA midsole and rubber cupsole. A breathable OrthoLite® sockliner adds extra cushion.

TEXTILE

**S82861** night navy/night navy/ftwr white  
Size 28-35; 3-6.5 **69,95 €**

**CHILDREN**



B32706  
deliv.06/15



M20606  
deliv.06/15



M20607  
deliv.06/15

**STAN SMITH CF C**

The Stan Smith CF C is a little-kid version of the legendary Stan Smith with a leather upper, easy on-off comfort closures, soft terry and synthetic leather lining, and a breathable OrthoLite® sockliner. Classic perforated 3-Stripes and Stan Smith tongue logo.

LEATHER/SYNTHETICS

**M20607** ftwr white/ftwr white/green  
**M20606** black/black/ftwr white  
**B32706** ftwr white/ftwr white/bold pink  
Size 28-35 **44,95 €**

**INFANTS - SUPERSTAR**



S82714  
deliv.06/15

**SUPERSTAR 360 I**

A must-have for little ones from the most celebrated sneaker in the industry, the neoprene look adidas Superstar 360 I is a new concept shoe offering easy handling, comfort and adidas' most flexible outsole for kids. With an all-over triangle print, the easy-on, flexible one-piece upper has a wide, stretchable instep area and plush memory foam OrthoLite® sockliner. Classic Shelltoe design for durability and toe protection.

TEXTILE/SYNTHETICS

**S82714** bold blue/ftwr white/ftwr white  
Size 19-27 **44,95 €**



S82715  
deliv.06/15

**SUPERSTAR 360 I**

A must-have for little girls from the most celebrated sneaker in the industry, the neoprene look adidas Superstar 360 I is a new concept shoe offering easy handling, comfort and adidas' most flexible outsole for kids. With an all-over triangle print, the easy-on, flexible one-piece upper has a wide, stretchable instep area and plush memory foam OrthoLite® sockliner. Classic Shelltoe design for durability and toe protection.

TEXTILE/SYNTHETICS

**S82715** merlot f15-st /ftwr white/ftwr white  
Size 19-27 **44,95 €**

114 INFANTS  
RUNNING - ZX FLUX

INFANTS - RUNNING - ZX FLUX



M21300  
deliv.06/15



AF6261  
deliv.06/15

ZX FLUX I

Simple and modern, the ZX Flux K is a descendent of the iconic ZX 8000 running shoe, designed for kids. It has a one-piece mesh upper in fresh seasonal colours with welded TPU 3-Stripes. Features an injection EVA midsole, a rubber outsole and an OrthoLite® sockliner for comfort.  
TEXTILE/SYNTHETICS

**M21300** solar yellow/core black/ftwr white

**AF6261** flash red s15/core black/ftwr white

Size 19-27 **44,95 €**



B25644  
deliv.06/15



B25646  
deliv.06/15



B25645  
deliv.06/15

ZX FLUX EL I

A back-to-school must have, the ZX Flux EL I is a descendent of the iconic ZX 8000 running shoe sized down especially for little feet. The shoe has a one-piece mesh upper, an OrthoLite® sockliner and elastic laces for easy on and off. Finished with an injection EVA midsole and welded 3-Stripes.  
TEXTILE/SYNTHETICS

**B25644** oxford blue f15-st/fade ink f15-st/ftwr white

**B25646** mgh solid grey/carbon s14/ftwr white

**B25645** joy s13/peach pink f15-st/ftwr white

Size 19-27 **44,95 €**



B25649  
deliv.07/15



B25650  
deliv.07/15

ZX FLUX EL I

Simple and modern, the ZX Flux EL I keeps it real with authentic lines and fresh updates for tiny feet. The satin upper features an eye-catching alllover cheetah print and OrthoLite® sockliner for comfort. Elastic laces for easy on and off, EVA midsole, welded 3-Stripes and classic rubber outsole.  
TEXTILE/SYNTHETICS

**B25649** core black/core black/ftwr white

Size 19-27 **49,95 €**

ZX FLUX EL I

Simple and modern, the ZX Flux EL I keeps it real with authentic lines and fresh updates for tiny feet. The girly satin upper features a fun alllover hibiscus print and an OrthoLite® sockliner for comfort. Elastic laces for easy on and off, EVA midsole, welded 3-Stripes and classic rubber outsole.  
TEXTILE/SYNTHETICS

**B25650** core black/core black/ftwr white

Size 19-27 **49,95 €**



S82614  
 deliv.07/15

**ZX FLUX EL I**

Simple and modern, the ZX Flux EL I keeps it real with authentic lines and fresh updates for tiny feet. The satin upper has an allover black and white snake print, an OrthoLite® sockliner for comfort and elastic laces for easy on and off. Injection EVA midsole, welded 3-Stripes and classic rubber outsole.

TEXTILE/SYNTHETICS

**S82614** core black/core black/tomato f15-st  
 Size 19-27 **49,95 €**



B24719  
 deliv.06/15

**ZX FLUX MILLENIUM FALCON EL I**

The most iconic Star Wars™ spaceship in the galaxy comes to life with the ZX Flux Millennium Falcon EL I. The upper's print colours and reflective stripes give it a steely spaceship, futuristic look. Wicking OrthoLite® sockliner and an EVA tooled outsole keep toddlers' feet comfortable.

TEXTILE/SYNTHETICS

**B24719** core black/reflective/ftwr white  
 Size 19-27 **54,95 €**

**INFANTS - RUNNING - TUBULAR**



B25574  
 deliv.08/15

**ZX FLUX NPS UPDT ODDITY CF I**

A little outdoor adventure comes to the streets for toddlers. Part of the Oddity Sneaker Pack, the colourful ZX Flux NPS UPD ODDITY CF I features neoprene sock construction with a comfort closure and reflective details on the full mesh upper. This infant's shoe has welded 3-Stripes, an OrthoLite® footbed, injection midsole and a rubber outsole.

TEXTILE/SYNTHETICS

**B25574** core black/solar blue2 s14/solar yellow  
 Size 19-27 **49,95 €**



B25543  
 deliv.06/15

**TUBULAR I**

Inspired by fashion and rooted in the sporty tradition of late '80s and '90s shoes, the Tubular Runner I is built with a higher cut sock construction featuring a one-tone neoprene upper which has welded synthetic and leather overlays, and a contrast-colour lining. A bright white EVA midsole and OrthoLite® sockliner cushions the ride and keeps little feet fresh.

TEXTILE/SYNTHETICS

**B25543** core black/core black/ftwr white  
 Size 19-27 **54,95 €**

**INFANTS - RUNNING**



S81479  
 deliv.06/15

**TUBULAR I**

Inspired by fashion and rooted in the sporty tradition of late '80s and '90s shoes, the Tubular Runner I is built with a higher cut sock construction featuring an allover hibiscus print neoprene upper which has welded synthetic and leather overlays. A bright white EVA midsole and OrthoLite® sockliner cushions the ride and keeps little feet fresh.

TEXTILE/SYNTHETICS

**S81479** core black/core black/ftwr white  
 Size 19-27 **54,95 €**



B25586  
 deliv.08/15

**ZX 500 ODDITY CF I**

The 1984 ZX 500 runner's stunning, bio-mechanically correct design is now available for toddlers. Part of the oddity sneaker pack, the ZX 500 Oddity CF I's mesh upper is boldly coloured from tooling to lace tip, with a mix of faux suede and synthetic leather overlays. Breathable OrthoLite® sockliner, and comfort closures for easy on and off.

TEXTILE/SYNTHETICS

**B25586** core black/flash red s15/core black  
 Size 19-27 **39,95 €**



INFANTS - STAN SMITH



B20609  
deliv.06/15

STAN SMITH CF I

Because they are never too young for a legend, the Stan Smith CF I has a leather upper, comfort closures, soft terry and synthetic leather lining, and a breathable OrthoLite® sockliner. Classic perforated 3-Stripes and Stan Smith tongue logo.

LEATHER/SYNTHETICS

**B20609** ftwr white/ftwr white/green

**B32704** ftwr white/ftwr white/bold pink

Size 19-27

**39,95 €**



B32704  
deliv.06/15



B24613  
deliv.08/15

STAN SMITH VULC CF I

With its vulcanised look cupsole and lightweight build, the Stan Smith Vulc CF I is a casual and stylish refresh of an original court classic. Sized just for little ones, it features a mesh-lined ripstop upper with allover cheetah print, embroidered 3-Stripes and comfort closures. OrthoLite® sockliner keeps tiny feet cosy.

TEXTILE/SYNTHETICS

**B24613** core black/ftwr white/ftwr white

Size 19-27

**44,95 €**



S81612  
deliv.08/15

STAN SMITH VULC CF I

With its vulcanised look cupsole and lightweight build, the Stan Smith Vulc CF I is a casual and stylish refresh of an original court classic. Sized just for little ones, it features a mesh-lined ripstop upper with allover floral print, embroidered 3-Stripes and comfort closures. OrthoLite® sockliner keeps tiny feet cosy.

TEXTILE/SYNTHETICS

**S81612** night navy/night navy/ftwr white

Size 19-27

**44,95 €**



Image not available

B24725  
deliv.06/15

STAN SMITH AT-AT CF I

Combining the most iconic court shoe with Star Wars™, the Stan Smith AT-AT CF I has arrived. Lenticular rubber on the upper makes the Star Wars™ figures walk when toddlers move. Easy hook-and-loop closure and OrthoLite® sockliner.

SYNTHETICS

**B24725** core black/core black/core black

Size 19-27

**54,95 €**

INFANTS - BASKETBALL



S82873  
deliv.07/15

VERITAS MID I

Archival inspiration gets contemporary details and updates in the Veritas Mid EL I. Sized for little ones and built for comfort this shoe features a two-tone mesh upper, welded 3-Stripes and a convenient elastic lace closure. An EVA midsole, rubber cupsole and a breathable OrthoLite® sockliner add extra cushion.

TEXTILE

**S82873** bold blue/core black/ftwr white

Size 19-27

**49,95 €**



S82876  
deliv.08/15

**VERITAS MID I**

Archival inspiration gets contemporary details and updates in the Veritas Mid EL I. Sized for little ones and built for comfort, this shoe features a baseball satin upper with fun allover floral print, welded 3-Stripes and a convenient elastic lace closure. An EVA midsole, rubber cupsole and a breathable OrthoLite® sockliner add extra cushion.

TEXTILE

**S82876** ftwr white/core black/ftwr white  
Size 19-27 **49,95 €**



S82875  
deliv.08/15

**VERITAS MID I**

Archival inspiration gets contemporary details and updates in the Veritas Mid EL I. Sized for little ones and built for comfort, this shoe features a mesh upper with cool allover snake print, welded 3-Stripes and a convenient elastic lace closure. An EVA midsole, rubber cupsole and a breathable OrthoLite® sockliner add extra cushion.

TEXTILE

**S82875** night navy/night navy/ftwr white  
Size 19-27 **49,95 €**



B25599  
deliv.07/15

**FORUM MID SNAKE EL I**

A fresh take for baby on the 1989 icon, the premium leather upper of the Forum Mid Snake I sports a padded ankle and an iconic strap done in snakeskin suede. Synthetic leather 3-Stripes, a rubber outsole and breathable OrthoLite® sockliner finish the look. Part of the Snake sneaker pack.

COATED LEATHER/SYNTHETICS

**B25599** ftwr white/core black/ftwr white  
Size 19-27 **54,95 €**



M25303  
deliv.06/15

**TOP TEN HI I**

A fresh one-to-one re-release of a basketball shoe that ruled the courts in the '70s and '80s. This Top Ten Hi I features a full leather upper, a semi-shiny synthetic ankle insert, rubber cupsole and the original padded tongue with Top Ten logo. An OrthoLite® sockliner keeps little ones extra comfy.

LEATHER/SYNTHETICS

**M25303** ftwr white/dark blue/red  
Size 19-27 **44,95 €**



B25509  
deliv.06/15

**TOP TEN HI I**

A fresh one-to-one re-release of a basketball shoe that ruled the courts in the '70s and '80s. This Top Ten Hi I features a full leather upper, a semi-shiny synthetic ankle insert, rubber cupsole and the original padded tongue with Top Ten logo. An OrthoLite® sockliner keeps little ones extra comfy.

LEATHER/SYNTHETICS

**B25509** ftwr white/peach pink f15-st/collegiate navy  
Size 19-27 **44,95 €**

CRIBS



B24101  
deliv.06/15

**STAN SMITH CRIB**

The Stan Smith Crib is the smallest version of the most iconic court model: the "Stan Smith" . It features perforated 3-Stripes, elastic laces, a cribby leather upper and the Stan Smith heel tab to keep the iconic look of the original. Made with a wide opening and a soft woven outsole with an anti-slip rubber print.

LEATHER/SYNTHETICS

**B24101** ftwr white/ftwr white/green

**S82618** ftwr white/ftwr white/bold pink

Size 16-21

**29,95 €**



S82618  
deliv.06/15



**Image not available**

AF4595  
deliv.06/15

**ZX FLUX CRIB**

Simple and modern, the ZX Flux Crib is the smallest version of the ZX Flux, styled after the iconic ZX 8000 running shoe. It has a one-piece mesh upper with a wide opening and elastic laces for easy on and off, plus anti-slip rubber print on the woven outsole and a rubber toe cap for extra protection. With welded 3-Stripes and a comfy OrthoLite® sockliner.

**AF4595** joy s13/peach pink f15-st/ftwr white

**AF4596** oxford blue f15-st/fade ink f15-st/ftwr white

Size 16-21

**29,95 €**



**Image not available**

AF4596  
deliv.06/15



120 ACC  
BECKENBAUER

ACCESSORIES Q3

ACC - BECKENBAUER



**BECKENBAUER KAI5ER BEANIE**

adidas celebrates its 50-year relationship with Franz Beckenbauer by highlighting the important chapters in his life. The Beckenbauer Kai5er Beanie takes adidas' signature logo beanie and adds a "Kai5er" and a Trefoil logo, embroidered in melange yarn for a 3D effect.

100% Polyacrylics, plain knit, 359g

**AB2774** medium grey heather  
Size OSFW; OSFM; OSFL **24,95 €**



AB2774  
deliv.09/15



**BB BEANIE**

adidas celebrates its 50-year relationship with Franz Beckenbauer by highlighting the important chapters in his life. The Beckenbauer Beanie is inspired by Beckenbauer's German national football triumphs, with an engineered graphic on the crown and a woven label in front.

100% Polyacrylics, plain knit, 359g

**AB2772** white  
Size OSFW; OSFM **27,95 €**



AB2772  
deliv.09/15



**BB AIRLINER**

adidas celebrates its 50-year relationship with Franz Beckenbauer by highlighting the important chapters in his life. The Beckenbauer Airliner bag is inspired by the bag adidas created for Beckenbauer in the '70s during his time with the New York Cosmos. The boxy polyurethane design has a polyester lining, plastic trim, and the same logo found on the Beckenbauer shoe.

100% Polyurethane, Leather (imitation)

12 x 38 x 28 cm

21.1 l

**AB2766** green  
Size NS **54,95 €**



AB2766  
deliv.09/15

ACC - SNAKE Pack



**BACKPACK SNAKE**

This Snake Backpack flashes a premium polyurethane build with a snakeskin touch and plastic zip close. Lined it polyester, it has three outside zipper pockets, a separate laptop compartment and adjustable shoulder straps. A debossed badge links this bag to the adidas Superstar, showing off the shoe's iconic tongue label.

100% Thermoplastic Polyurethane, foam

15 x 30 x 47 cm

24.6 l

**AB2872** black/white  
Size NS **79,95 €**



AB2872  
deliv.08/15



**AIRLINER SNAKE**

This Snake Airliner flashes a premium polyurethane build with a snakeskin touch and a plastic zip close. It has a roomy main compartment, separate laptop compartment, and front zipper pocket. A debossed badge links this bag to the adidas Superstar, showing off the shoe's iconic tongue label.

100% Thermoplastic Polyurethane, foam

10 x 40 x 29 cm

18 l

**AB2865** black/white  
Size NS **64,95 €**



AB2865  
deliv.08/15



**SHOPPER SNAKE**

This Snake Shopper flashes a premium polyurethane build with a snakeskin touch and plastic zip close. It has a roomy polyester-lined main compartment, front zipper pocket and inside phone pocket. May be carried by the handles or the detachable, adjustable shoulder strap. A debossed badge links this bag to the adidas Superstar, showing off the shoe's iconic tongue label.

100% Thermoplastic Polyurethane, foam

7.5 x 45 x 40 cm

19.5 l

**AB2863** black/white  
Size NS **54,95 €**



AB2863  
deliv.08/15



AB2876  
deliv.08/15

**5 PANEL CAP SNAKE**

This Five-Panel Snake Cap a premium polyurethane build with a snakeskin touch. A debossed badge links this bag to the adidas Superstar, showing off the shoe's iconic tongue label.

100% Thermoplastic Polyurethane, foam, 100% Polyester, mesh

**AB2876** black

Size OSFW; OSFM; OSFL

**27,95 €**

**ACC - WHITE Pack**



AB3856  
deliv.07/15

**SEASACK WHITE**

In sophisticated all-white, the White Seasack mixes subtle animal-skin debossing to add style and texture. The nautical-inspired bag has a main polyester-lined compartment with drawstring rope closure, a separate laptop compartment, and an interior pocket. Includes an adjustable cotton webbing shoulder strap and a debossed logo badge.

14 x 31 x 46 cm  
19.85 l

**AB3856** white

Size NS

**69,95 €**



AB3752  
deliv.06/15

**SHOPPER WHITE**

In sophisticated all-white, the White Shopper mixes subtle animal-skin debossing to add style and texture. The tote has a main polyester-lined compartment, interior pocket and a front zipper pocket. Includes handles, an adjustable and detachable shoulder strap, and a debossed logo badge.

7.5 x 40 x 45 cm  
21.19 l

**AB3752** white

Size NS

**54,95 €**

**ACC - BACK TO SCHOOL**



AC0510  
deliv.06/15

**5 PANEL CAP WHITE**

In sophisticated all-white, the White Five-Panel Cap mixes subtle animal-skin debossing to add style and texture. Includes a metal adjuster and a debossed logo badge.

100% Polyester, mesh

**AC0510** white

Size OSFW; OSFM; OSFL

**27,95 €**



AB3909  
deliv.08/15

**TONGUE LABELS BACKPACK+**

The top half of this adidas Originals Graphic Backpack features a colourful print made up of tongue labels from some of adidas' most iconic shoes. The pack has a polyester lining, an interior organizer and two main compartments. A durable faux leather base resists scratches.

100% Polyester, plain weave  
15 x 30 x 47 cm  
22.4 l

**AB3909** black/multicolor/white

Size NS

**44,95 €**



**TONGUE LABEL AIRLINER**

This adidas Originals Graphic Airliner bag features a colourful print made up of tongue labels from some of adidas' most iconic shoes. The pack has a polyester lining, a front pocket and two main compartments. With a zip faux leather lid.

100% Polyurethane, leather (imitation)  
10 x 40 x 29 cm  
17.4 l

**AB3911** multicolor/black/white  
Size NS **54,95 €**



AB3911  
deliv.08/15



**TONGUE LABELS SNAPBACK CAP**

This adidas Originals Graphic Snap-Back Cap features a colourful print made up of tongue labels from some of adidas' most iconic shoes.

80% Polyester/20% Cotton, plain weave, 110g, 100% Polyester, mesh, 60g, 100% Polyester, plain weave, 120g, 100% Polyester, mesh

**AB3953** black/multicolor  
Size OSFY; OSFW; OSFM; OSFL **24,95 €**



AB3953  
deliv.08/15



**TONGUE LABELS PRINTED SOCK**

These Printed Socks combine the 3-Stripes with a colourful graphic made up of tongue labels from some of adidas' most iconic shoes.

**AB3907** multicolor/black/white  
Size 27-30; 31-34; 35-38; 39-42; 43-46 **9,95 €**



AB3907  
deliv.08/15

**ACC - CAMO Pack**



**ODDITY CAMO BACKPACK**

The adidas Originals Superstar Essentials Backpack combines classic camo with a fresh pop of colour on top. Built with two main compartments, a front zip pocket and herringbone webbing details. Includes an adidas Originals woven label in front.

100% Polyester, plain weave, 278g  
15 x 30 x 47 cm  
21.19 l

**AB3886** bold blue/multicolor/black  
Size NS **39,95 €**



AB3886  
deliv.08/15



**ODDITY CAMO CITY SHOPPER**

The adidas Originals Superstar City Shopper combines a pop-colour tote with classic camo on top for a fresh take on a classic bag. Built with a main compartment, a front zip pocket and herringbone webbing straps. Includes an adidas Originals woven label in front.

100% Polyester, plain weave, 278g  
7.5 x 45 x 40 cm  
19.05 l

**AB3875** dark violet f12/multicolor/collegiate orange  
Size NS **44,95 €**



AB3875  
deliv.08/15



**ODDITY CAMO GYMSACK**

The adidas Originals Superstar Essentials Gym Sack combines classic camo with a pop of solid colour on top for a fresh take on a classic bag. Built with a main compartment, a side zip pocket and drawcord straps. Includes an adidas Originals woven label in front.

100% Polyester, plain weave  
0 x 36 x 44 cm  
13.62 l

**AB3883** multicolor/bright cyan  
Size NS **14,95 €**



AB3883  
deliv.08/15



AB3884  
deliv.08/15

**ODDITY CAMO FESTIVAL BAG**

The adidas Originals Superstar Festival Bag combines classic camo with fresh pop-colour zips. Built with a main compartment, a front zip pocket and an inside organiser. Includes an adidas Originals woven label in front.

2 x 12 x 16 cm  
0.7 l

**AB3884** multicolor/collegiate navy/berry f15-st  
Size NS **17,95 €**



AB3934  
deliv.08/15

**ODDITY CAMO SNAPBACK CAP**

The adidas Originals Superstar Snap-Back Cap is styled with classic camo on the flat brim for a fresh take on a baseball hat. Finished with an adidas Originals woven label in front.

100% Cotton, twill, 278g, 80% Polyester/20% Cotton, plain weave, 110g, 100% Polyester, mesh

**AB3934** carbon s14/multicolor/dark violet f12  
Size OSFY; OSFW; OSFM; **24,95 €**  
OSFL

**ACC - FLORAL Pack**



AB3887  
deliv.08/15

**ODDITY CAMO PRINTED SOCK**

The adidas Originals Superstar Camouflage Socks combine a printed camo pattern with bright colourblocking and printed 3-Stripes on the toes for a fun, fresh take on a wardrobe essential.

**AB3887** bright yellow/bold blue/bright cyan  
Size 27-30; 31-34; 35-38;  
39-42; 43-46 **9,95 €**



AB3870  
deliv.07/15

**DARK FLORAL BACKPACK**

A dark floral print gives this Backpack a tropical vibe. Built with two main compartments, a front zip pocket and an inside organiser. Finished with contrast herringbone webbing on the front panel and an adidas Originals label in front.

100% Polyester, plain weave, 278g  
15 x 30 x 47 cm  
21.19 l

**AB3870** multicolor/night indigo/white  
Size NS **44,95 €**



124 ACC  
FLORAL Pack



**DARK FLORAL GYMSACK**

A dark floral print gives this Gym Sack a tropical vibe. Built with a main compartment, a side zip pocket and drawcord straps. Finished with an adidas Originals label in front.

100% Polyester, plain weave  
0 x 36 x 44 cm  
13.62 l

**AB3871** multicolor/night indigo/white  
Size NS **14,95 €**



AB3871  
deliv.07/15



**DARK FLORAL FESTIVAL BAG**

A dark floral print gives this Festival Bag a tropical vibe. Built with a main compartment, a front zip pocket and an inside organiser. Finished with an adidas Originals label in front.

100% Polyester, plain weave, 278g  
2 x 12 x 16 cm  
0.7 l

**AB3894** multicolor/night indigo  
Size NS **17,95 €**



AB3894  
deliv.07/15



**DARK FLORAL SNAPBACK CAP**

A dark floral print gives this Graphic Snap-Back Cap a tropical vibe. The flat brim design is built with a solid bill and a mesh sweatband for comfort. Finished with an adidas Originals label in front.

100% Polyester, plain weave, 120g

**AB3952** night indigo/multicolor/white  
Size OSFY; OSFW; OSFM; OSFL **24,95 €**



AB3952  
deliv.07/15



**DARK FLORAL 5 PANEL CAP**

A dark floral print gives this Cap a tropical vibe. The five-panel design includes a mesh sweatband for comfort and an adidas Originals label in front.

100% Polyester, plain weave, 120g

**AB3944** night indigo/multicolor/white  
Size OSFY; OSFW; OSFM; OSFL **24,95 €**



AB3944  
deliv.07/15



AB3908  
deliv.07/15

**DARK FLORAL PRINTED SOCK**

The Printed Socks combine a dark tropical print with solid colourblocking and 3-Stripes for a fun, stylish take on a wardrobe essential.

**AB3908** night indigo/multicolor/white  
Size 27-30; 31-34; 35-38; 39-42; 43-46 **9,95 €**



AB3003  
deliv.08/15

**AIRLINER PARIS**

The Paris Airliner shows off a colourful hand-scribbled adidas monogram inspired by the Paris art scene. Done in canvas with plastic trim, the bag has a laptop compartment, front zip pocket, and inside organizer. Includes a webbing handle and an adjustable, detachable webbing shoulder strap.

100% Cotton, plain weave, 280g  
10 x 29 x 46 cm  
16.41 l

**AB3003** multicolor  
Size NS **54,95 €**



AB2999  
deliv.08/15

**BEACHSHOPPER PARIS**

The colourful design of the Paris Beach Shopper is inspired by the Paris art scene. Done in canvas with a patent patchwork Trefoil, the tote has an inside organizer and webbing handles and closes with a plastic zipper.

100% Cotton, plain weave, 280g  
14 x 38 x 60 cm  
16.41 l

**AB2999** oxford blue f15-st  
Size NS **44,95 €**



AB3008  
deliv.07/15

**BOWLING BAG LA**

A mix of snake textures and bold adidas lettering bring a West Coast street vibe to this LA Bowling Bag. The bag is built with two compartments, an inside organizer, webbing handles and metal trims.

12 x 39 x 27 cm  
13 l

**AB3008** multicolor  
Size NS **44,95 €**



AB3007  
deliv.07/15

**CLUTCH LA**

A mix of snake textures brings a West Coast street vibe to this LA Clutch. This purse holds the essentials and can be worn using the detachable shoulder strap or on the wrist loop. Lined in PES and finished with plastic trim and a rubber-print logo.

2 x 23 x 14 cm  
0.8 l

**AB3007** multicolor  
Size NS **29,95 €**



AB3006  
deliv.07/15

**WALLET LA**

A mix of snake textures and a bold adidas Originals logo bring a West Coast street vibe to this LA Wallet. The wallet is built with coin and bill compartments and finished with metal trims and a woven Trefoil label.

0 x 19 x 10 cm  
0.2 l

**AB3006** multicolor  
Size NS **24,95 €**

126

ACC

KIDS - Star Wars

ACCESSORIES Q3

ACC - KIDS - Star Wars

**BACKPACK STARWARS MILLENNIUM FALCON**

This Star Wars™ Q3 Backpack is sized just for little Jedis and features a graphic print of the Millennium Falcon. Built with a front zipper pocket, mesh side pockets, and comfy padded adjustable shoulder straps. Finished with a woven adidas Originals Star Wars™ label.

100% Polyester, plain weave

12 x 22 x 31 cm

11.5 l

**AB2924** black/multicolor

Size NS

**29,95 €**



AB2924  
deliv.06/15

**BACKPACK STARWARS AT AT**

This Star Wars™ Q4 Backpack is sized just for little Jedis and features a graphic print of the AT-AT Walker. Built with a front zipper pocket, mesh side pockets, and comfy padded adjustable shoulder straps. Finished with a woven adidas Originals Star Wars™ label.

100% Polyester, plain weave, 278g

12 x 22 x 31 cm

11.6 l

**AB2922** black/white

Size NS

**29,95 €**



AB2922  
deliv.06/15



## APPAREL



AA3861  
deliv.09/15

**MYSTIC MOON TANK**

This season adidas and British singer and style icon Rita Ora collaborate to introduce the Mystic Moon Pack, featuring an allover print inspired by the surface of the moon. The print glows on this Mystic Moon Tank, which has a feminine skinny racer back with stylish raw edges and a bold logo treatment on the bottom.

100% Polyester, single jersey, 168g

**AA3861** multicolor

Size 32-46

**34,95 €**



AA3852  
deliv.09/15

**MYSTIC MOON LOGO TEE**

This season adidas and British singer and style icon Rita Ora collaborate to introduce the Mystic Moon Pack, featuring a print inspired by the surface of the moon. The Mystic Moon Logo Tee is made in soft cotton jersey with a stacked Trefoil on the front.

100% Cotton, single jersey, 140g

**AA3852** black

Size 32-46

**34,95 €**



AA3853  
deliv.09/15

**MYSTIC MOON SWEATER**

This season adidas and British singer and style icon Rita Ora collaborate to introduce the Mystic Moon Pack, featuring an allover print inspired by the surface of the moon. Bold logo lettering on solid raglan sleeves and a big stacked Trefoil in back call out the adidas DNA of the Mystic Moon Sweater.

100% Polyester, tricot, 210g

**AA3853** black

Size 32-46

**69,95 €**



AA3860  
deliv.09/15

**MYSTIC MOON SUPERGIRL TT**

This season adidas and British singer and style icon Rita Ora collaborate to introduce the Mystic Moon Pack, featuring an allover print inspired by the surface of the moon. The Mystic Moon Track Top is done in tricot with an iconic adidas track top fit and collar, along with front pockets and a stacked Trefoil on the chest.  
100% Polyester, tricot, 210g

AA3860 black

Size 32-46

79,95 €



AA3864  
deliv.09/15

**MYSTIC MOON TT VEST**

This season adidas and British singer and style icon Rita Ora collaborate to introduce the Mystic Moon Pack, featuring an allover print inspired by the surface of the moon. The Mystic Moon Track Top Vest is made in tricot in a B-ball-inspired shape with a drawstring hood, kangaroo pockets, and stacked Trefoil on the full-zip front.  
100% Polyester, tricot, 210g

AA3864 multicolor

Size 32-46

64,95 €



AA3854  
deliv.09/15

**MYSTIC MOON HOODIE**

This season adidas and British singer and style icon Rita Ora collaborate to introduce the Mystic Moon Pack, featuring an allover print inspired by the surface of the moon. The Mystic Moon Hoodie is done in iconic tricot with 3-Stripes on the sleeves and a kangaroo pocket.  
100% Polyester, tricot, 210g

AA3854 black

Size 32-46

79,95 €



AA3855  
deliv.09/15

**MYSTIC MOON CROP TT**

This season adidas and British singer and style icon Rita Ora collaborate to introduce the Mystic Moon Pack, featuring an allover print inspired by the surface of the moon. The softly padded Mystic Moon Crop Track Top combines this print with adidas lettering along the sleeves and front welt pockets that call out its adidas DNA. In a slightly cropped fit.

100% Polyester, plain weave, 55g

**AA3855** black  
Size 32-46 **79,95 €**



AA3863  
deliv.09/15

**MYSTIC MOON TEE DRESS**

This season adidas and British singer and style icon Rita Ora collaborate to introduce the Mystic Moon Pack, featuring an allover print inspired by the surface of the moon. The Mystic Moon Track Top Dress is constructed with feminine princess seams in neoprene-look tricot. With printed 3-Stripes on the sleeves and a full skirt with a raw edge hem.

100% Polyester, interlock, 330g

**AA3863** black  
Size 32-44 **89,95 €**



AA3862  
deliv.09/15

**MYSTIC MOON SHORTS**

This season adidas and British singer and style icon Rita Ora collaborate to introduce the Mystic Moon Pack, featuring an allover print inspired by the surface of the moon. These Mystic Moon Shorts are done in tricot in a classic running shape with an elastic waist and front zip pockets.

100% Polyester, tricot, 210g

**AA3862** multicolor  
Size 30-44 **49,95 €**



AA3857  
deliv.09/15

**MYSTIC MOON LEGGINGS**

This season adidas and British singer and style icon Rita Ora collaborate to introduce the Mystic Moon Pack, featuring an allover print inspired by the surface of the moon. These Mystic Moon Leggings have a tight sexy fit with 3-Stripes down the legs and an elastic waist.

87% Polyester/13% Elasthane, single jersey, 175g

**AA3857** multicolor  
Size 30-46 **34,95 €**

FOOTWEAR



S81616  
deliv.09/15

**HONEY 2.0 SlipOn W**

This season adidas and British singer and style icon Rita Ora collaborate to introduce the Mystic Moon Pack, featuring sparkling material inspired by the surface of the moon. The Honey 2.0 Slip On has an all-over silver foiled suede upper that flashes a reflective heel strap. With twill lining and a vulcanised rubber outsole.

LEATHER

**S81616** core black/core black/ftwr white  
Size 3.5-9.5 **89,95 €**



S81617  
deliv.09/15

**SUPERSTAR W**

This season adidas and British singer and style icon Rita Ora collaborate to introduce the Mystic Moon Pack, featuring sparkling material inspired by the surface of the moon. Debuting in 1970, the adidas Superstar was the first all-leather low basketball shoe. Updated for this special pack with an all-over leather upper with silver foiled suede 3-Stripes and heel patch.

LEATHER

**S81617** ftwr white/core black/ftwr white  
Size 3.5-9.5 **89,95 €**



S81618  
deliv.09/15

**STAN SMITH W**

This season adidas and British singer and style icon Rita Ora collaborate to introduce the Mystic Moon Pack, featuring sparkling material inspired by the surface of the moon. The Stan Smith gets dressed up for the pack in smooth leather with perforated 3-Stripes, reflective laces, silver foiled suede tongue and heel patch plus a rubber cupsole.

LEATHER

**S81618** core black/core black/ftwr white  
Size 3.5-9.5 **84,95 €**



S81619  
deliv.09/15

**M ATTITUDE UP**

This season adidas and British singer and style icon Rita Ora collaborate to introduce the Mystic Moon Pack, featuring sparkling material inspired by the surface of the moon. A hidden wedge heel brings glamour to the M Attitude Up. The upper is a mix of leather and synthetic leather with reflective laces, foiled suede detailing, a rubber cupsole and an oversize Trefoil on the tongue.

SYNTHETICS

**S81619** core black/core black/ftwr white  
Size 3.5-9.5 **109,95 €**



S81609  
deliv.09/15

**ZX FLUX W**

This season adidas and British singer and style icon Rita Ora collaborate to introduce the Mystic Moon Pack, featuring sparkling material inspired by the surface of the moon. The ZX Flux is a descendent of the iconic ZX 8000 running shoe in reflective material with silver foiled suede 3-Stripes and heel cage, and a compression-moulded EVA outsole.

SYNTHETICS

**S81609** core black/core black/ftwr white  
Size 3.5-9.5 **99,95 €**



## ACCESSORIES

**MYSTIC MOON SBC**

This season adidas and British singer and style icon Rita Ora collaborate to introduce the Mystic Moon Pack, featuring an allover print inspired by the surface of the moon. The Mystic Snapback Cap comes in polyester with raised rubber-print logos.

100% Cotton, twill, 278g, 100% Polyester, plain weave, 120g, 80% Polyester/20% Cotton, plain weave, 110g

**AB2764** black

Size OSFW; OSFM

**24,95 €**



AB2764  
deliv.09/15



## APPAREL

NIGO Q3

AB1536  
deliv.07/15**SERRATED STRIPE TEE**

Classic tee style gets the Nigo design treatment with the Serrated Stripe Tee. Fashioned with Nigo's iconic bear logo, this slim-fitting t-shirt combines bold, serrated striping with pocket embroidery and a Trefoil badge at the back right. 100% Cotton, single jersey, 180g

**AB1536** black/white

Size XS-2XL

**34,95 €**AB1547  
deliv.07/15**BEAR LOGO CREW**

Bringing adidas Originals style to a classic streetwear look, the Bear Logo Crew takes the Nigo collection by storm boldly placing Nigo's signature bear graphic on the front over a linear adidas read. This French terry cotton crew comes in a regular fit with a Trefoil badge on the sleeve. 100% Cotton, french terry

**AB1547** black**AB1546** medium grey heather

Size XS-2XL

**84,95 €**AB1546  
deliv.07/15AB1550  
deliv.07/15**SERRATED STRIPE HOODY**

Bringing adidas Originals style to a classic streetwear look, the Serrated Stripe Hoody takes the Nigo collection by storm showcasing bold printed stripes along with Nigo's signature bear logo. The classic full-zip silhouette is made from blended fleece in a slim fit with a kangaroo pocket. 100% Cotton, french terry

**AB1550** black

Size XS-2XL

**89,95 €**



AB1555  
deliv.09/15

**RETRO BEAR TRACKPANT**

Bringing adidas Originals style to a classic streetwear look, the Retro Bear Track Pants take the Nigo collection by storm placing the designer's signature bear tape down the legs of these classic cotton/poly sweats. An embroidered Trefoil and front zip pockets cap the design. 52% Cotton/48% Polyester, doubleknit, 290g

**AB1555** black  
Size XS-2XL **79,95 €**



AB1608  
deliv.07/15

**COACH JACKET**

Bringing adidas Originals style to a classic streetwear look, the Coach Jacket takes the Nigo collection by storm sporting a flocked Nigo bear graphic on the front. This snap front coach is tricot-lined with a drawcord hem and comfort close elastic cuffs.

100% Polyester, plain weave  
**AB1608** black  
Size XS-2XL **79,95 €**

**ACCESSORIES**



AC1813  
deliv.07/15

**BACKPACK BLACK**

Bringing adidas Originals style to a classic streetwear look, the Black Backpack takes the Nigo collection by storm. In durable polyester weave it includes padded shoulder straps, a roomy interior with a padded laptop compartment, a front zip pocket, branded trims and Nigo's bear logo on front.

100% Polyester, plain weave, 278g  
15 x 32 x 42 cm  
24.97 l  
**AC1813** black  
Size NS **39,95 €**

Index	Name	Page	Index	Name	Page	Index	Name	Page	Index	Name	Page
A97085	OPEN HEM SST TP	40	AB2075	SLIM SUPERGIRL TP	28	AB2612	LA COLORBLOCK STR LEGGING	14	AB2830	TRACK DENIM PADDED SPRSTR	25
A97086	OPEN HEM SST TP	40	AB2076	SUPERSTAR TT	28	AB2614	LA CREW PRINTED SWEATER	12	AB2839	TRACK DENIM SWEATSHIRT	24
AA3852	MYSTIC MOON LOGO TEE	128	AB2078	3 STRIPE HOODY	27	AB2615	LA CREW SWEATER	11	AB2840	TRACK DENIM SWEATSHIRT	24
AA3853	MYSTIC MOON SWEATER	128	AB2079	3 STRIPES TEE	25	AB2616	LA HOODED DRESS	14	AB2863	SHOPPER SNAKE	120
AA3854	MYSTIC MOON HOODIE	129	AB2083	BECKENBAUER SWEATSHIRT	26	AB2618	LA LOGO TANK TOP	9	AB2865	AIRLINER SNAKE	120
AA3855	MYSTIC MOON CROP TT	130	AB2092	3 STRIPE HOODY	27	AB2622	LA PRINT SKIRT	14	AB2866	BOMBER JACKET	30
AA3857	MYSTIC MOON LEGGINGS	130	AB2093	3 STRIPES TEE	25	AB2623	LA PRINTED TANK DRESS	14	AB2872	BACKPACK SNAKE	120
AA3860	MYSTIC MOON SUPERGIRL TT	129	AB2094	BECKENBAUER SWEATSHIRT	26	AB2624	LA PRINTED TANK TEE	9	AB2876	5 PANEL CAP SNAKE	121
AA3861	MYSTIC MOON TANK	128	AB2095	BIG LOGO TEE	10	AB2625	LA PRINTED STR LEGGING	15	AB2883	ALL-OVER PARKA	31
AA3862	MYSTIC MOON SHORTS	130	AB2096	FIREBIRD TT	13	AB2626	LA PRINTED W MIX TEE	10	AB2885	MATERIAL MIX VARSITY JACKET	30
AA3863	MYSTIC MOON TEE DRESS	130	AB2097	HOODED FLOCK FLEECE	18	AB2629	LA TRF LOGO PRINTED TEE	9	AB2888	WINTER COTTON PARKA	31
AA3864	MYSTIC MOON TT VEST	129	AB2098	NEW LEGGINGS	28	AB2632	LA VASITY PRINTED TRACKTOP	12	AB2889	WINTER COTTON PARKA	31
AA5386	Porsche To Be Driven T-Shirt	64	AB2100	NEW TREFOIL LOGO HOODIE	13	AB2633	LA VASITY TRACKTOP	12	AB2890	WINTER COTTON PARKA	31
AA5389	Porsche 1969 Graphic T-Shirt	64	AB2102	TREFOIL SWEATSHIRT	11	AB2634	LA PRINT SHORT	14	AB2915	TREFOIL SWEATSHIRT AO	11
AA7828	MATERIAL MIX PARKA	31	AB2144	PE WASHED CUFFED TP	23	AB2637	PARIS CROP TEE	16	AB2922	BACKPACK STARWARS AT AT	126
AB1536	SERRATED STRIPE TEE	134	AB2147	PE WASHED ZIP HOODIE	23	AB2639	PARIS HIGH WAIST LEGGING	18	AB2924	BACKPACK STARWARS	126
AB1546	BEAR LOGO CREW	134	AB2148	PE WASHED ZIP HOODIE	23	AB2641	PARIS LOGO CREW SWEATER	16		MILLENNIUM FALCON	
AB1547	BEAR LOGO CREW	134	AB2149	PE WASHED SWEATSHIRT	23	AB2643	PARIS PRINTED PLEATED DRESS	18	AB2926	CHIFFON TRACKPANT	28
AB1550	SERRATED STRIPE HOODY	134	AB2150	PE WASHED SWEATSHIRT	23	AB2647	PARIS PRINTED LEGGING	18	AB2999	BEACHSHOPPER PARIS	125
AB1555	RETRO BEAR TRACKPANT	135	AB2151	PE WASHED TEE	22	AB2649	PARIS PRINTED TRF LOGO TEE	16	AB3003	AIRLINER PARIS	125
AB1608	COACH JACKET	135	AB2152	PE WASHED TEE	22	AB2650	PARIS SOLID TP	18	AB3006	WALLET LA	125
AB1839	I SW ATAT TEE	76	AB2183	BIG LOGO TEE	15	AB2651	PARIS BK LOGO TT	17	AB3007	CLUTCH LA	125
AB1841	I SW MF TEE	76	AB2186	FLOCK TP FLEECE	29	AB2652	PARIS PRINTED TT	17	AB3008	BOWLING BAG LA	125
AB1844	I SW MF HFL	76	AB2189	TREFOIL SWEATSHIRT	17	AB2657	PARIS TRF LOGO TEE	15	AB3200	GONZ SHMOO FOIL TEE	67
AB1845	I SW ARCHIVE FB	77	AB2217	BECKENBAUER SWEATSHIRT	26	AB2659	BRLN TRF LOGO CREW SWEATER	20	AB3206	TRIPLE LOCK UP POCKET TEE	70
AB1847	I SW ATAT FB	76	AB2220	3 STRIPE HOODY	27	AB2661	BRLN EDGY STR TEE	19	AB3752	SHOPPER WHITE	121
AB1976	FARM LEGGINGS	8	AB2222	FAKE LEATHER JACKET	29	AB2668	BRLN LOGO PRINTED TEE	19	AB3856	SEASACK WHITE	121
AB1980	FARM BIG LOGO TEE	7	AB2228	3 STRIPES TEE	25	AB2669	BRLN LOGO 3 STR CREW SWEATER	20	AB3870	DARK FLORAL BACKPACK	123
AB1986	FARM SUPERSTAR TT	7	AB2229	J SS HFL TOP	73	AB2670	BRLN TRF LOGO H NECK TEE	20	AB3871	DARK FLORAL GYMSACK	124
AB1987	FARM LEGGINGS	9	AB2234	J SS LEGGINS	73	AB2671	BRLN HOODED DRESS	21	AB3875	ODDITY CAMO CITY SHOPPER	122
AB1989	FARM SWEATSHIRT	7	AB2239	J SS TEE	73	AB2678	BRLN LOGO 3-STR TT	21	AB3883	ODDITY CAMO GYMSACK	122
AB1990	FARM FB TP	8	AB2246	J SW MF HOODIE	75	AB2679	BRLN LOGO BADGE TT	21	AB3884	ODDITY CAMO FESTIVAL BAG	123
AB1995	FARM TANK	7	AB2247	J SW ARCHIVE T	75	AB2680	BRLN LOGO 3-STR TP	22	AB3886	ODDITY CAMO BACKPACK	122
AB1996	FARM TEE DRESS	9	AB2252	J SW ATAT TEE	74	AB2682	BRLN LOGO BADGE TEE	19	AB3887	ODDITY CAMO PRINTED SOCK	123
AB1998	FARM FB TT	8	AB2253	J SW MF TEE	74	AB2683	BRLN LOGO LEGGING	21	AB3894	DARK FLORAL FESTIVAL BAG	124
AB1999	FARM TANK	8	AB2257	J SW ATAT TOP	74	AB2685	BRLN LOGO 3-STR SKIRT	22	AB3907	TONGUE LABELS PRINTED SOCK	122
AB2013	3 STRIPE HOODY	27	AB2265	J SW ARCHIVE FB	75	AB2687	BRLN SLIM FT TP	22	AB3908	DARK FLORAL PRINTED SOCK	125
AB2014	3 STRIPES TEE	25	AB2281	FASHION GRAPHIC SS TEE	29	AB2764	MYSTIC MOON SBC	132	AB3909	TONGUE LABELS BACKPACK+	121
AB2015	BECKENBAUER SWEATSHIRT	26	AB2282	FASHION GRAPHIC SS TEE	29	AB2766	BB AIRLINER	120	AB3911	TONGUE LABEL AIRLINER	122
AB2016	FIREBIRD TT	27	AB2288	FASHION GRAPHIC SS TEE	30	AB2772	BB BEANIE	120	AB3934	ODDITY CAMO SNAPBACK CAP	123
AB2017	HOODED FLOCK	13	AB2475	STAN_POLO	43	AB2774	BECKENBAUER KAI5ER BEANIE	120	AB3944	DARK FLORAL 5 PANEL CAP	124
AB2019	TREFOIL SWEATSHIRT	26	AB2476	STAN_POLO	43	AB2819	BRLN TRF LOGO H NECK TEE	20	AB3952	DARK FLORAL SNAPBACK CAP	124
AB2070	FAKE LEATHER JACKET	29	AB2477	STAN TT	44	AB2824	TRACK DENIM CR SPRSTR	24	AB3953	TONGUE LABELS SNAPBACK CAP	122
AB2071	FIREBIRD TP	28	AB2480	MARATHON WB	49	AB2825	TRACK DENIM CUFFED TP	25	AB4899	LONG PADDED JACKET	31
AB2072	FLOCK TP	15	AB2611	LA COLOR BLOCK SHORT	14	AB2827	TRACK DENIM CUFFED TP	25	AB6553	STAN_CREW WOVEN	43

Index	Name	Page	Index	Name	Page	Index	Name	Page	Index	Name	Page
AB7451	FB PORTRAIT Tee	35	AB7611	REFLECTIVE CAMO PONCHO	57	AB7846	QUARTERBACK JERSEY SNAKE	46	AB9560	SST GRAPHIC TEE	63
AB7452	FB PORTRAIT Tee	35	AB7612	OVERSIZED POCKET TEE	54	AB7849	FOOTBALL JERSEY	45	AB9561	SST GRAPHIC TEE	63
AB7454	FB QUOTE CREW	37	AB7615	OVERSIZED POCKET TEE	54	AB7860	QUILTED SST	42	AB9562	SST GRAPHIC TEE	63
AB7455	TRICOT TT (red/white)	37	AB7619	ST MOD BASE LAYER	55	AB7862	QUILTED SST	42	AB9572	STREET LOGO SWEATPANT	65
AB7456	TRICOT TT (red/white)	37	AB7623	ST MOD CREW	55	AB7883	SST WINDBREAKER	41	AB9577	STREET LOGO CREW	65
AB7459	90S DFB JERSEY	36	AB7624	ST MOD CREW	55	AB7926	TRIPLE LOCK UP HENLEY	69	AB9579	SERRATED GRAPHIC TEE	66
AB7460	90S DFB TEE	38	AB7625	LONG LINE FZ HOODY	56	AB7928	TEAM 3 TEE	68	AB9580	SERRATED GRAPHIC TEE	66
AB7461	OG DFB CREW	38	AB7626	LONG LINE FZ HOODY	56	AB7931	SHMOO SHADOW TEE	69	AB9581	SERRATED GRAPHIC TEE	66
AB7464	K.O.N.Y TEE	35	AB7628	ST MOD HOODY	55	AB7934	DUSK 2 DARKNESS TEE	68	AB9583	Originals Girl tee	62
AB7465	K.O.N.Y TEE	35	AB7632	FOOTBALLER PANT	56	AB7945	WIND JACKET 2.0	73	AB9584	Originals Girl tee	62
AB7466	OG POLO JERSEY	36	AB7633	FOOTBALLER PANT	56	AB7950	COACHES JACKET 2.0	72	AB9585	45 SST TEE	62
AB7467	OG POLO JERSEY	36	AB7635	ST MOD TRACK JACKET	56	AB7954	FLAG ARMY JERSEY	68	AB9586	45 SST TEE	62
AB7470	K.O.N.Y COACH JKT	38	AB7638	ST MOD PADDED PARKA	57	AB7956	AS PREMIUM HOODY	71	AB9589	SNAKE BODY TEE	61
AB7472	90S DFB TT	39	AB7670	SST BOMBER	41	AB7965	PREMIUM MOCK ZIP	71	AB9590	SNAKE BODY TEE	61
AB7473	K.O.N.Y TEE	35	AB7671	SST BOMBER CAMO	41	AB7966	DUSK 2 DARKNESS AOP CREW	70	AB9599	STAN SMITH GRAPHIC TEE	43
AB7476	K TREFOIL TEE	36	AB7673	FULL ZIP CASUAL SST	40	AB7986	AS PREMIUM BUTTON UP	70	AB9602	SNAKE LABEL TEE	60
AB7478	K TREFOIL TEE	36	AB7683	TONGUE LABELS AOP SST	33	AB8015	FASHION GRAPHIC SS TEE	30	AB9603	SNAKE LABEL TEE	60
AB7479	90S DFB CREW	39	AB7684	TONGUE LABELS TEE	32	AB8050	ORIGINALS SLIM DENIM	54	AB9604	SNAKE LABEL TEE	60
AB7480	NY KAISER TT	37	AB7685	TONGUE LABELS TEE	32	AB8054	FT DENIM CREW	52	AB9605	CAMO LABEL TEE	60
AB7490	ITASCA WB	52	AB7686	TONGUE LABELS AOP TEE	32	AB8055	FT DENIM CREW	52	AB9606	CAMO LABEL TEE	60
AB7492	ITASCA WB	52	AB7687	TONGUE LABELS CREW	32	AB8057	FT DENIM SWEATPANT	53	AB9607	STREET LOGO	65
AB7502	ITASCA TT	51	AB7688	TONGUE LABELS CREW	32	AB8058	FT DENIM SWEATPANT	53	AB9686	FULL ZIP CASUAL SST	40
AB7504	ITASCA TT	51	AB7690	TONGUE LABELS HOODY	33	AB8059	FT Denim Superstar	53	AB9697	FOOTBALL JERSEY	45
AB7506	ITASCA TT	51	AB7692	TAPED LABELS SST TRACKTOP	33	AB8060	FT Denim Superstar	53	AB9704	SST CAMO TRACKTOP	40
AB7520	ITASCA CREW	51	AB7693	TAPE LABELS FITTED PANT	34	AB8062	5 POCKET PANT	54	AB9705	SST CAMO TRACKTOP	40
AB7522	ITASCA CREW	51	AB7695	SLIM LABELS SWEATPANT	34	AB8063	5 POCKET PANT	54	AB9706	SST CAMO TRACKTOP	40
AB7562	PE SWEATPANT	59	AB7696	TONGUE LABELS VARISTY JACKET	34	AB8300	open hem TP(S1525M397)	51	AB9715	SST TT	39
AB7563	PE SWEATPANT	59	AB7780	cuffed cargo pants AOP	49	AB8301	open hem TP(S1525M397)	51	AB9716	SST TT	39
AB7564	PE SWEATPANT	59	AB7790	cuffed cargo pants	48	AB8368	OVERSIZED STREET HOODY AOP	46	AB9717	SST TT	39
AB7565	PE SWEATPANT	59	AB7791	cuffed cargo pants	48	AB8369	ACTION SPORTS HOODED TRACK JACKET	72	AC0485	Label Sweat hoody	34
AB7566	PE CREW	58	AB7793	CUFFED WOVEN CHILL	48				AC0486	Label Sweat hoody	34
AB7567	PE CREW	58	AB7794	CUFFED WOVEN CHILL	48	AB8370	ACTION SPORTS HOODED TRACK JACKET	72	AC0510	5 PANEL CAP WHITE	121
AB7568	PE CREW	58	AB7795	STRM65	67				AC1789	Originals Girl tee	62
AB7569	PE HOODY	58	AB7799	PADDED WOOL VARSITY	42	AB8371	ACTION SPORTS TRACK JACKET	72	AC1813	BACKPACK BLACK	135
AB7571	PE HOODY	58	AB7800	PADDED WOOL VARSITY	42	AB9491	STAN SHORTS	44	AC2101	STAN SST JKT	44
AB7576	PE TEE	58	AB7809	STREET COACH JKT CAMO	50	AB9536	TREFOIL FILL T	60	AF4388	VERITAS	102
AB7578	PE TEE	58	AB7811	STREET COACH JKT	50	AB9537	TREFOIL FILL T	60	AF4389	VERITAS	102
AB7579	PE TEE	58	AB7813	BRION tracktop SNAKE	47	AB9538	TREFOIL FILL T	60	AF4390	VERITAS	103
AB7580	SPO SWEAT PANT	59	AB7816	STREET SST CAMO	47	AB9540	MULTI WAVE TEE	62	AF4391	VERITAS	103
AB7581	SPO SWEAT PANT	59	AB7817	STREET SST SNAKE	47	AB9541	MULTI WAVE TEE	62	AF4392	VERITAS	103
AB7582	SPO SWEAT PANT	59	AB7820	LOW CROTCH SWEATPANTS	48	AB9555	COURT TREFOIL T	61	AF4393	VERITAS	103
AB7586	SPO FZ	59	AB7821	LOW CROTCH SWEATPANTS	48	AB9556	COURT TREFOIL T	61	AF4595	ZX FLUX CRIB	118
AB7587	SPO FZ	59	AB7836	OVERSIZED STREET HOODY	46	AB9557	COURT TREFOIL T	61	AF4596	ZX FLUX CRIB	118
AB7588	SPO FZ	59	AB7839	STREET POCKET TEE	45	AB9558	VIBRANT CITY TEE	61	AF6261	ZX FLUX I	114
AB7610	PONCHO WINDBREAKER	57	AB7840	STREET POCKET TEE	45	AB9559	VIBRANT CITY TEE	61	AF6262	ZX FLUX K	108

Index	Name	Page	Index	Name	Page	Index	Name	Page	Index	Name	Page
AF6289	TUBULAR RUNNER WEAVE	96	AH9792	RETRO CATALOG TEE	63	B25598	TUBULAR RUNNER WEAVE	96	D68872	SEELEY	104
AF6315	ZX FLUX	93	AH9902	COBRAH TEE	69	B25599	FORUM MID SNAKE EL I	117	D68873	SEELEY	104
AF6316	ZX FLUX	93	AH9911	COBRAH HOODIE	71	B25600	ZX 500 OG W	84	D68874	SEELEY NBA	106
AF6317	ZX FLUX	93	B24101	STAN SMITH CRIB	118	B25601	ZX 500 OG W	84	D68884	SEELEY MID	104
AF6318	ZX FLUX	93	B24534	STAN SMITH CF	98	B25637	ZX FLUX K	109	D68885	SEELEY MID	104
AF6319	ZX FLUX	93	B24535	STAN SMITH CF	98	B25638	ZX FLUX K	109	D68890	ADI-EASE	106
AF6320	ZX FLUX	93	B24549	STAN SMITH VULC	99	B25639	ZX FLUX K	109	D68893	ADI-EASE	105
AF6323	ZX FLUX	91	B24550	STAN SMITH VULC	99	B25642	ZX FLUX K	109	D68895	ADI-EASE	105
AF6324	ZX FLUX	91	B24606	STAN SMITH VULC J	111	B25643	ZX FLUX K	109	D68898	ADI-EASE	105
AF6325	ZX FLUX	91	B24607	STAN SMITH VULC J	112	B25644	ZX FLUX EL I	114	D68899	ADI-EASE	105
AF6326	ZX FLUX	92	B24608	STAN SMITH VULC J	112	B25645	ZX FLUX EL I	114	D69227	SEELEY WOVEN	104
AF6327	ZX FLUX	92	B24613	STAN SMITH VULC CF I	116	B25646	ZX FLUX EL I	114	D69228	SEELEY WOVEN	104
AF6328	ZX FLUX	92	B24704	STAN SMITH	97	B25649	ZX FLUX EL I	114	D69231	ADICOURT STRIPES	106
AF6329	ZX FLUX	92	B24706	STAN SMITH	97	B25650	ZX FLUX EL I	114	D69356	COPA SKATE WOVEN	106
AF6330	ZX FLUX	92	B24710	STAN SMITH	97	B25732	SUPERSTAR GRAPHIC K	108	M19648	TUBULAR RUNNER	95
AF6331	ZX FLUX	92	B24711	STAN SMITH	97	B25737	SUPERSTAR ODDITY K	108	M19838	ZX FLUX	90
AF6343	ZX FLUX	90	B24712	STAN SMITH	97	B25739	SUPERSTAR SNAKE K	108	M19840	ZX FLUX	90
AF6344	ZX FLUX	90	B24713	STAN SMITH	98	B32703	STAN SMITH J	111	M19841	ZX FLUX	90
AF6345	ZX FLUX	90	B24715	STAN SMITH	98	B32704	STAN SMITH CF I	116	M20324	STAN SMITH	97
AF6350	ZX FLUX NPS UPDT	94	B24718	ZX FLUX MILLENIUM FALCON K	109	B32706	STAN SMITH CF C	113	M20325	STAN SMITH	97
AF6351	ZX FLUX NPS UPDT	94	B24719	ZX FLUX MILLENIUM FALCON EL I	115	B35198	GAZELLE OG	99	M20327	STAN SMITH	97
AF6352	ZX FLUX NPS UPDT	94	B24720	STAN SMITH AT-AT J	112	B35269	FORUM LO RS	101	M20586	Porsche Typ 64 2.0	107
AF6388	ZX FLUX TECHFIT	94	B24725	STAN SMITH AT-AT CF I	116	B35270	FORUM LO RS	101	M20587	Porsche Typ 64 2.0	107
AF6389	ZX FLUX TECHFIT	94	B24828	ZX 5000 RSPN	96	B35271	FORUM MID RS	101	M20604	STAN SMITH J	111
AF6390	ZX FLUX	91	B24830	ZX 5000 RSPN	96	B35272	FORUM MID RS	101	M20605	STAN SMITH J	111
AF6403	ZX FLUX	90	B24904	ZX FLUX	91	B35273	FORUM MID RS	101	M20606	STAN SMITH CF C	113
AF6404	ZX FLUX	90	B24932	ZX FLUX TECHFIT	94	B35310	ZX FLUX W	80	M20607	STAN SMITH CF C	113
AH5751	DOWN PARKA	67	B24934	ZX FLUX TECHFIT	94	B35313	ZX FLUX W	80	M20609	STAN SMITH CF I	116
AH5754	HALFZIP HOODED WINDBREAKER	49	B24972	GAZELLE INDOOR	100	B35314	ZX FLUX W	80	M20626	Porsche 356	107
AH5757	HALFZIP HOODED WINDBREAKER CAMO	50	B24974	GAZELLE INDOOR	100	B35317	ZX FLUX W	81	M20628	Porsche 356	107
AH5758	DOWN SST	42	B24975	GAZELLE INDOOR	100	B35318	ZX FLUX W	81	M20716	TOP TEN HI	100
AH5760	STREET POCKET TEE	45	B24976	GAZELLE INDOOR	100	B35338	TOP TEN HI W	87	M21295	ZX FLUX K	108
AH8954	BIG LOGO TEE SNAKE	10	B24983	GAZELLE OG	99	B35339	TOP TEN HI W	87	M21300	ZX FLUX I	114
AH9083	STREET LOGO SWEATPANT	66	B25087	TUBULAR RUNNER W	83	B35342	M ATTITUDE W	87	M25303	TOP TEN HI I	117
AH9084	STREET LOGO SWEATPANT	66	B25089	TUBULAR RUNNER W	83	B35343	M ATTITUDE W	87	S77295	GAZELLE OG	99
AH9085	FLORAL LABEL TEE	64	B25509	TOP TEN HI I	117	B35367	TOP TEN HI	101	S77312	ZX FLUX W	81
AH9086	FLORAL LABEL TEE	64	B25531	TUBULAR RUNNER	95	B35368	TOP TEN HI	101	S77313	ZX FLUX W	81
AH9087	FLORAL LABEL TEE	64	B25532	TUBULAR RUNNER	95	B35371	ZX FLUX DECON W	81	S77321	ZX 500 OG W	84
AH9088	MULTI COLOR TEE	64	B25533	TUBULAR K	110	B35372	ZX FLUX DECON W	81	S77406	SUPERSTAR RIZE W	80
AH9088	MULTI COLOR TEE	64	B25548	TUBULAR I	115	B35442	STAN SMITH W	84	S77408	SUPERSTAR RIZE W	79
AH9742	SERRATED GRAPHIC HOODY	66	B25574	ZX FLUX NPS UPDT ODDITY CF I	115	B35443	STAN SMITH W	84	S77411	Superstar W	80
AH9743	SERRATED GRAPHIC HOODY	66	B25585	ZX 500 ODDITY K	110	C75611	ADI-EASE	105	S77449	STAN SMITH VULC	99
AH9787	TOWN TEE	63	B25586	ZX 500 ODDITY CF I	115	C76945	SKATE COPA	106	S77450	STAN SMITH VULC	99
AH9788	TOWN TEE	63	B25596	TUBULAR RUNNER WEAVE	96	D65161	TOP TEN HI	100	S77478	TUBULAR K	110
AH9791	RETRO CATALOG TEE	63	B25597	TUBULAR RUNNER WEAVE	96	D68866	SEELEY	103	S77683	STAN SMITH	98

Index	Name	Page	Index	Name	Page
S77684	STAN SMITH	98	S82652	TUBULAR RUNNER WEAVE	95
S77720	ZX FLUX	91	S82695	ZX FLUX K	110
S77765	SUPERSTAR BECKENBAUER PACK	87	S82702	STAN SMITH CF J	111
S77766	SUPERSTAR BECKENBAUER PACK	87	S82703	STAN SMITH CF J	111
S77853	SUPERSTAR WEAVE PACK	88	S82714	SUPERSTAR 360 I	113
S77854	SUPERSTAR WEAVE PACK	88	S82715	SUPERSTAR 360 I	113
S77872	GAZELLE OG W	86	S82718	ZX FLUX NPS UPDT ODDITY K	110
S78325	SUPERSTAR WEAVE PACK	88	S82729	SUPERSTAR SNAKE PACK	88
S78326	SUPERSTAR WEAVE PACK	88	S82731	SUPERSTAR SNAKE PACK	88
S78327	SUPERSTAR WEAVE PACK	88	S82757	SUPERSTAR ODDITY PACK	89
S81229	STAN SMITH W	85	S82758	SUPERSTAR ODDITY PACK	89
S81230	STAN SMITH W	85	S82813	Porsche Typ64 Sport	107
S81231	STAN SMITH W	85	S82858	VERITAS MID K	112
S81232	STAN SMITH W	85	S82860	VERITAS MID K	112
S81261	TUBULAR RUNNER W	83	S82861	VERITAS MID K	113
S81262	TUBULAR RUNNER W	83	S82862	VERITAS MID K	113
S81268	TUBULAR RUNNER W	83	S82873	VERITAS MID I	116
S81269	TUBULAR RUNNER W	83	S82875	VERITAS MID I	117
S81320	ZX FLUX LACE W	82	S82876	VERITAS MID I	117
S81321	ZX FLUX LACE W	82	S82884	ZX FLUX SMOOTH W	82
S81322	ZX FLUX LACE W	82	S82885	ZX FLUX SMOOTH W	82
S81335	GAZELLE OG W	86	S82886	ZX FLUX SMOOTH W	82
S81336	GAZELLE OG W	86	S82936	ZX FLUX SMOOTH W	82
S81350	Superstar UP Strap W	79	S82937	ZX FLUX SMOOTH W	82
S81351	Superstar UP Strap W	79	S83141	TUBULAR RUNNER	95
S81372	MISS STAN W	86			
S81374	MISS STAN W	86			
S81377	SUPERSTAR UP W	79			
S81389	STAN SMITH CF W	85			
S81390	STAN SMITH CF W	85			
S81479	TUBULAR I	115			
S81609	ZX FLUX W	131			
S81612	STAN SMITH VULC CF I	116			
S81613	STAN SMITH VULC J	111			
S81616	HONEY 2.0 SlipOn W	131			
S81617	SUPERSTAR W	131			
S81618	STAN SMITH W	131			
S81619	M ATTITUDE UP	131			
S81633	FORUM LO RS	102			
S81728	SUPERSTAR SNAKE PACK	88			
S82568	SUPERSTAR RIZE W	79			
S82570	SUPERSTAR RIZE W	79			
S82614	ZX FLUX EL I	115			
S82615	ZX FLUX K	109			
S82618	STAN SMITH CRIB	118			