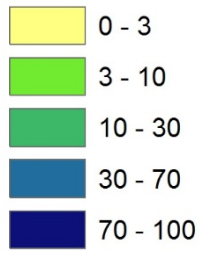
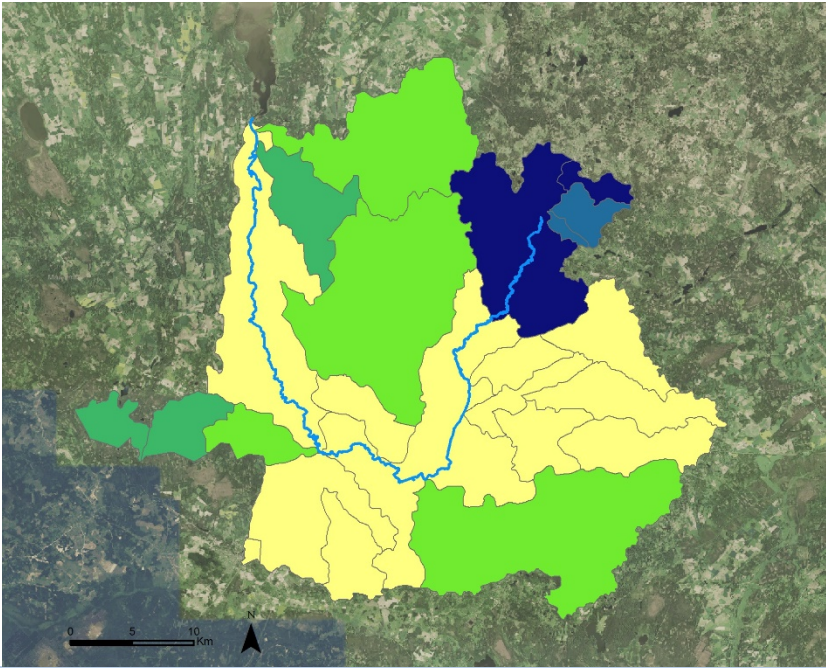
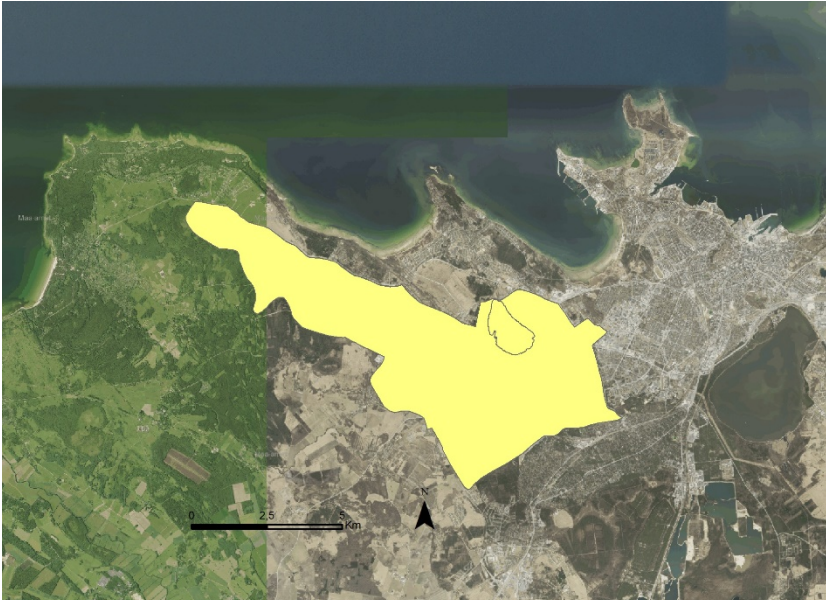


Lisa 6.2. Biofüüsilise kaardistamise tulemused

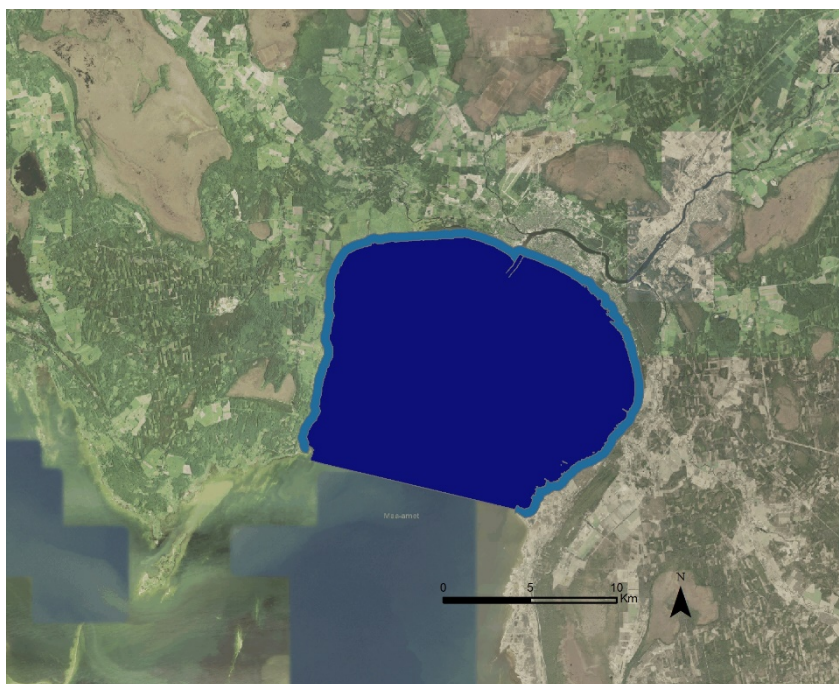
Legend kaitsealuse ala ulatuse (%)



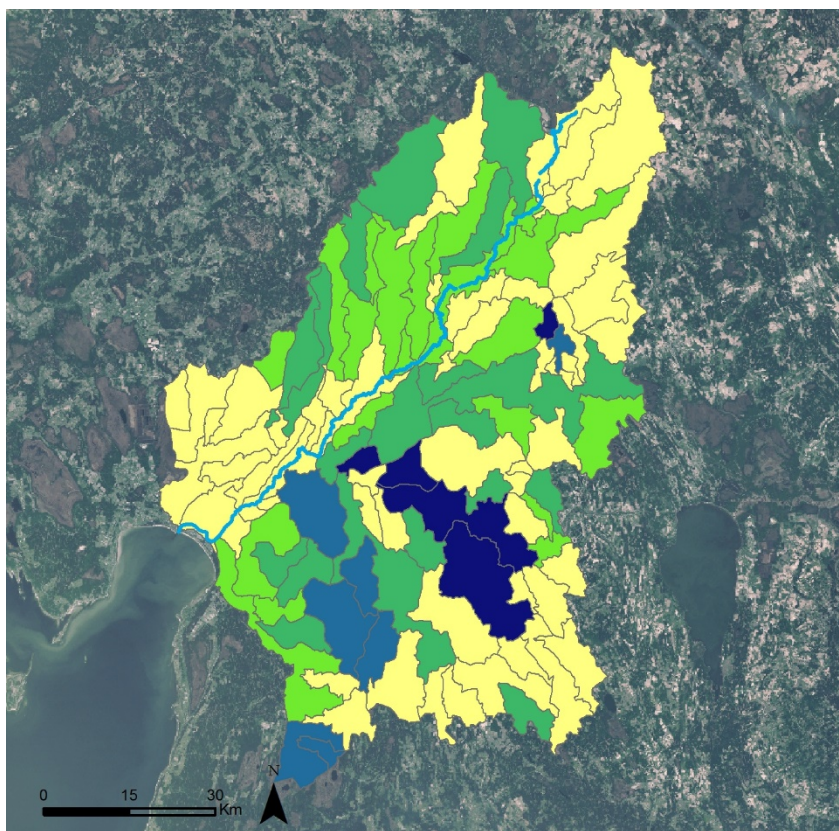
Tabel 1. Reguleeriva ökosüsteemiteenuse “elupaikade ja nende säilitamine” kaardid.

Testala	Kaardistus
Väike-Emajõgi	 <p>Aerial map of the Väike-Emajõgi catchment area. The map is overlaid with a color-coded protection level. The central and eastern parts of the catchment are colored dark blue (70-100%), while the western and southern parts are colored light green (3-10%) and yellow (0-3%). A scale bar at the bottom left indicates 0, 5, and 10 km. A north arrow is located at the bottom center.</p>
Harku järv	 <p>Aerial map of the Harku järv catchment area. The map is overlaid with a color-coded protection level. The entire catchment area is colored yellow (0-3%). A scale bar at the bottom left indicates 0, 2.5, and 5 km. A north arrow is located at the bottom center.</p>

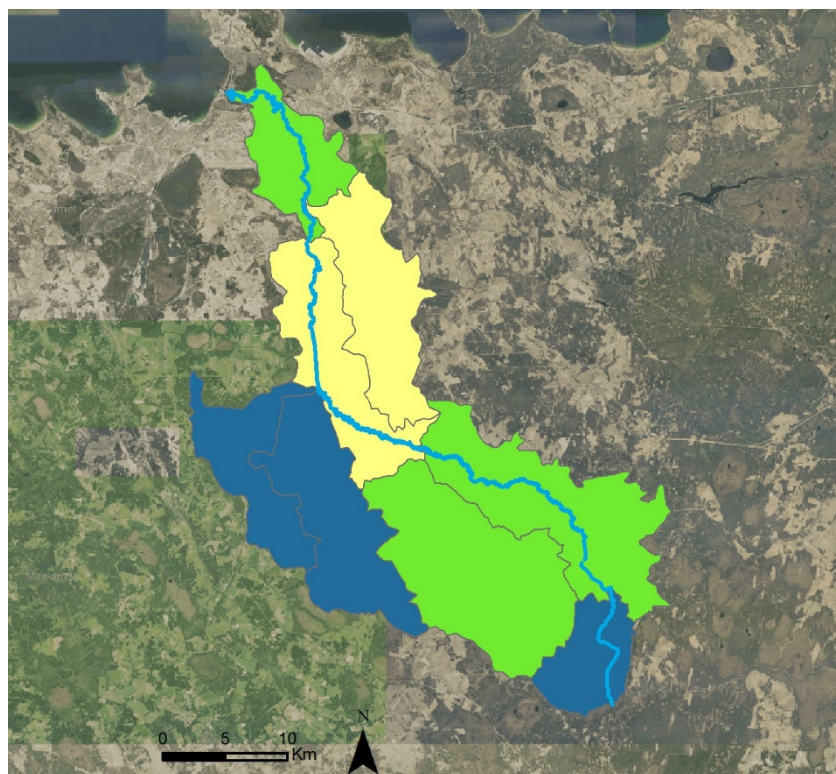
Pärnu laht



Pärnu jõgi



Pirita jõgi



Harrastuskalapüügi kaardistuse legend

- Väga hea
- Hea
- Kesine
- Halb
- Väga halb

Tabel 2. Kultuurilise ökosüsteemiteenuse "harrastuskalapüük" kaardid.

Testala	Kaardistus
Valgejärv, Konsu järv	
Harku järv	

Pühajärv

