



The sliding terrace door "Aru patio PARALLEL 60 CLASSIC" is the sliding door patio door available in parallel rails with aluminium clad finish. This is the ideal solution when maximum glass area is required. This also has an almost level threshold. Constructed from Pine, Oak or Meranti.

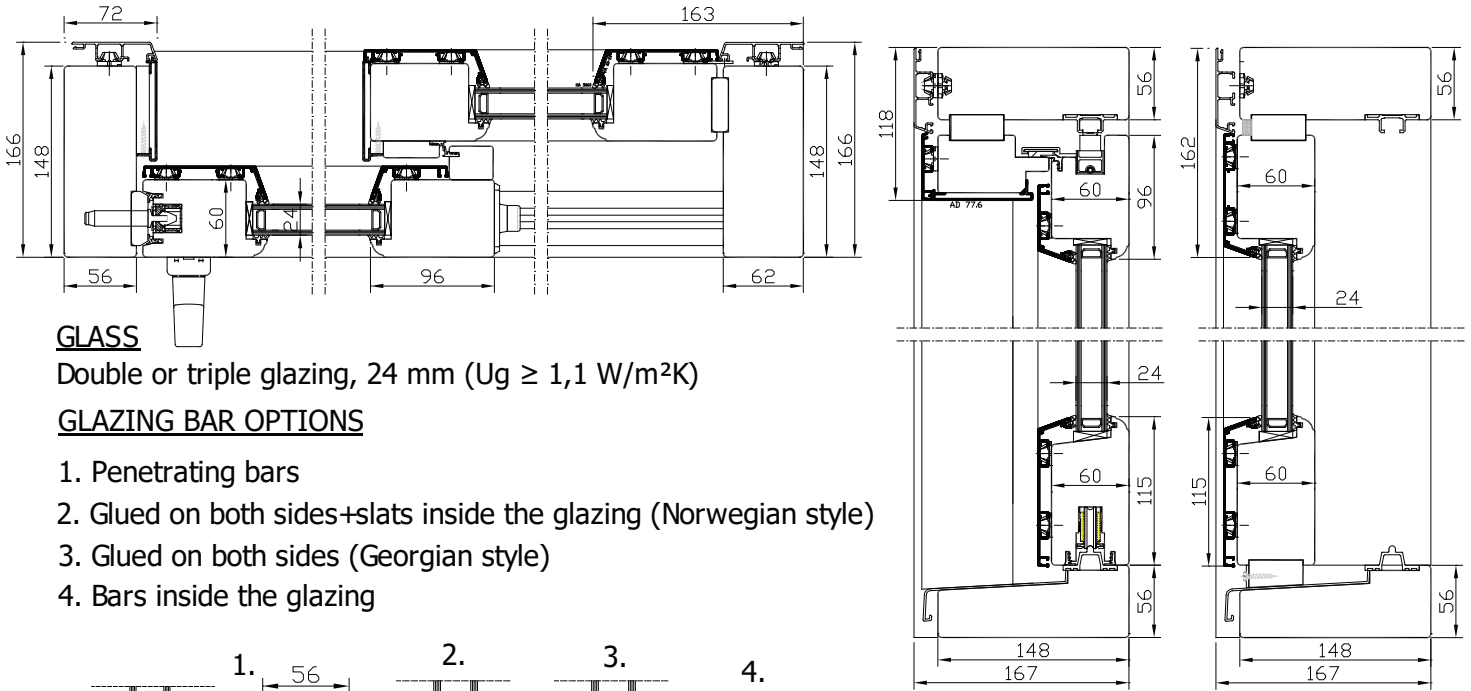


The standard solution allows the door to be locked only from the inside, but is also available to lock the door from both sides.

AruAL patio PARALLEL 60 CLASSIC



SIDE-SLIDE OPENING 2-LEVEL WOODEN TERRACE DOOR

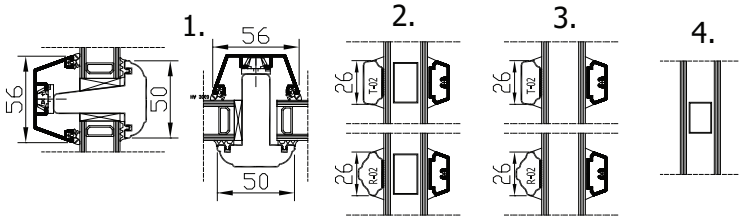


GLASS

Double or triple glazing, 24 mm ($U_g \geq 1,1 \text{ W/m}^2\text{K}$)

GLAZING BAR OPTIONS

1. Penetrating bars
2. Glued on both sides+slats inside the glazing (Norwegian style)
3. Glued on both sides (Georgian style)
4. Bars inside the glazing

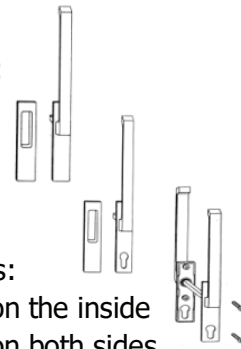


Standard - wooden threshold width alu cover
Extra - aluminium-profile threshold

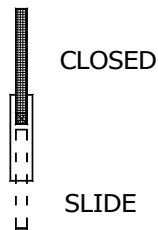
TIMBER FINISHING with water-based paint or stain

ALUMINIUM FINISHING RAL aluminium colour card

Standard handleset:
pull handle.



HANDLE POSITIONS:



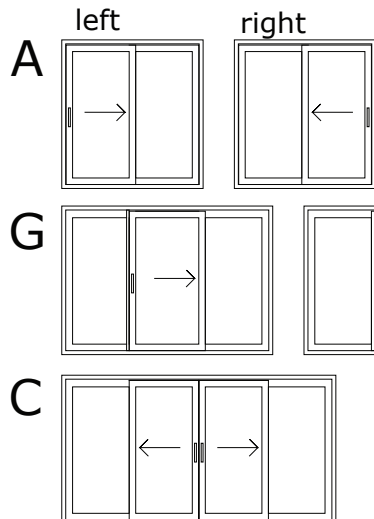
Possible additions:

1. cylinderlock on the inside
2. cylinderlock on both sides

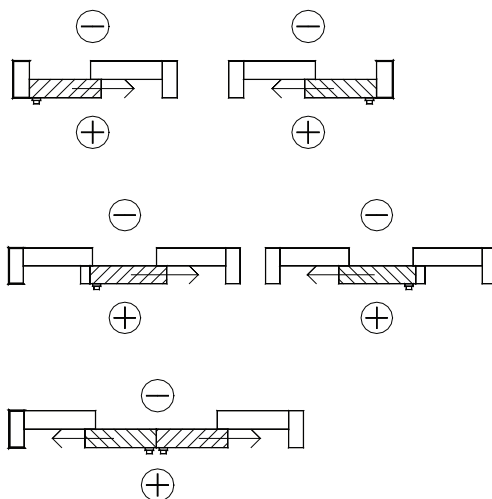
OPENING:

All views from inside.

Sash weight max 300 kg



OPENABLE PART
 FIXED PART



		<i>Dimensions (mm)</i>	
		<i>min</i>	<i>max</i>
A	width	1430	6630
	height	1990	2874
G	width	2134	9000
	height	1990	2874
C	width	2731	9000
	height	1990	2874