



“Aru AL 68 CORA IN” is a tilt & turn timber window with a 68 mm thick timber sash. On the outside, the window’s jamb and sash are both covered with aluminium profiles. The aluminium cover increases the life-span of the window and makes cleaning it simpler. The aluminium profiles are anodized or painted with RAL colours. Constructed from Pine, Oak or Meranti.



Different ventilation vents can be mounted on the windows.



The wooden parts are made of laminated timber. To reduce heat loss at the edge of the glass, we recommend using an insulated glazing that has SWS (plastic) spacers rather than the traditional metal.

# AruAL 68 CORA IN

## INWARD OPENING TILT&TURN WOODEN-ALUMINIUM WINDOW

### PROFILE IV68

Jamb: 68x78 mm

Frame: 68x78 mm

Inside groove for windowcill 6x30mm

outside groove for aluminium cill 12x30 mm

### FURNITUR

Fittings: ROTO NT

Handle: ROTO, HOPPE



### GLASS

24 mm double glazed units ( $U_g \geq 1,1W/m^2K$ )

Glazing from the inside with wooden glazing bead

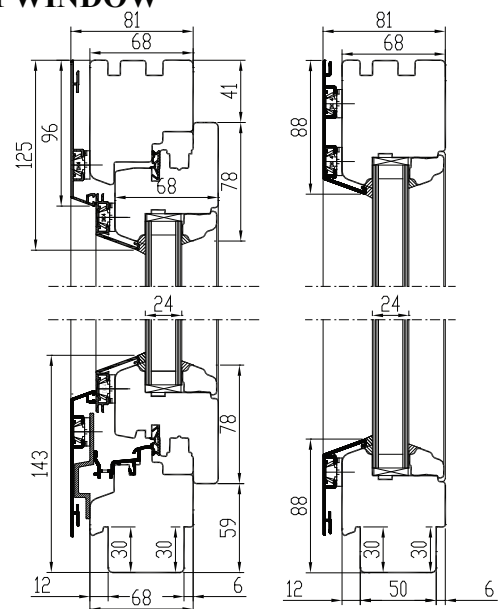
Fastened with hidden nails, sealed with silicone

### SEAL

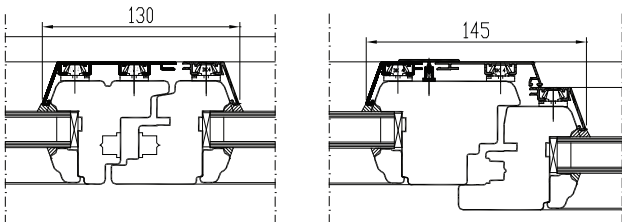
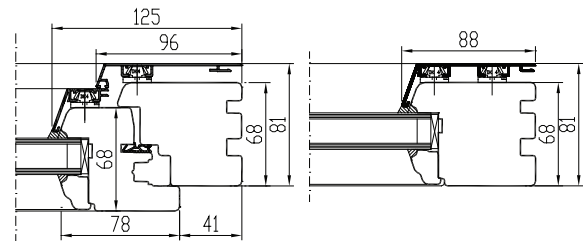
2-chamber seal surrounding middle frame rebate

TIMBER FINISHING with water-based paint or stain

ALUMINIUM FINISHING RAL aluminium colour range

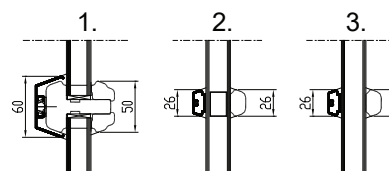


fixed window

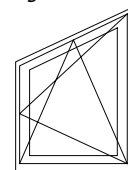


### GLAZING BAR OPTIONS

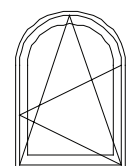
1. Penetrating bars
2. Taped bars Norwegian style
3. Taped bars Georgian style



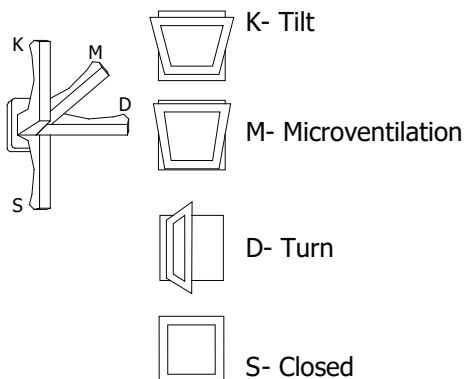
Triangular window



Round-headed window



Handle positions:



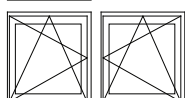
### OPENING

Inside view



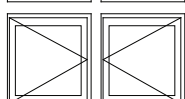
F - FIXED

min measures 330 x 330 mm



DK - TILT AND TURN (LEFT / RIGHT)

min max L=410...1710 mm H=420...2527 mm, weight max 130 kg



D - SIDEHUNG (LEFT / RIGHT)

min max L=410...1710 mm H=420...2527 mm, weight max 130 kg



KIPP - TOPHUNG (Handle above)

weight max 80 kg

NB! Maximum and minimum dimensions and opening possibilities also depend on the aspect ratio. Please ask our specialists for additional information.